

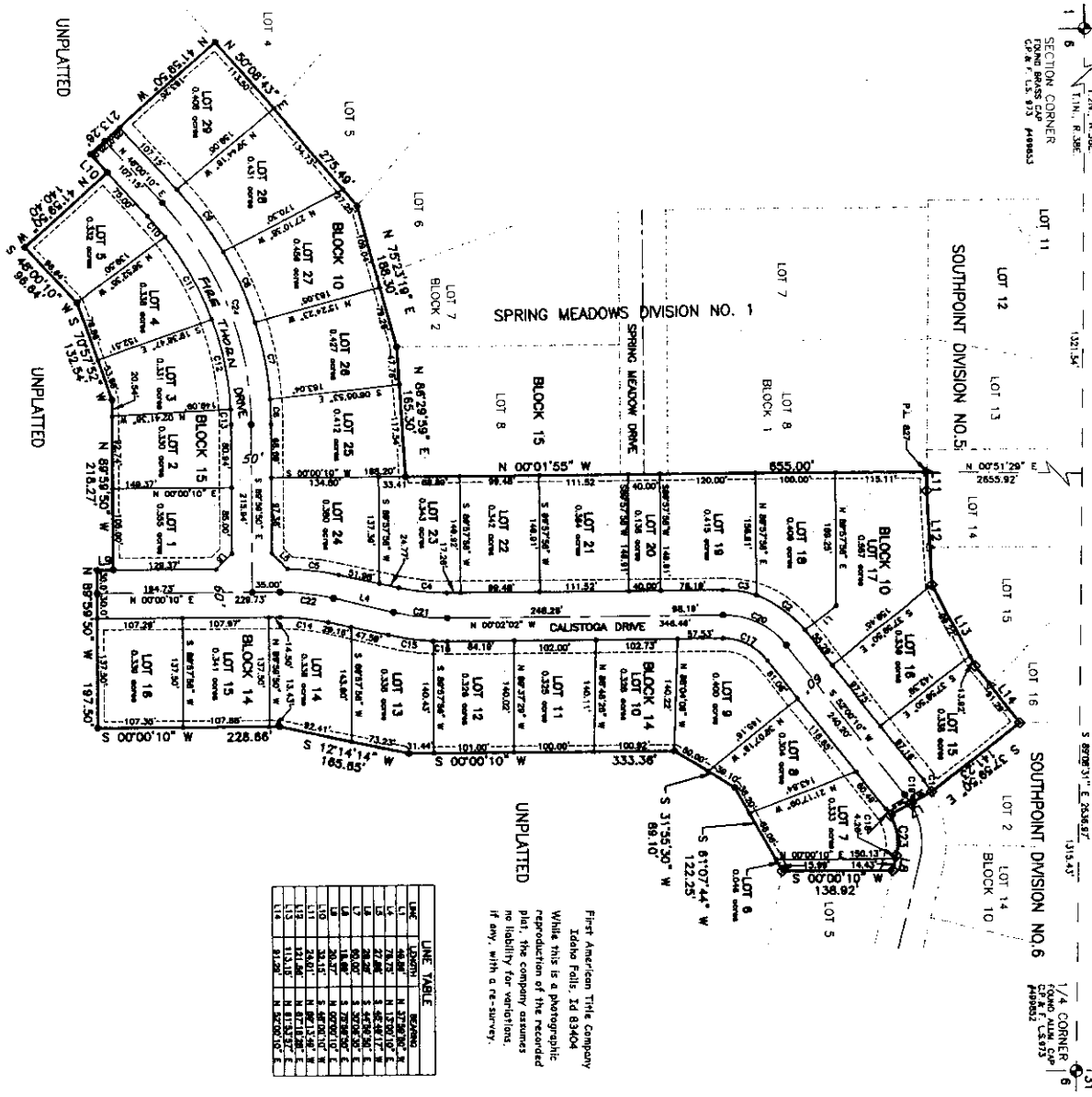
# SOUTHPOINT DIVISION NO. 2

AN ADDITION TO THE CITY OF IDAHO FALLS  
BEING A PORTION OF THE SW 1/4 AND THE NW 1/4 OF SECTION 6,  
T.1N., R.38E., B.M.,  
IDAHO FALLS, BONNEVILLE COUNTY, IDAHO

SECTION CORNER  
FOUND BRASS CAP  
C.P.M. U.S. 933 ADDRESS

1/4 CORNER  
FOUND ALUM. CAP  
C.P.M. U.S. 933 ADDRESS

(BASIS OF BEARING, P.W.E.-2004 CITY OF IDAHO FALLS DATA)  
49TH SOUTH (TOWNSHIP ROAD)  
S 87°51' E, 258.87'



UNPLATTED

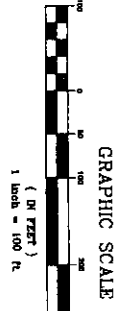
First American Title Company  
Idaho Falls, ID 83404

While this is a photographic reproduction of the recorded plat, the company assumes no liability for variations, if any, with a re-survey.

LINE	LENGTH	BEARING
1	130.00	N 120°00'00" E
2	228.86	S 87°59'50" W
3	197.50	N 197°50'00" E
4	10.10	S 00°00'00" W
5	10.10	N 00°00'00" E
6	10.10	S 00°00'00" W
7	10.10	N 00°00'00" E
8	10.10	S 00°00'00" W
9	10.10	N 00°00'00" E
10	10.10	S 00°00'00" W
11	10.10	N 00°00'00" E
12	10.10	S 00°00'00" W
13	10.10	N 00°00'00" E
14	10.10	S 00°00'00" W
15	10.10	N 00°00'00" E
16	10.10	S 00°00'00" W
17	10.10	N 00°00'00" E
18	10.10	S 00°00'00" W
19	10.10	N 00°00'00" E
20	10.10	S 00°00'00" W
21	10.10	N 00°00'00" E
22	10.10	S 00°00'00" W
23	10.10	N 00°00'00" E
24	10.10	S 00°00'00" W
25	10.10	N 00°00'00" E
26	10.10	S 00°00'00" W
27	10.10	N 00°00'00" E
28	10.10	S 00°00'00" W
29	10.10	N 00°00'00" E

Curve	Radius	Delta	Chord Bearing	Chord Distance
C1	130.00'	72°31'15"	N 120°00'00" E	130.00'
C2	130.00'	72°31'15"	S 87°59'50" W	130.00'
C3	130.00'	72°31'15"	N 197°50'00" E	130.00'
C4	130.00'	72°31'15"	S 00°00'00" W	10.10'
C5	130.00'	72°31'15"	N 00°00'00" E	10.10'
C6	130.00'	72°31'15"	S 00°00'00" W	10.10'
C7	130.00'	72°31'15"	N 00°00'00" E	10.10'
C8	130.00'	72°31'15"	S 00°00'00" W	10.10'
C9	130.00'	72°31'15"	N 00°00'00" E	10.10'
C10	130.00'	72°31'15"	S 00°00'00" W	10.10'
C11	130.00'	72°31'15"	N 00°00'00" E	10.10'
C12	130.00'	72°31'15"	S 00°00'00" W	10.10'
C13	130.00'	72°31'15"	N 00°00'00" E	10.10'
C14	130.00'	72°31'15"	S 00°00'00" W	10.10'
C15	130.00'	72°31'15"	N 00°00'00" E	10.10'
C16	130.00'	72°31'15"	S 00°00'00" W	10.10'
C17	130.00'	72°31'15"	N 00°00'00" E	10.10'
C18	130.00'	72°31'15"	S 00°00'00" W	10.10'
C19	130.00'	72°31'15"	N 00°00'00" E	10.10'
C20	130.00'	72°31'15"	S 00°00'00" W	10.10'
C21	130.00'	72°31'15"	N 00°00'00" E	10.10'
C22	130.00'	72°31'15"	S 00°00'00" W	10.10'
C23	130.00'	72°31'15"	N 00°00'00" E	10.10'
C24	130.00'	72°31'15"	S 00°00'00" W	10.10'

- NOTES**
1. UNLESS OTHERWISE SHOWN, A PERCENT (10) FOOT WIDE PUBLIC UTILITY EASEMENT IS HEREBY RESERVED WITHIN THE BOUNDARIES OF ALL LOTS AND BLOCKS AND WITHIN THE BOUNDARIES OF ALL STRIPS OF LAND AND THE ROAD LOTS AND ALLEYS. THE EASEMENT SHALL BE LOCATED IN ACCORDANCE WITH THE CONSTRUCTION OF HALF-SERVICED DIVISIONS AND ALLEYS TO EACH LOT.
  2. LOT 6, BLOCK 14 IS A OPEN SPACE LOT, RESERVED FOR HOMEOWNERS RECREATIONAL ACCESS, UNDEVELOPED, AND PUBLIC UTILITIES. THESE LOTS ARE TO BE OWNED AND MAINTAINED BY THE SOUTHPOINT SUBDIVISION HOMEOWNERS ASSOCIATION.
  3. THE CITY OF IDAHO FALLS WILL NOT MAINTAIN ROADS UNTIL CONSTRUCTION TO CITY OF IDAHO FALLS STANDARDS AND SPECIFICATIONS ARE MET.
  4. LOT 20 WILL BE MAINTAINED BY THE HOMEOWNERS ASSOCIATION (HOA). THE PURPOSE AND USE OF LOT 20, BLOCK 10 SHALL BE FOR EQUESTRIAN, RECREATION AND SPECIAL INTERESTS ONLY.



- LEGEND**
- Boundary Line
  - Right-of-Way Line
  - Centerline
  - Curved Line
  - Original Line
  - Set 5/8"x30" iron rod with aluminum cap stamped L.S. 4563
  - Set 1/2"x24" iron rod with plastic cap stamped L.S. 4563
  - Found 5/8" iron rod with plastic cap stamped L.S. 10786
  - Found 1/2" iron rod with plastic cap stamped L.S. 10786
  - Found Brass Cap or Aluminum Cap (as indicated)
  - Public Utility Easement