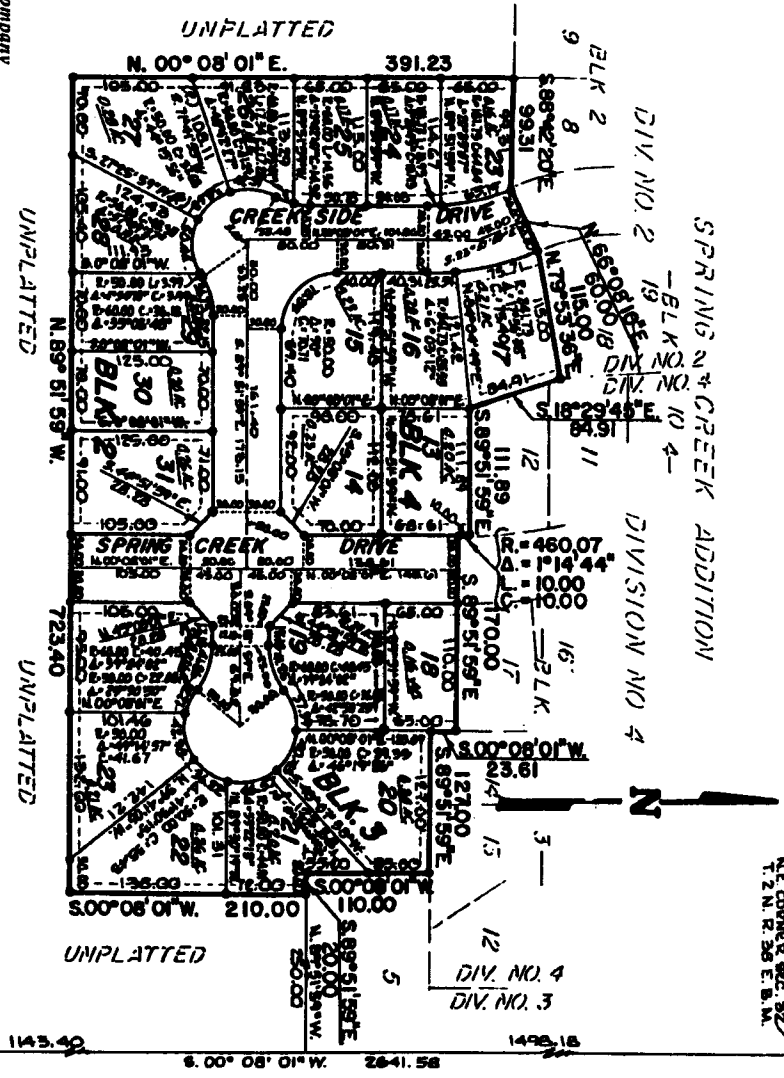


SPRING CREEK ADDITION

DIVISION NO. 7

AN ADDITION TO THE CITY OF IDAHO FALLS, BONNEVILLE COUNTY, IDAHO
BEING PART OF THE N.E. 1/4 OF SECTION 32 T. 2 N. R. 38 E. B.M.



First American Title Company
 Idaho Falls, Idaho 83404
 This sketch is made solely for the purpose of assisting in locating the premises. The company assumes no liability for all aged loss or damage which may result from reliance on this map.



- NOTES**
- DENOTES IRON RODS
 - UTILITY EASEMENTS ARE 10 FT. WIDE ALONG ALL LINES UNLESS OTHERWISE NOTED

E. 1/4 CORNER SEC. 32
 T. 2 N. R. 38 E. B.M.