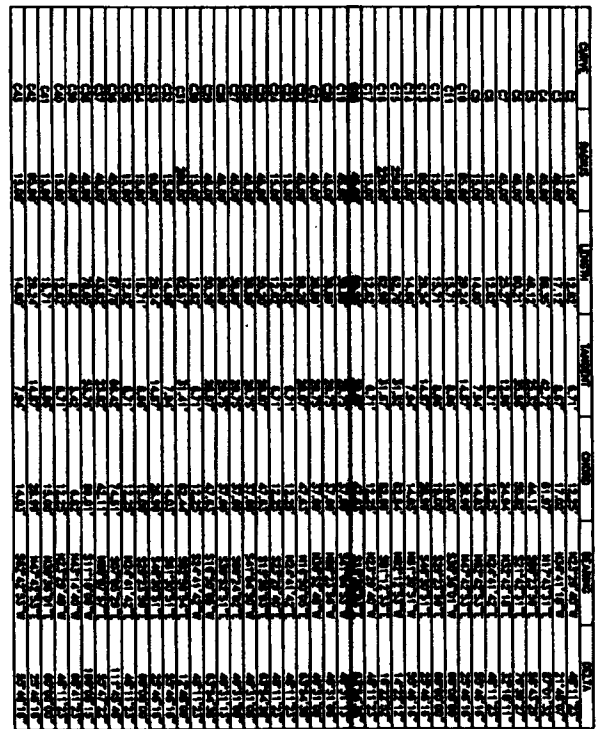
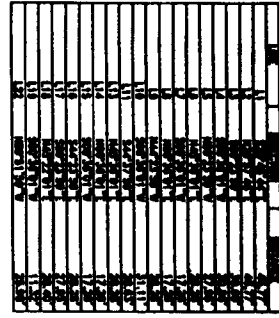


ST. CLAIR ESTATES

DIVISION NO. 2

AN ADDITION TO THE CITY OF IDAHO FALLS, BONNEVILLE COUNTY, IDAHO
PART OF THE NW 1/4, SECTION 33, T2 N., R. 38 E., B.M.



LEGEND

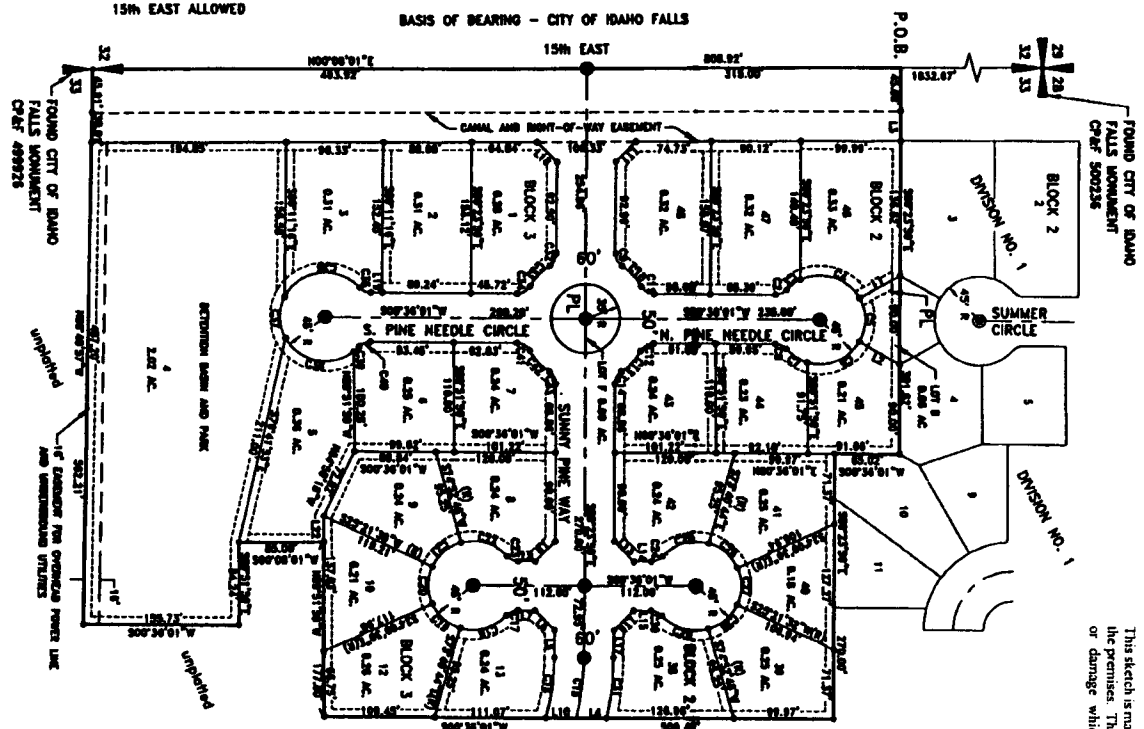
- Section control corners
- Placed 5/8" iron rod with cap marked P.L.S. 4563
- Placed 1/2" iron rod with cap marked P.L.S. 4563
- Point of beginning

Utility easements are 10' wide along the frontage of all lots. Side yard and rear yard easements are 8' unless otherwise shown.

Monument to be placed after construction. 5/8" iron rod with cap marked P.L.S. 4563

Private Landscaping Architecture
By Homeowner Association

NOTE:
NO DIRECT LOT ACCESS TO
15th EAST ALLOWED



Idaho Falls, Idaho 83404
This sketch is made solely for the purpose of assisting in locating the premises. The company assumes no liability for alleged loss or damage which may result from reliance on this map.



First American Title Company