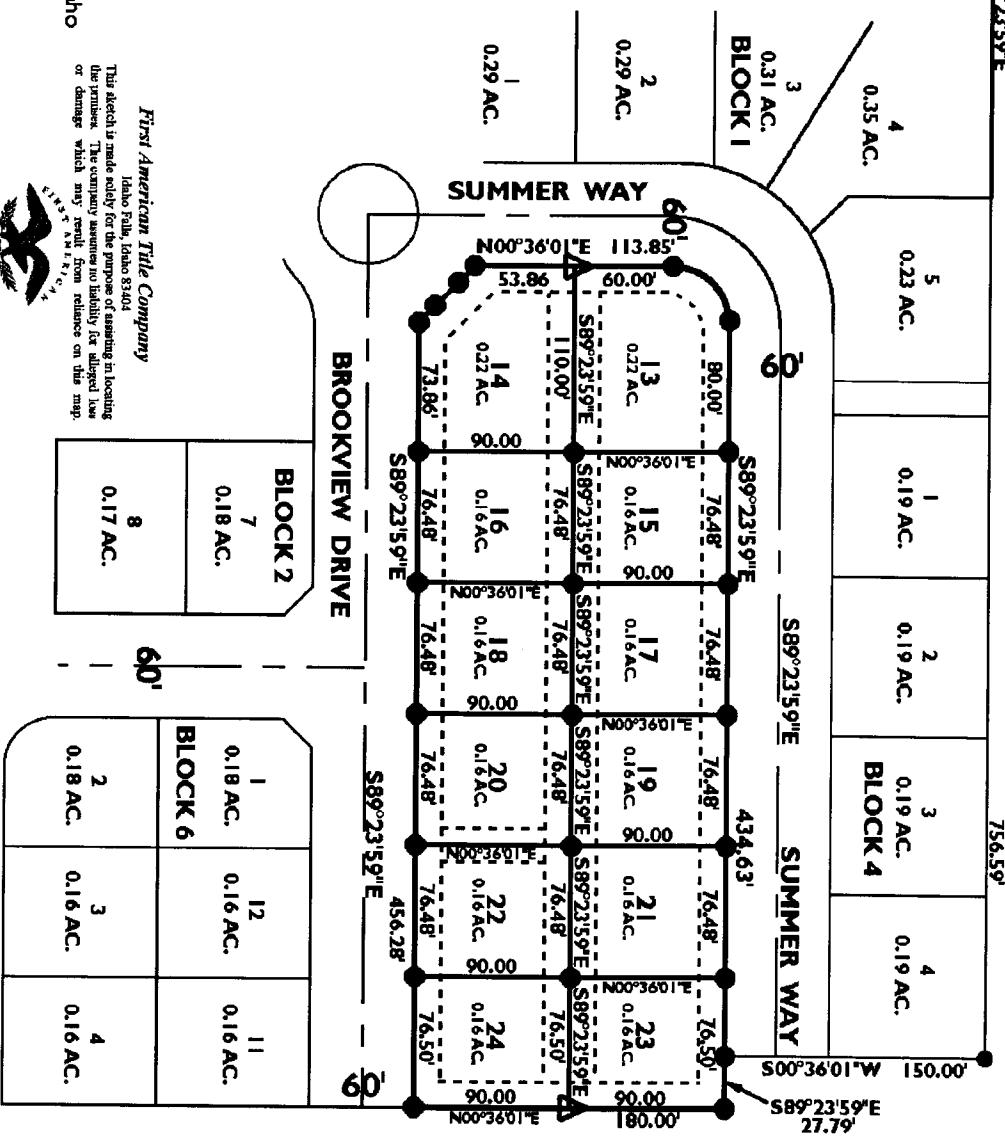


1st Amended Plat St. Clair Estates Division No. 3

BEING A REPLAT OF LOTS 1-12 BLOCK 5 OF ST. CLAIR DIVISION NO. 3
AN ADDITION TO THE CITY OF IDAHO FALLS, BONNEVILLE COUNTY, IDAHO
PART OF THE NW 1/4, SECTION 33, T.2 N., R. 38 E., B.M.

29
28
Found City of Idaho
Falls Monument
CP&F 500236

32
33
Found City of Idaho
Falls Monument
CP&F 49926



First American Title Company
Idaho Falls, Idaho 83401
This abstract is made solely for the purpose of assisting in locating the premises. The company assumes no liability for alleged loss or damage which may result from reliance on this map.



BLOCK 2	
7	0.18 AC.
8	0.17 AC.

BLOCK 6	
1	0.18 AC.
2	0.18 AC.
3	0.16 AC.
4	0.16 AC.
11	0.16 AC.
12	0.16 AC.