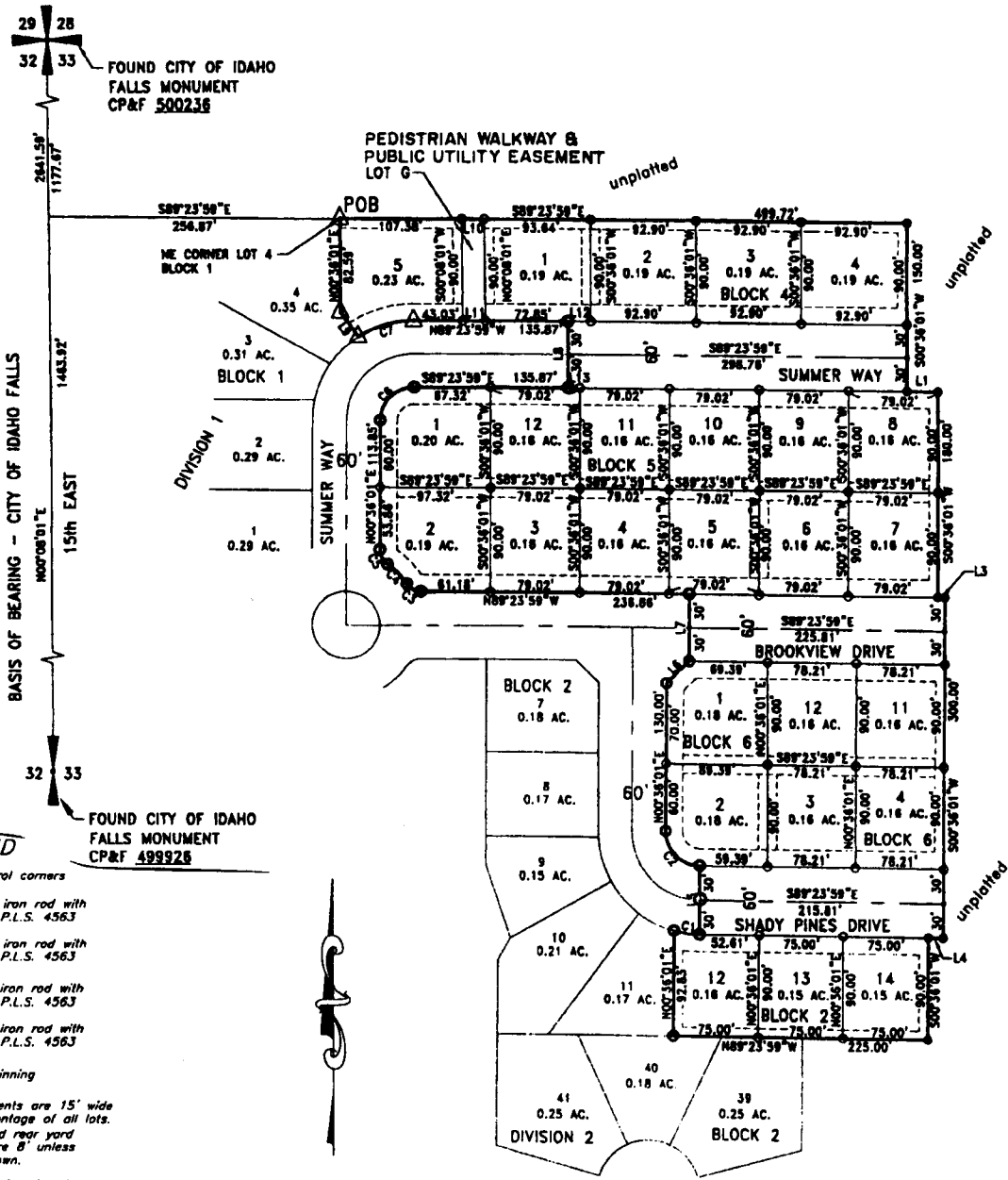


# ST. CLAIR ESTATES

## DIVISION NO. 3

AN ADDITION TO THE CITY OF IDAHO FALLS, BONNEVILLE COUNTY, IDAHO  
 PART OF THE NW 1/4, SECTION 33, T.2 N., R. 38 E., B.M.  
 AND A REPLAT OF LOT 5 BLOCK 1 DIVISION NO. 1



### LEGEND

- Section control corners
- Placed 5/8" iron rod with cap marked P.L.S. 4563
- Placed 1/2" iron rod with cap marked P.L.S. 4563
- Found 5/8" iron rod with cap marked P.L.S. 4563
- Found 1/2" iron rod with cap marked P.L.S. 4563
- POB Point of beginning
- Utility easements are 15' wide along the frontage of all lots. Side yard and rear yard easements are 'B' unless otherwise shown.
- Monument to be placed after construction. 5/8" iron rod with cap marked P.L.S. 4563

CHUNK	BOUND	LENGTH	TANGENT	CHORD	BEARING	DELTA
CL	80.00	39.81	11.37	22.57	S89°11'51" E	122°2'16"
CL	80.00	47.15	36.09	48.43	S44°23'59" W	89°59'59"
CL	15.00	15.00	17.59	14.63	S61°35'31" W	87°29'11"
CL	15.00	15.00	7.84	14.63	S27°17'07" W	89°26'10"
CL	80.00	47.15	36.09	48.43	S44°23'59" E	89°59'59"
CL	80.00	82.87	26.79	51.35	S74°01'31" W	39°59'31"

LINE	DIRECTION	DISTANCE
L1	S89°23'59" E	21.73
L2	S89°23'59" E	6.89
L3	N89°23'59" W	13.78
L4	N44°23'59" W	28.28
L5	N61°35'31" E	80.00
L6	N27°17'07" E	80.00
L7	N44°23'59" W	80.00
L8	N89°23'59" W	21.73
L9	S89°23'59" E	21.73
L10	N89°23'59" W	21.73
L11	S89°23'59" E	21.73
L12	S89°23'59" E	21.73
L13	S89°23'59" E	18.41

### First American Title Company

Idaho Falls, Idaho 83404

This sketch is made solely for the purpose of assisting in locating the premises. The company assumes no liability for alleged loss or damage which may result from reliance on this map.

