

ST. CLAIR ESTATES DIVISION NO. 6 AN ADDITION TO THE CITY OF IDAHO FALLS BONNEVILLE COUNTY, IDAHO

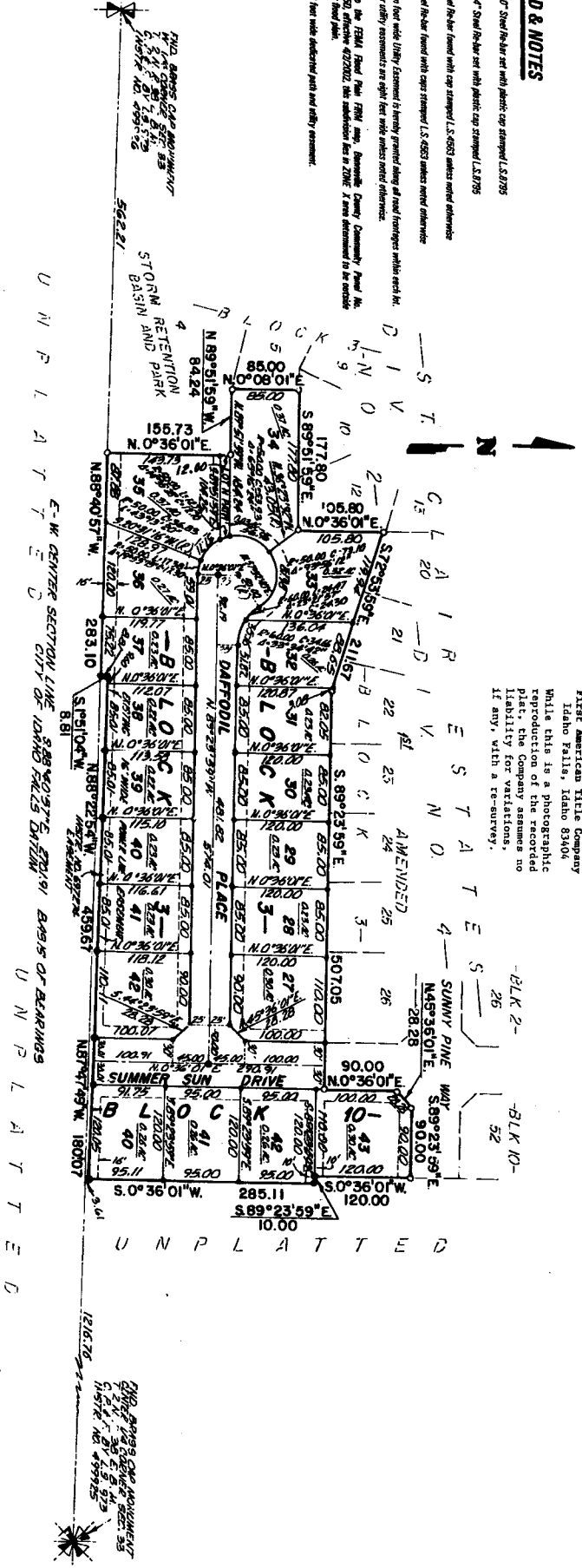
BEING A PART OF THE S. 1/2 NW 1/4 SECTION 33 T. 2 N., R. 38 E., B.M.

First American Title Company
Idaho Falls, Idaho 83404
While this is a photographic reproduction of the recorded plat, the Company assumes no liability for variations, if any, with a re-survey.

LEGEND & NOTES

- 5/8" x 3/8" Steel Rebar set with plastic cap stamped L.S.8795
- 1/2" x 3/4" Steel Rebar set with plastic cap stamped L.S.8795
- 6/8" Steel Rebar found with cap stamped L.S. 6553 unless noted otherwise
- 1/2" Steel Rebar found with cap stamped L.S. 6553 unless noted otherwise

A Review that utility Easement is hereby granted along all road frontages unless noted.
All other utility easements are right of way unless noted otherwise.
According to the FEMA Flood Plain 1704 map, Bonneville County Community Flood No. 18227/2024 effective 4/27/2022, the addition lies in Zone X area determined to be outside the 500 Year Flood Plain.
Let it be a 12 foot wide dedicated path and utility easement.



U N P L A T T E D

THIS BOUNDARY MONUMENT
IS A 12 FOOT WIDE DEDICATED
PATH AND UTILITY EASEMENT
AS SHOWN ON THE PLAT
NO. 18227/2024

THIS BOUNDARY MONUMENT
IS A 12 FOOT WIDE DEDICATED
PATH AND UTILITY EASEMENT
AS SHOWN ON THE PLAT
NO. 18227/2024