

ST. LEON INDUSTRIAL PARK

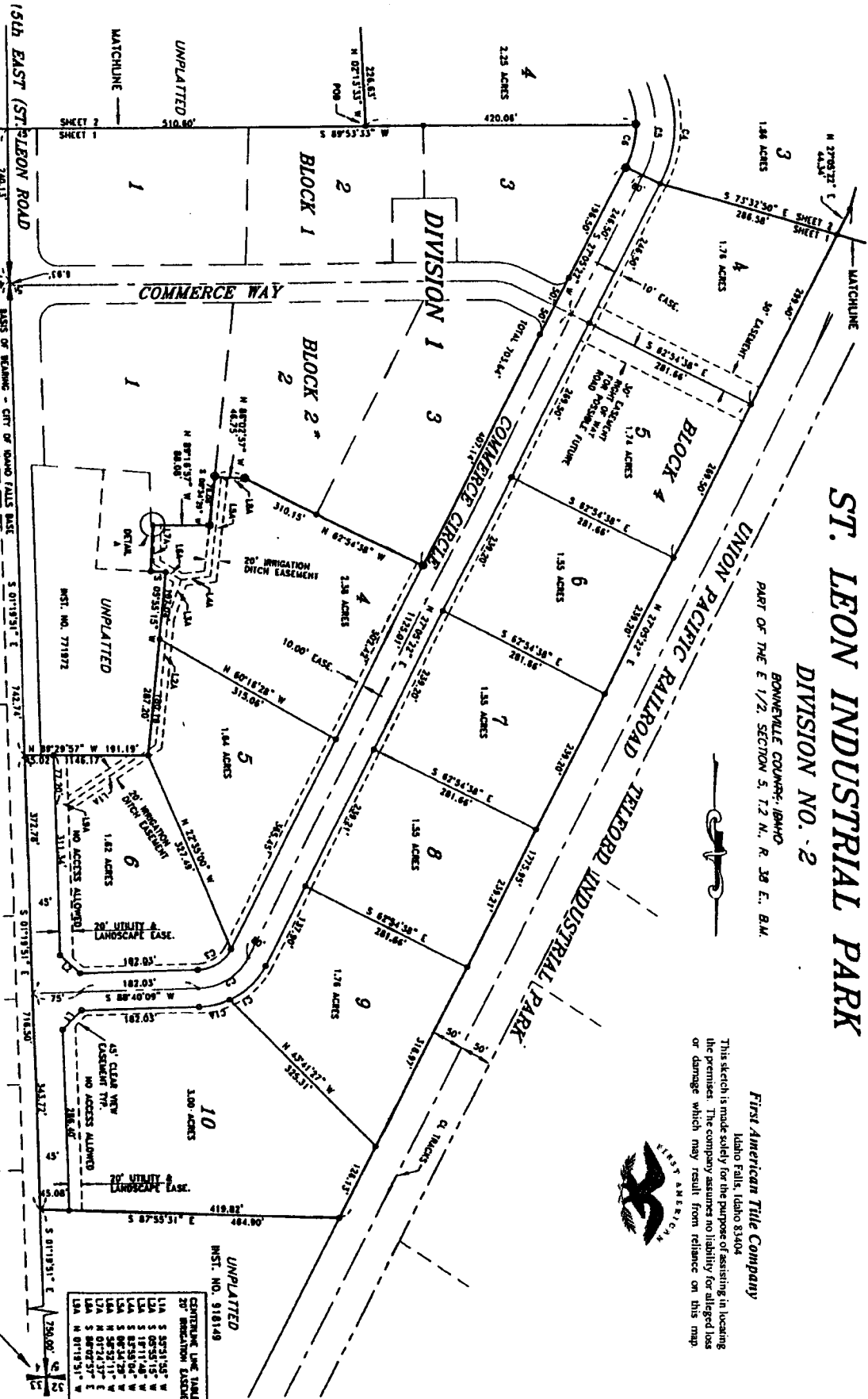
DIVISION NO. 2

BONNEVILLE COUNTY, ILLINOIS
 PART OF THE E 1/2, SECTION 5, T. 2 N., R. 30 E., B.M.

This sketch is made solely for the purpose of assisting in locating the premises. The company assumes no liability for alleged loss or damage which may result from reliance on this map.

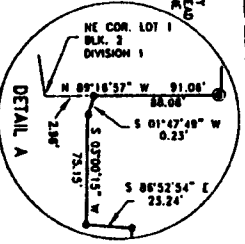


First American Title Company
 Idaho Falls, Idaho 83404



LEGEND

- Section corner
- Proposed 1/2" fire road with concrete F.I.S. (548)
- Proposed 5/8" fire road with concrete F.I.S. (548)
- Utility easements are 10' wide along the perimeter of all lots.
- Found brass cap
- Found monument
- C.P.T. INST. NO. 583383



LINE	DIRECTION	DISTANCE
1	N 43°40'00" E	41.41
2	N 43°18'31" W	42.23

CURVE	RADIUS	LENGTH	TANGENT	CHORD	BEARING	DELTA
C1	130.00'	77.72'	41.30'	74.48'	S 78°43'59" W	90°00'00"
C2	130.00'	49.25'	24.86'	46.91'	S 48°07'15" W	31°51'01"
C3	60.00'	64.49'	32.83'	51.74'	S 37°52'48" W	51°51'01"
C4	210.00'	178.12'	85.75'	172.83'	S 37°52'48" W	51°51'01"
C5	180.00'	153.10'	76.57'	147.83'	S 42°11'05" E	88°44'58"
C6	130.00'	70.12'	35.71'	64.24'	N 13°21'52" E	38°48'37"

UNPLATTED
 INST. NO. 510149

CENTRE LINE TABLE FOR
 20' IRRIGATION EASEMENT

L1A	S 82°51'02" W	184.43
L1B	S 82°51'02" W	184.43
L2A	S 82°51'02" W	184.43
L2B	S 82°51'02" W	184.43
L3A	S 82°51'02" W	184.43
L3B	S 82°51'02" W	184.43
L4A	S 82°51'02" W	184.43
L4B	S 82°51'02" W	184.43
L5A	S 82°51'02" W	184.43
L5B	S 82°51'02" W	184.43
L6A	S 82°51'02" W	184.43
L6B	S 82°51'02" W	184.43
L7A	S 82°51'02" W	184.43
L7B	S 82°51'02" W	184.43
L8A	S 82°51'02" W	184.43
L8B	S 82°51'02" W	184.43
L9A	S 82°51'02" W	184.43
L9B	S 82°51'02" W	184.43
L10A	S 82°51'02" W	184.43
L10B	S 82°51'02" W	184.43

FOUND NAIL
 C.P.T. INST. NO. 499850

SHEET 1 OF 2