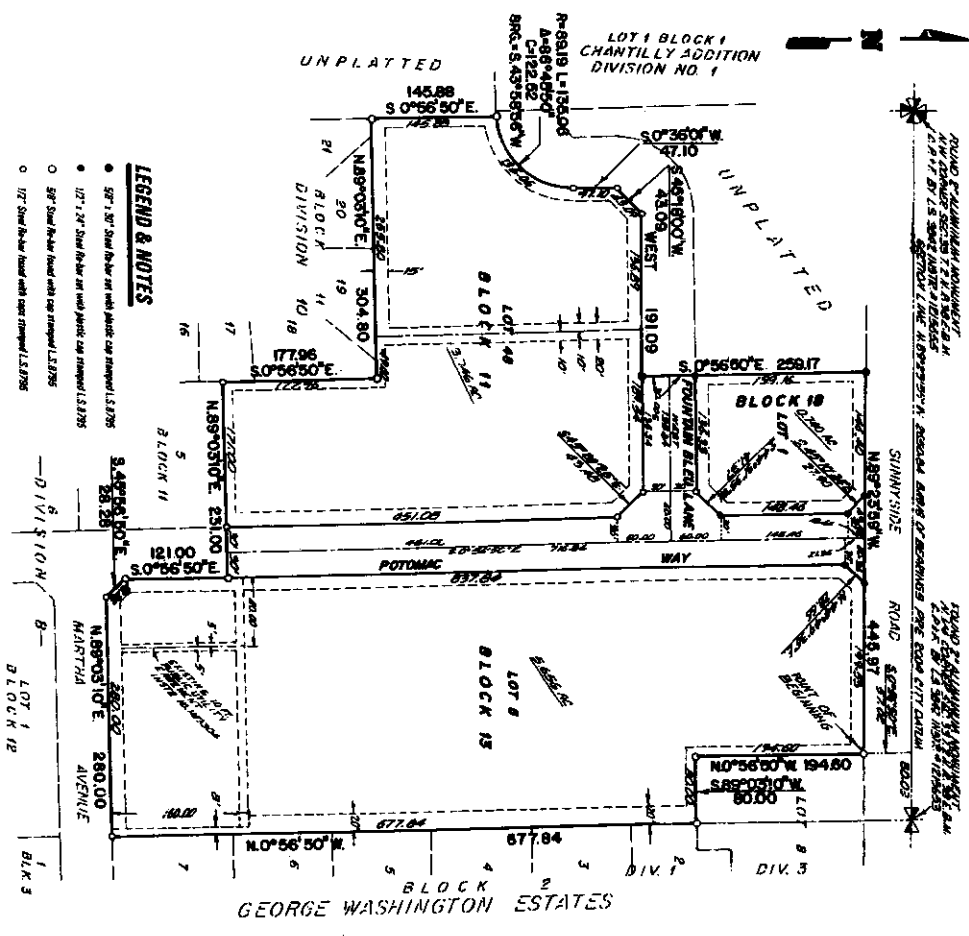


# ST. CLAIR ESTATES DIVISION NO. 13

## AN ADDITION TO THE CITY OF IDAHO FALLS BONNEVILLE COUNTY, IDAHO

BEING PART OF THE N.E.1/4 OF SECTION 33, T.2 N., R.39 E., B.M.  
WHICH INCLUDES A REPLAT OF A PART OF LOT 5, BLOCK 11, LOT 1, BLOCK 13, DIVISION NO. 8,  
LOTS 2, 3, 4, BLOCK 11, LOTS 2, 3, 4, BLOCK 13, DIVISION NO. 9 OF ST. CLAIR ESTATES  
AND PARTS OF POTOMAC WAY AND FOUNTAIN BLEU LANE



**LEGEND & NOTES**

- 50' x 100' Steel Rebar set with plastic cap stamped L.S. 8795
- 12" x 24" Steel Rebar set with plastic cap stamped L.S. 8795
- 50' Steel Rebar found with cap stamped L.S. 8795
- 12" Steel Rebar found with cap stamped L.S. 8795

A Show how each Utility Easement is properly placed along road. Property within each B.L. is shown as to the 1/4" and 1/2" road shown.

Direct access into Sunny Side Road from lot B. NOT ALLOWED.

First American Title Company  
Idaho Falls, ID 83404

While this is a photographic reproduction of the recorded plat, the company assumes no liability for variations, if any, with a re-survey.