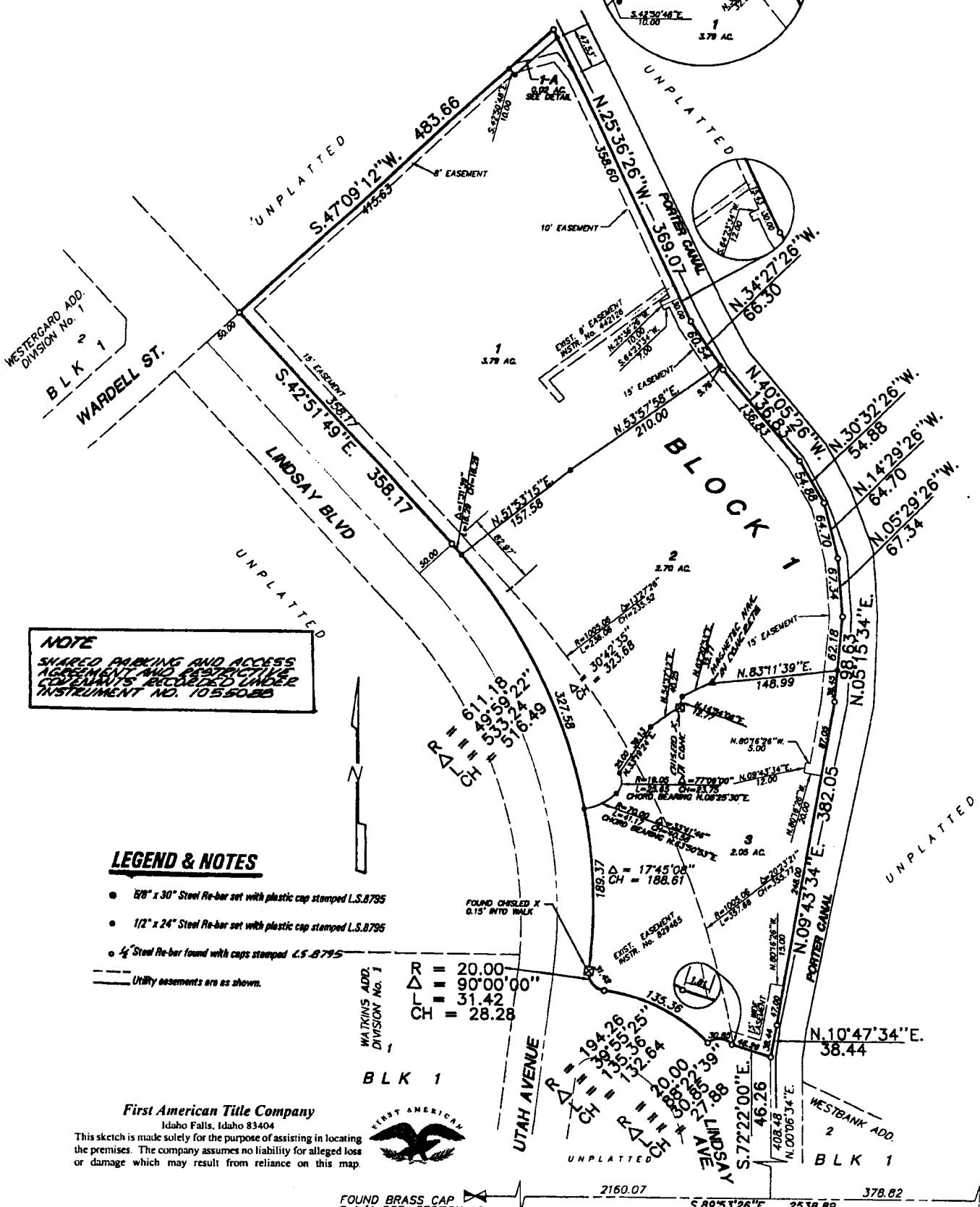


STARDUST ON THE RIVER

DIVISION NO. 1

AN ADDITION TO THE CITY OF IDAHO FALLS, BONNEVILLE COUNTY, IDAHO

BEING PART OF THE E 1/2 OF THE S.E. 1/4 SECTION 13 T.2N. R.37E. B.M.



NOTE
 SHARED PARKING AND ACCESS
 AGREEMENT AND RESTRICTIVE
 COVENANTS RECORDED UNDER
 INSTRUMENT NO. 1055088

LEGEND & NOTES

- 1/8" x 30" Steel Re-bar set with plastic cap stamped L.S.8795
 - 1/2" x 24" Steel Re-bar set with plastic cap stamped L.S.8795
 - 1/4" Steel Re-bar found with caps stamped L.S.8795
- Utility easements are as shown.

WATKINS ADD.
 DIVISION No. 1
 1
 R = 20.00
 Δ = 90°00'00"
 L = 31.42
 CH = 28.28

First American Title Company
 Idaho Falls, Idaho 83404
 This sketch is made solely for the purpose of assisting in locating
 the premises. The company assumes no liability for alleged loss
 or damage which may result from reliance on this map.



FOUND BRASS CAP
 S 1/4 COR. SECTION 13
 T. 2 N. R. 37 E. B.M.
 CP&F BY L.S.# 973
 INST. NO. 764160

S.89°53'26"E. 2538.89
 SECTION LINE (BASIS OF BEARING)
 CITY OF IDAHO FALLS DATUM

FOUND BRASS CAP
 W.C./M.C. COR. SECTIC
 T. 2 N. R. 37 E. B.M.
 CP&F BY L.S.# 973
 INST. NO. 655951