

PLANNING ALEXANDER CO.
 1111 W. 21ST ST. SUITE 200
 IDAHO FALLS, ID 83402
 PHONE: 334-5555

STONE ARBOR DIVISION NO. 1

BONNEVILLE COUNTY, IDAHO
 PART OF THE SW 1/4 OF THE NW 1/4 SEC. 24,
 TOWNSHIP 2 NORTH, RANGE 38 EAST OF THE BOISE MERIDIAN

UNPLATTED

LEGEND & NOTES

- 50" x 30" Steel rebar set with plastic cap stamped L.S. 8795
- 12" x 24" Steel rebar set with plastic cap stamped L.S. 8795
- 50" Steel rebar found with caps stamped L.S. 8795
- 12" Steel rebar found with caps stamped L.S. 8795

A 10-foot wide Utility Easement is hereby reserved along all road frontages within each lot. All other utility easements are shown here with unless noted otherwise.

Bonneville County will not maintain roads until improved to County Standards and officially approved and accepted.

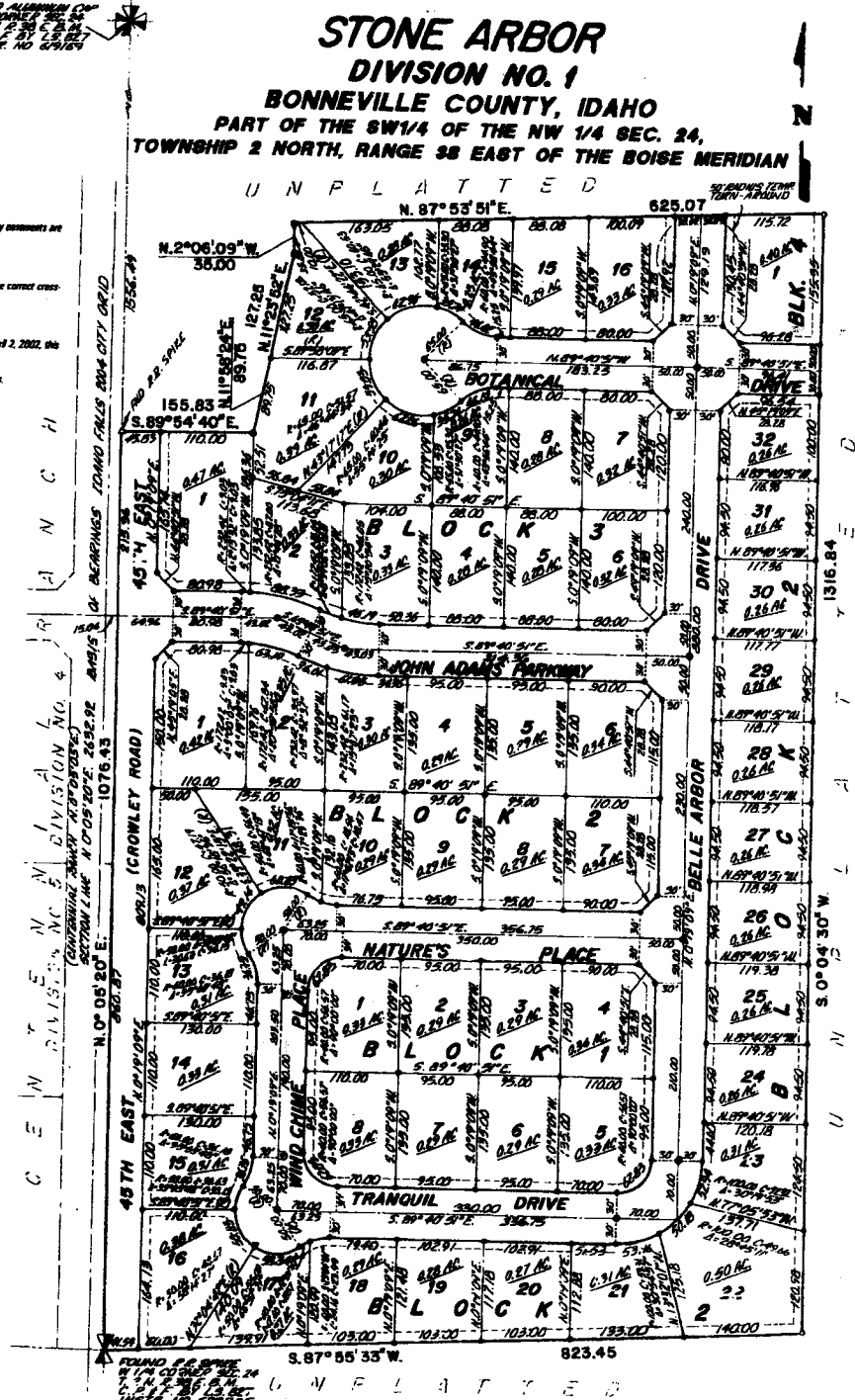
Drainage swales (gutters), private driveways and sidewalk approaches will be constructed and maintained with the correct cross-section as shown on the approved improvement drawings on file in the office of the County Engineer.

Vehicle access into 49th East from Lots 1 and 12 through 16, Block 2 and Lot 1, Block 3 IS NOT ALLOWED.

According to the FEMA Flood Plain FIRM map, Bonneville County Community Panel No. 18002702250, effective April 2, 2002, the subdivision lies in Zone X, area of minimal flooding.

Lots shown on this plat are included in a lighting district and will be assessed for the operation and maintenance costs.

First American Title Company
 Idaho Falls, Idaho 83406
 While this is a photographic reproduction of the recorded plat, the Company assumes no liability for variations, if any, with a re-survey.



UNPLATTED