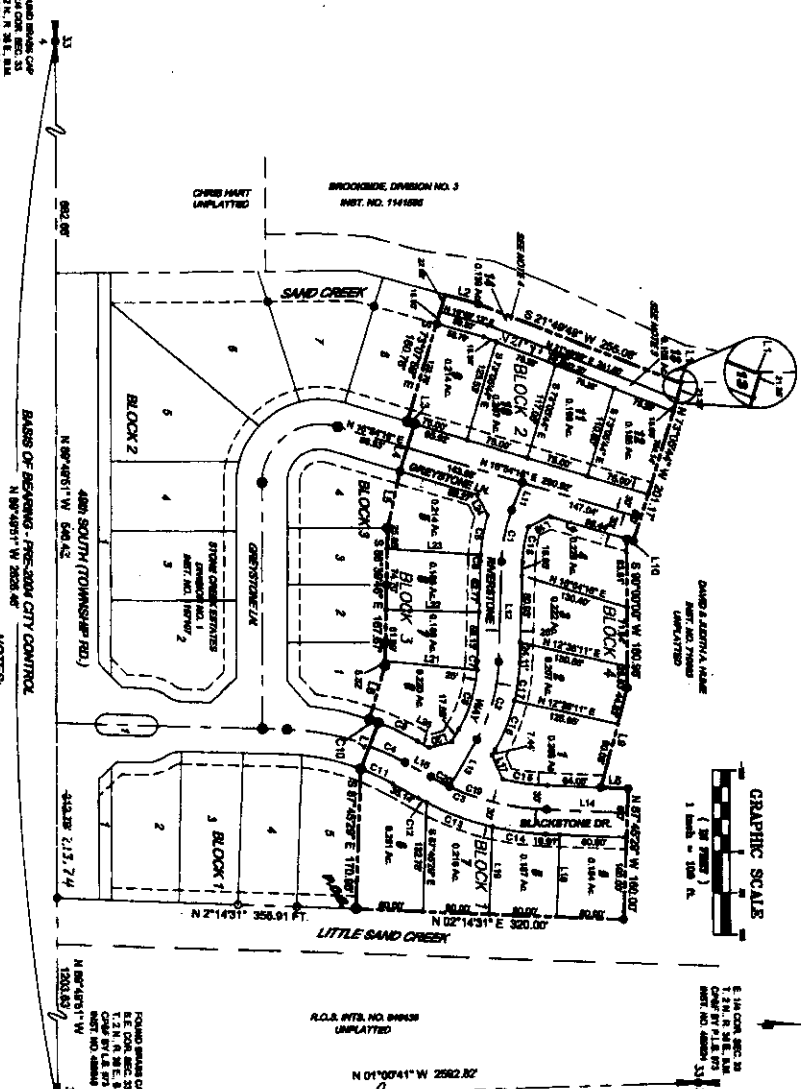


STONE CREEK ESTATES DIVISION NO. 2 AN ADDITION TO THE CITY OF IDAHO FALLS, BONNEVILLE COUNTY, IDAHO

BASED UPON THE RECORDED QUARTER SECTION OF SECTION 26, TOWNSHIP 2 NORTH, RANGE 20 EAST, 14th E.D. 18.



LEGEND:
 SUBDIVISION BOUNDARY LINE
 SUBDIVISION LOT LINES
 EXISTING EASEMENT SHELINES
 EASEMENT SHELINES
 EXISTING STREET CENTERLINE
 STREET CENTERLINE
 SECTION LINE
 SET 1/2" OR 24" REBAR WITH PLASTIC CORNERS AND END OF CLASSED
 SET 1/2" OR REBAR W/ 1/4" ALUM CAP
 STAMPED 'TRUES PLS 2341'
 FOUND OR REBAR STAMPED 'TRUES PLS 2341'
 FOUND OR REBAR STAMPED 'TRUES PLS 2341'

NOTES:
 1. A 1/2" FOOT UTILITY MARKING IS HEREBY RESERVED ALONG ALL ROAD FRONTAGES WITHIN EACH LOT. ALL OTHER EASEMENTS ARE NOTED.
 2. UNDEVELOPED AREAS WITHIN RIGHT-OF-WAY SHALL BE MAINTAINED BY THE HOMEOWNERS ASSOCIATION.
 3. LOT 13, BLOCK 2 IS DEDICATED TO THE CITY OF IDAHO FALLS FOR RECREATION/PARKWAY.
 4. LOT 14, BLOCK 2 IS FOR RECREATION & FLOOD CONTROL AND SHALL BE MAINTAINED BY THE HOMEOWNERS ASSOCIATION.

First American Title Company
 Idaho Falls, ID 83404
 While this is a photographic reproduction of the recorded plat, the company assumes no liability for variations, if any, with a re-survey.

BAISIS OF BEARING:
 FOUND BRASS CAP
 E. 1/4 COR. SEC. 26
 CHAIN BY L.S. PITS
 DIST. NO. 458848
 DIST. NO. 458848

BAISIS OF BEARING:
 FOUND BRASS CAP
 E. 1/4 COR. SEC. 26
 CHAIN BY L.S. PITS
 DIST. NO. 458848
 DIST. NO. 458848

BAISIS OF BEARING:
 FOUND BRASS CAP
 E. 1/4 COR. SEC. 26
 CHAIN BY L.S. PITS
 DIST. NO. 458848
 DIST. NO. 458848

BAISIS OF BEARING:
 FOUND BRASS CAP
 E. 1/4 COR. SEC. 26
 CHAIN BY L.S. PITS
 DIST. NO. 458848
 DIST. NO. 458848

BAISIS OF BEARING:
 FOUND BRASS CAP
 E. 1/4 COR. SEC. 26
 CHAIN BY L.S. PITS
 DIST. NO. 458848
 DIST. NO. 458848

CURVE TABLE

NUMBER	DELTA ANGLE	CHORD DIRECTION	TANGENT	RADIUS	ARC LENGTH	CHORD LENGTH
C1	18°33'59"	S 78°50'00" E	32.75	300.00	94.82	94.63
C2	27°46'29"	S 74°04'00" E	56.11	300.00	98.21	97.22
C3	09°56'43"	S 16°07'15" W	14.13	300.00	146.34	143.82
C4	12°41'37"	S 25°32'00" E	23.42	300.00	146.75	143.82
C5	01°51'00"	S 78°53'15" E	3.83	325.00	7.28	7.26
C6	03°28'00"	S 80°23'00" E	8.32	115.00	10.84	10.84
C7	24°28'00"	S 77°18'30" E	31.87	130.00	61.85	62.66
C8	10°28'17"	S 24°32'00" W	5.78	330.00	11.82	11.82
C9	10°28'17"	S 25°32'00" W	5.78	370.00	11.82	11.82
C10	02°00'00"	N 25°32'00" E	4.77	300.00	11.84	11.84
C11	02°00'00"	N 25°32'00" E	4.77	320.00	11.84	11.84
C12	02°00'00"	N 25°32'00" E	4.77	350.00	11.84	11.84
C13	14°40'42"	N 07°58'27" E	42.51	320.00	84.55	84.32
C14	11°04'52"	N 07°58'27" E	32.00	320.00	84.55	84.32
C15	11°22'50"	N 07°58'27" E	28.00	320.00	84.55	84.32
C16	18°18'34"	S 87°00'17" E	32.17	225.00	63.82	63.54
C17	11°51'00"	N 80°45'30" W	23.13	225.00	48.57	48.48
C18	14°24'00"	S 13°41'00" W	40.72	300.00	119.82	119.82
C19	27°53'01"	S 13°41'00" W	60.72	300.00	119.82	119.82
C20	04°22'28"	N 27°53'01" E	12.77	300.00	26.52	26.51

LANE TABLE

NUMBER	DIRECTION	DISTANCE
L1	S 07°00'00" E	5.00'
L2	S 11°45'15" W	41.14'
L3	N 11°54'18" E	8.00'
L4	S 77°04'00" E	70.84'
L5	S 77°48'45" E	67.84'
L6	S 69°28'42" E	60.00'
L7	S 02°43'15" W	32.82'
L8	N 79°01'15" W	134.87'
L9	N 89°54'45" E	56.97'
L10	S 89°32'45" E	8.20'
L11	S 89°32'45" E	131.89'
L12	S 89°32'45" E	60.81'
L13	S 89°32'45" E	74.71'
L14	S 89°32'45" E	55.14'
L15	S 89°32'45" E	38.44'
L16	S 89°32'45" E	32.02'
L17	S 89°32'45" E	100.50'
L18	S 87°48'22" E	108.10'
L19	S 11°00'00" E	32.28'
L20	S 11°00'00" E	118.89'
L21	S 07°20'15" W	111.85'
L22	S 07°20'15" W	112.84'
L23	S 07°42'28" W	28.10'
L24	N 01°42'27" E	15.87'
L25	S 30°00'00" W	15.87'