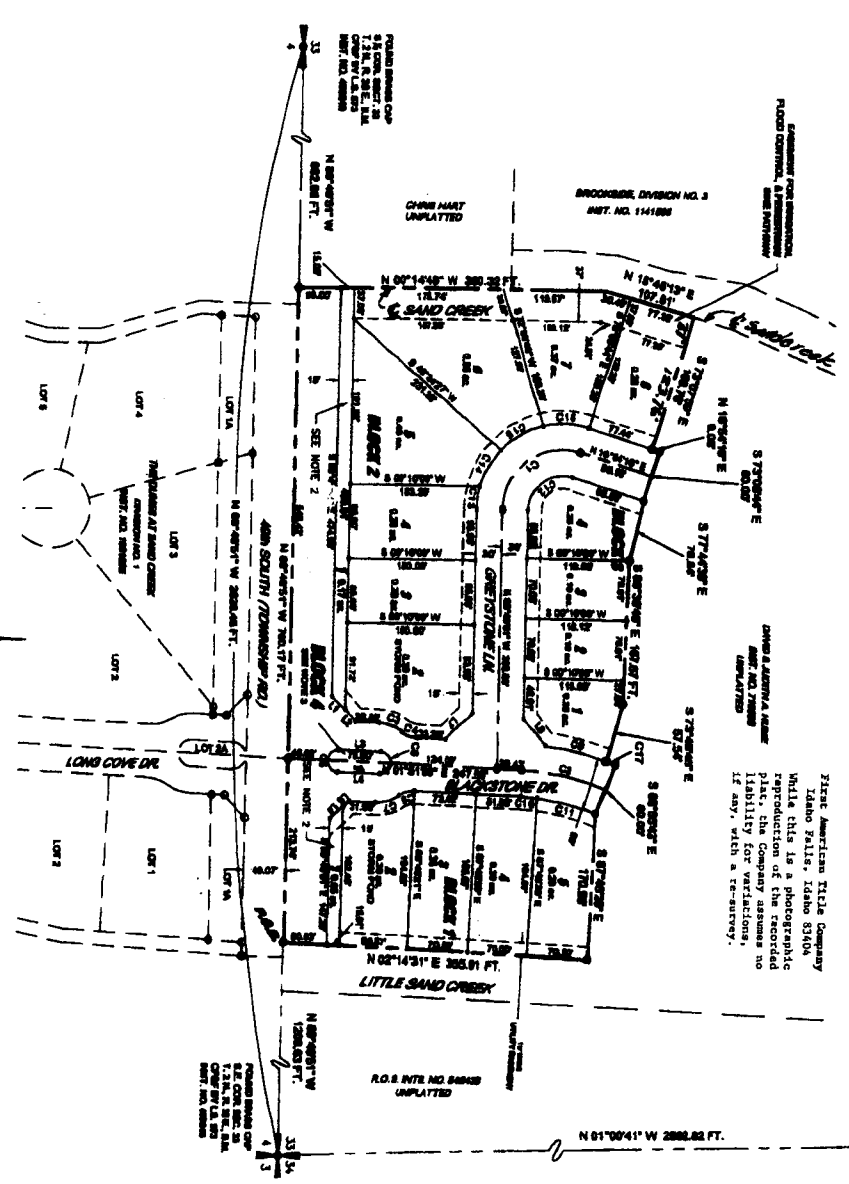


STONE CREEK ESTATES DIVISION NO. 1 AN ADDITION TO THE CITY OF IRVING FALLS, DORNEVILLE COUNTY, IOWA

First American Title Company
Iowa Falls, Iowa 51304
While this is a photographic
reproduction of the recorded
plat, the Company assumes no
liability for variations
if any, with a survey.



CURVE TABLE

NUMBER	DELTA ANGLE	CHORD DIRECTION	TANGENT	ARC LENGTH	CHORD LENGTH
C1	106°44'07"	N 89°27'47" W	84.14	120.00	120.00
C2	97°42'12"	S 11°28'07" W	80.76	100.00	100.00
C3	97°42'12"	S 11°28'07" W	80.76	100.00	100.00
C4	97°42'12"	S 11°28'07" W	80.76	100.00	100.00
C5	97°42'12"	S 11°28'07" W	80.76	100.00	100.00
C6	97°42'12"	S 11°28'07" W	80.76	100.00	100.00
C7	97°42'12"	S 11°28'07" W	80.76	100.00	100.00
C8	97°42'12"	S 11°28'07" W	80.76	100.00	100.00
C9	97°42'12"	S 11°28'07" W	80.76	100.00	100.00
C10	97°42'12"	S 11°28'07" W	80.76	100.00	100.00
C11	97°42'12"	S 11°28'07" W	80.76	100.00	100.00
C12	97°42'12"	S 11°28'07" W	80.76	100.00	100.00
C13	97°42'12"	S 11°28'07" W	80.76	100.00	100.00
C14	97°42'12"	S 11°28'07" W	80.76	100.00	100.00
C15	97°42'12"	S 11°28'07" W	80.76	100.00	100.00
C16	97°42'12"	S 11°28'07" W	80.76	100.00	100.00
C17	97°42'12"	S 11°28'07" W	80.76	100.00	100.00

BASES OF BEARINGS

THE LINE BETWEEN THE S.E. CORNER OF SECTION 35 AND SECTION 36, TOWNSHIP 2 NORTH, RANGE 28 WEST, R.M. SOUTH 89°27'47" WEST

LINE TABLE

NUMBER	DIRECTION	DISTANCE
L1	N 89°27'47" W	21.87
L2	N 89°27'47" W	11.87
L3	N 89°27'47" W	11.87
L4	N 89°27'47" W	11.87
L5	N 89°27'47" W	11.87
L6	N 89°27'47" W	11.87
L7	N 89°27'47" W	11.87
L8	N 89°27'47" W	11.87
L9	N 89°27'47" W	11.87
L10	N 89°27'47" W	11.87
L11	N 89°27'47" W	11.87
L12	N 89°27'47" W	11.87
L13	N 89°27'47" W	11.87
L14	N 89°27'47" W	11.87
L15	N 89°27'47" W	11.87
L16	N 89°27'47" W	11.87
L17	N 89°27'47" W	11.87
L18	N 89°27'47" W	11.87



LEGEND

- HARBORSON BOUNDARY LINE
- LOT LINES
- EASEMENT BOUNDARY LINE
- STREET CENTERLINE
- SECTION LINE
- EMBOWING LOT LINES
- SET 1/4" BY 3/4" BEARS WITH PLASTER CAP ETIMBER THINER PL 20" x 4" CONCRETE AND END OF CURBERS SET 1/4" BEAR WITH ALUM CAP STAMPED THINER PL 20" x 4" FOUND 1/4" BEAR

NOTES

1. A 1/4" BEAR WITH PLASTER CAP ETIMBER THINER PL 20" x 4" CONCRETE AND END OF CURBERS SET 1/4" BEAR WITH ALUM CAP STAMPED THINER PL 20" x 4" FOUND 1/4" BEAR
2. LOT 1, BLOCK 1, SECTION 2 ARE ASSIGNED TO THE HARBORSON ASSOCIATION FOR LANDSCAPING AND SOAK BATTERS AND ARE CONSIDERED IN THIS BEAR WITH HARBORSON ASSOCIATION
3. UNIMPROVED AREA WITHIN BARRIERS OF 10' AND SHALL BE MAINTAINED BY THE HARBORSON ASSOCIATION