

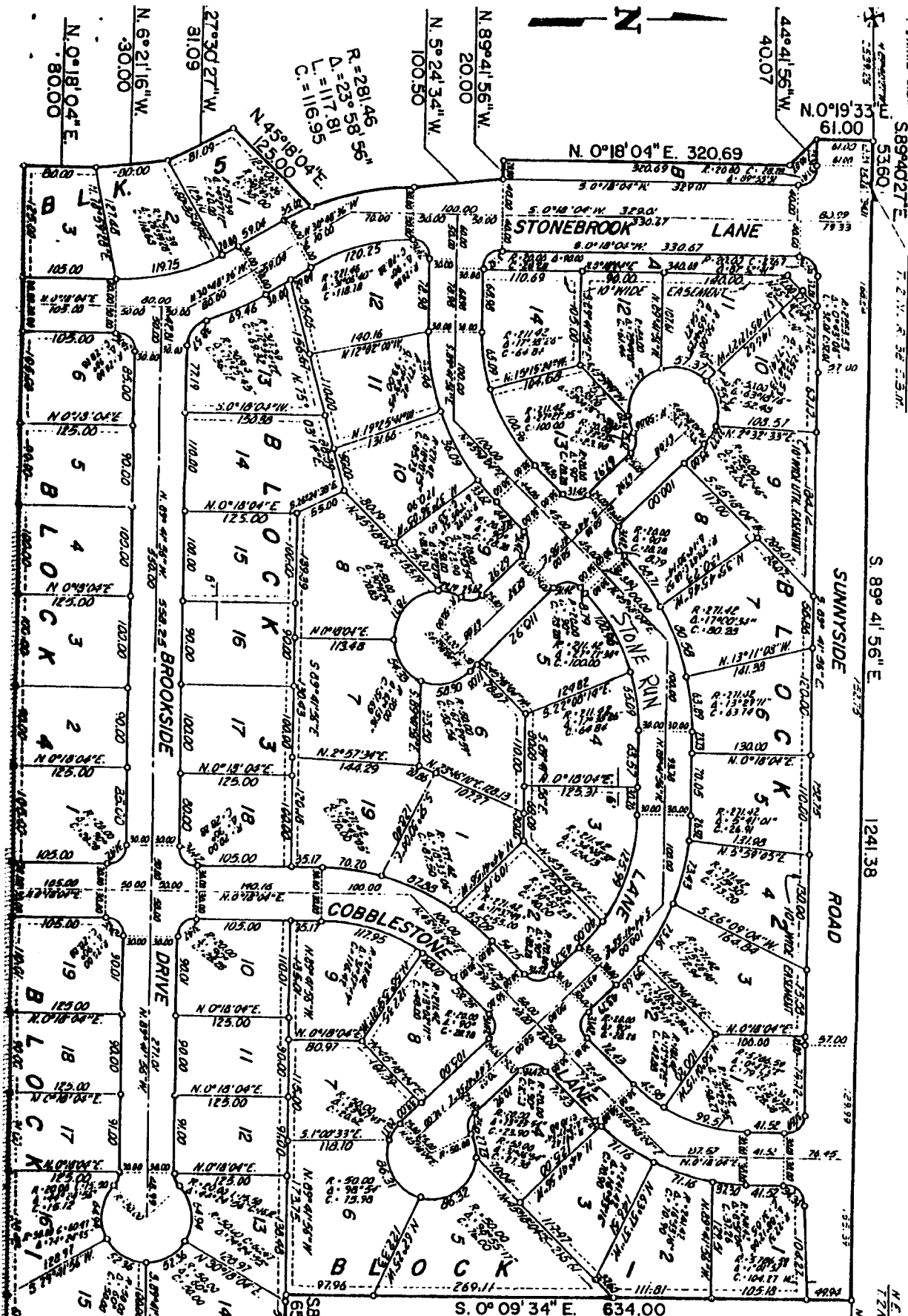
STONEBROOK

DIVISION NO. 1

AN ADDITION TO THE CITY OF IDAHO FALLS, BONNEVILLE COUNTY, IDAHO
 A PORTION OF THE NORTH 1/2 OF SECTION 31 T. 2 N. R. 38 E. B. M.

NOTES

Designates 1707 ROOS
 Utility Easements shown are as per
 wide unless otherwise noted.
 A 10' wide easement not shown is
 hereby granted along all streets
 frontages.



First American Title Company

Idaho Falls, Idaho 83404

This sketch is made solely for the purpose of assisting in locating the premises. The company assumes no liability for alleged loss or damage which may result from reliance on this map.

