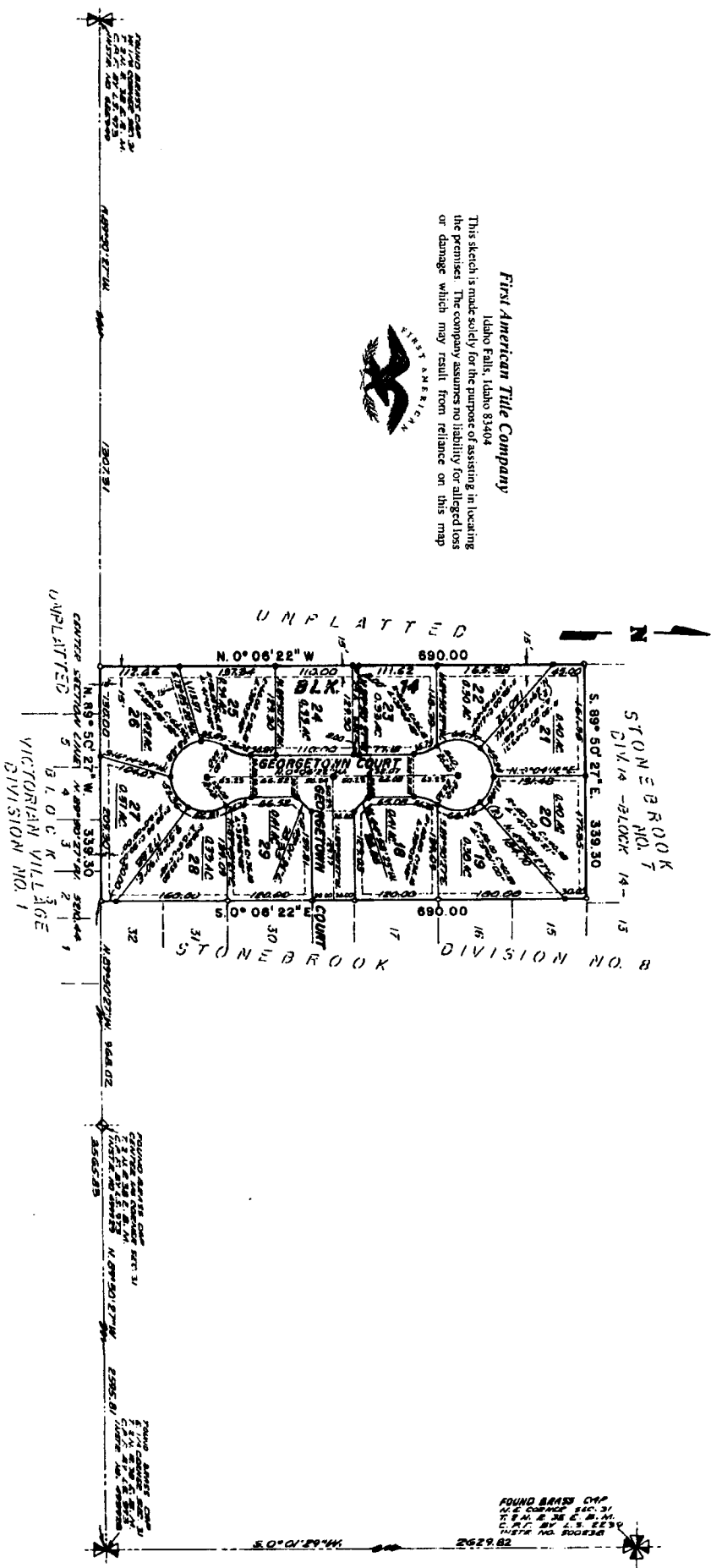


**STONEBROOK
DIVISION NO. 16**
AN ADDITION TO THE CITY OF IDAHO FALLS
BONNEVILLE COUNTY, IDAHO
BEING PART OF THE N.W. 1/4 OF SECTION 31, T.2 N., R.38 E., B.M.

First American Title Company
Idaho Falls, Idaho 83404
This sketch is made solely for the purpose of assisting in locating the premises. The company assumes no liability for alleged loss or damage which may result from reliance on this map.



- LEGEND & NOTES**
- 5/8" x 3/8" Steel Plate iron survey cap stamped (L.S.B.)
 - 1/2" x 3/8" Steel Plate iron survey cap stamped (L.S.B.)
 - 5/8" Steel Plate iron nail (L.S.B.) stamped (L.S.B.)
 - 1/2" Steel Plate iron nail (L.S.B.) stamped (L.S.B.)
1. This map and plat is prepared in conformity with the laws of Idaho and the rules of the State Board of Surveyors and the rules of the State Board of Equalization and shall be subject to their jurisdiction.