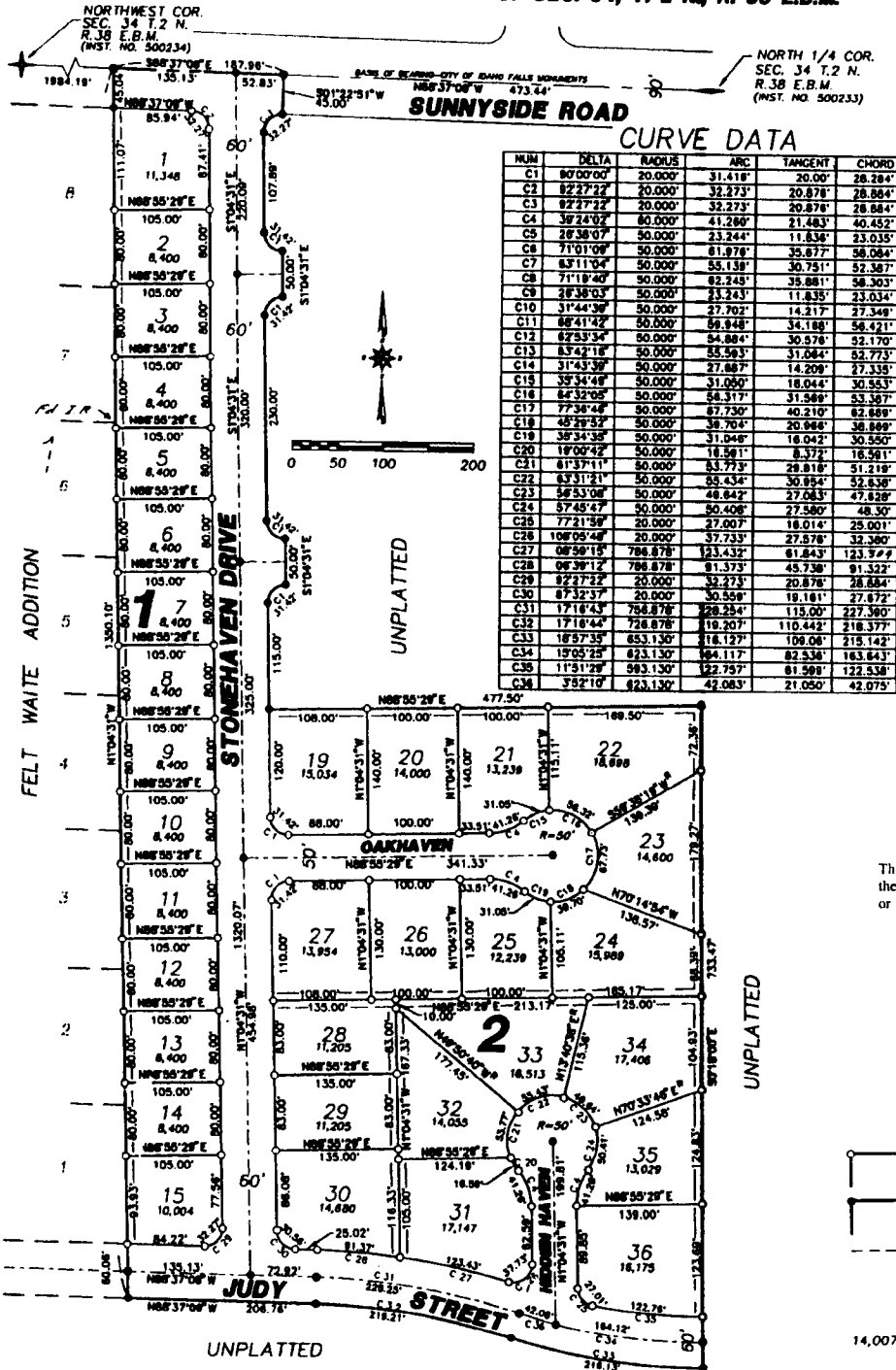


# STONEHAVEN

## DIVISION NO. 1

CITY OF AMMON, BONNEVILLE COUNTY, IDAHO  
PART OF THE EAST 1/2 OF THE N.W. 1/4 OF SEC. 34, T. 2 N., R. 38 E.B.M.



**CURVE DATA**

NUM	DELTA	RADIUS	ARC	TANGENT	CHORD
C1	80°00'00"	20.000'	31.418'	20.00'	26.284'
C2	82°27'32"	20.000'	32.273'	20.878'	26.884'
C3	82°27'32"	20.000'	32.273'	20.878'	26.884'
C4	38°24'02"	80.000'	41.289'	21.483'	40.452'
C5	28°38'07"	50.000'	23.244'	11.836'	23.035'
C6	71°01'09"	50.000'	61.978'	35.877'	58.084'
C7	83°11'09"	50.000'	55.139'	30.751'	52.387'
C8	71°18'40"	50.000'	62.243'	35.881'	58.303'
C9	28°38'03"	50.000'	23.243'	11.835'	23.034'
C10	31°44'39"	50.000'	27.702'	14.217'	23.348'
C11	88°41'42"	50.000'	58.848'	34.188'	58.421'
C12	62°53'34"	80.000'	54.864'	30.578'	52.170'
C13	83°42'18"	50.000'	55.563'	31.044'	52.773'
C14	31°44'39"	50.000'	27.867'	14.209'	23.338'
C15	38°34'49"	50.000'	31.050'	18.044'	30.553'
C16	84°32'05"	50.000'	54.317'	31.589'	53.387'
C17	77°38'48"	80.000'	67.730'	40.210'	62.689'
C18	48°28'52"	50.000'	38.704'	20.868'	38.889'
C19	38°34'38"	50.000'	31.048'	18.042'	30.550'
C20	18°02'42"	80.000'	18.581'	8.372'	18.581'
C21	81°37'19"	50.000'	83.793'	28.818'	51.218'
C22	83°31'21"	50.000'	85.434'	30.894'	52.838'
C23	58°53'08"	50.000'	48.842'	27.083'	47.889'
C24	57°48'47"	50.000'	50.408'	27.580'	48.30'
C25	77°21'58"	20.000'	27.007'	16.014'	25.001'
C26	108°08'48"	20.000'	37.733'	27.878'	32.380'
C27	08°50'15"	786.878'	123.432'	61.843'	123.377'
C28	08°39'12"	786.878'	91.373'	45.738'	91.322'
C29	82°27'32"	20.000'	32.273'	20.878'	26.884'
C30	87°32'37"	20.000'	30.559'	18.181'	27.672'
C31	17°18'43"	786.878'	28.254'	115.00'	227.380'
C32	17°18'44"	786.878'	19.207'	110.442'	218.377'
C33	18°57'35"	653.130'	18.127'	108.08'	218.142'
C34	18°57'25"	623.130'	18.117'	82.538'	163.643'
C35	11°21'28"	593.130'	12.797'	81.589'	122.538'
C36	38°21'10"	823.130'	42.083'	21.050'	42.075'

**First American Title Company**  
Idaho Falls, Idaho 83404

This sketch is made solely for the purpose of assisting in locating the premises. The company assumes no liability for alleged loss or damage which may result from reliance on this map



**NOTES**

- indicates a 1/2" x 24" iron rod placed with a yellow plastic cap marked L.S. 722.
- indicates a 5/8" x 30" iron rod placed with a yellow plastic cap marked L.S. 722.
- utility and drainage easements are 8' thru each lot unless otherwise shown.
- o 16' wide utility and sidewalk easement is reserved along the street side of all lots.
- 14,007 indicates lot area in square feet.