

# STONEHAVEN

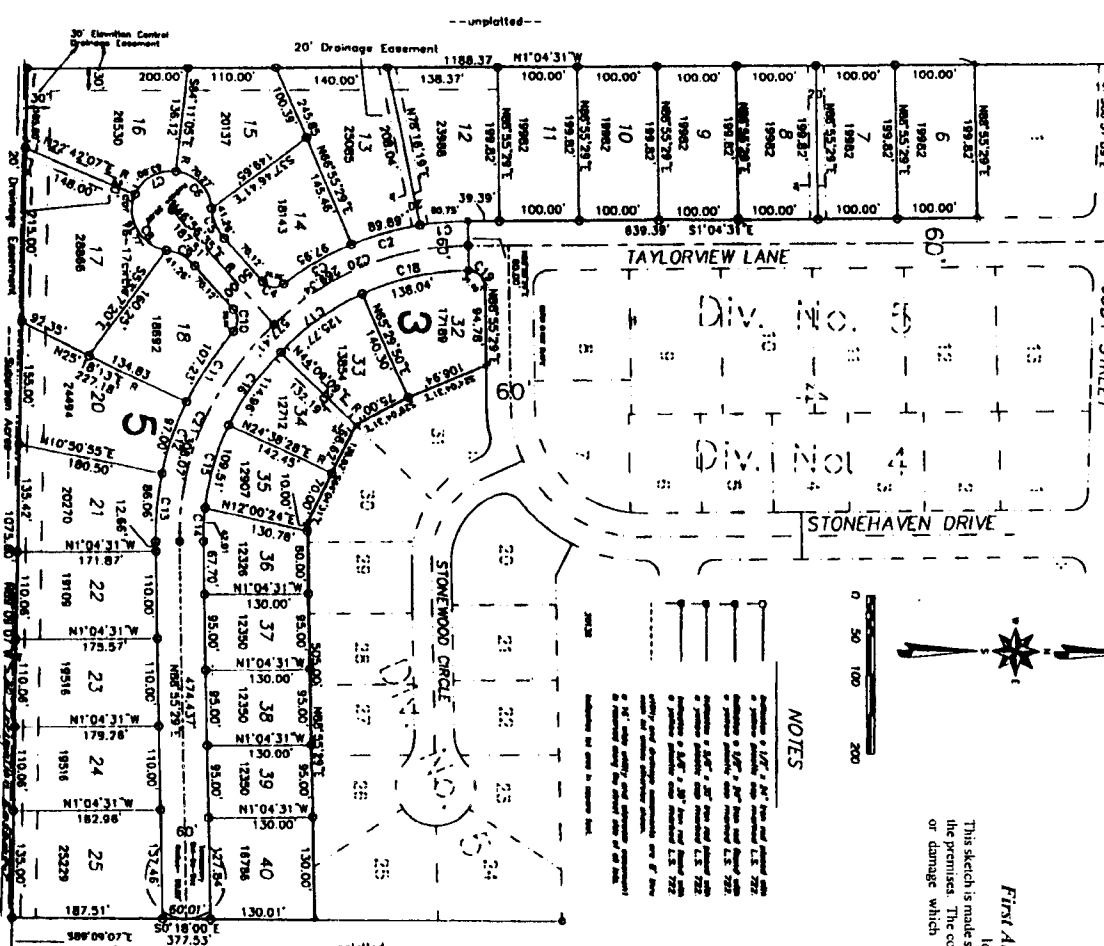
## DIVISION NO. 6

CITY OF AMMON, BONNEVILLE COUNTY, UTAH  
 PART OF THE EAST 1/2 OF THE NW 1/4 OF SEC. 34, T. 2 N., R. 28 E. 4M.  
 (Including amended plat of Lot 2, 3, 4 and 5, Block 5, of Stonehaven) Div. No. 5

North 1/4 Cor.  
 Sec. 34, T. 2 N.,  
 R. 28 E. 4M.  
 (Incl. No. 500233)

City of Ammon  
 2645,59'

North 1/4 Cor.  
 Sec. 34, T. 2 N.,  
 R. 28 E. 4M.  
 (Incl. No. 500233)



### NOTES

1. This sketch is made solely for the purpose of assisting in locating the premises. The company assumes no liability for alleged loss or damage which may result from reliance on this map.
2. The company assumes no liability for alleged loss or damage which may result from reliance on this map.
3. The company assumes no liability for alleged loss or damage which may result from reliance on this map.
4. The company assumes no liability for alleged loss or damage which may result from reliance on this map.
5. The company assumes no liability for alleged loss or damage which may result from reliance on this map.
6. The company assumes no liability for alleged loss or damage which may result from reliance on this map.
7. The company assumes no liability for alleged loss or damage which may result from reliance on this map.
8. The company assumes no liability for alleged loss or damage which may result from reliance on this map.
9. The company assumes no liability for alleged loss or damage which may result from reliance on this map.
10. The company assumes no liability for alleged loss or damage which may result from reliance on this map.
11. The company assumes no liability for alleged loss or damage which may result from reliance on this map.
12. The company assumes no liability for alleged loss or damage which may result from reliance on this map.
13. The company assumes no liability for alleged loss or damage which may result from reliance on this map.
14. The company assumes no liability for alleged loss or damage which may result from reliance on this map.
15. The company assumes no liability for alleged loss or damage which may result from reliance on this map.
16. The company assumes no liability for alleged loss or damage which may result from reliance on this map.
17. The company assumes no liability for alleged loss or damage which may result from reliance on this map.
18. The company assumes no liability for alleged loss or damage which may result from reliance on this map.
19. The company assumes no liability for alleged loss or damage which may result from reliance on this map.
20. The company assumes no liability for alleged loss or damage which may result from reliance on this map.
21. The company assumes no liability for alleged loss or damage which may result from reliance on this map.
22. The company assumes no liability for alleged loss or damage which may result from reliance on this map.
23. The company assumes no liability for alleged loss or damage which may result from reliance on this map.
24. The company assumes no liability for alleged loss or damage which may result from reliance on this map.
25. The company assumes no liability for alleged loss or damage which may result from reliance on this map.
26. The company assumes no liability for alleged loss or damage which may result from reliance on this map.
27. The company assumes no liability for alleged loss or damage which may result from reliance on this map.
28. The company assumes no liability for alleged loss or damage which may result from reliance on this map.
29. The company assumes no liability for alleged loss or damage which may result from reliance on this map.
30. The company assumes no liability for alleged loss or damage which may result from reliance on this map.
31. The company assumes no liability for alleged loss or damage which may result from reliance on this map.
32. The company assumes no liability for alleged loss or damage which may result from reliance on this map.
33. The company assumes no liability for alleged loss or damage which may result from reliance on this map.
34. The company assumes no liability for alleged loss or damage which may result from reliance on this map.
35. The company assumes no liability for alleged loss or damage which may result from reliance on this map.
36. The company assumes no liability for alleged loss or damage which may result from reliance on this map.
37. The company assumes no liability for alleged loss or damage which may result from reliance on this map.
38. The company assumes no liability for alleged loss or damage which may result from reliance on this map.
39. The company assumes no liability for alleged loss or damage which may result from reliance on this map.
40. The company assumes no liability for alleged loss or damage which may result from reliance on this map.



**First American Tile Company**  
 Idaho Falls, Idaho 83404

NAME	DETA.	BARBAR.	ABC.	CHORD
C1	848.17'	397.54'	60.75'	60.84'
C2	1749.30'	397.54'	89.68'	89.50'
C3	1408.35'	397.54'	87.85'	87.70'
C4	837.48'	397.54'	78.36'	78.27'
C5	397.2407'	397.54'	41.36'	40.45'
C6	867.145'	397.54'	70.77'	64.83'
C7	3708.48'	397.54'	133.80'	58.35'
C8	1069.93'	397.54'	81.77'	78.47'
C9	397.2407'	397.54'	41.36'	40.45'
C10	837.48'	397.54'	78.36'	78.27'
C11	1527.10'	397.54'	107.23'	108.51'
C12	1358.40'	397.54'	107.23'	108.51'
C13	1728.00'	397.54'	114.86'	114.81'
C14	707.90'	397.54'	42.01'	41.89'
C15	1830.00'	397.54'	114.86'	114.81'
C16	1830.00'	397.54'	114.86'	114.81'
C17	3120.47'	397.54'	175.77'	175.84'
C18	4228.58'	397.54'	138.64'	137.80'
C19	4228.58'	397.54'	138.64'	137.80'
C20	4228.58'	397.54'	138.64'	137.80'
C21	4801.08'	397.54'	200.07'	200.15'

Center of Section 34  
 (Incl. No. 499823)