

FIRST AMENDED PLAT OF STONEHAVEN DIVISION NO. 7

CITY OF AMMON, BONNEVILLE COUNTY, IDAHO
PART OF THE NORTH 1/2 OF SEC. 34 T. 2 N. R. 38 E.B.M.
INCLUDING A REPLAT OF LOTS 1 THRU 16, BLOCK 7,
LOT 1, BLOCK 6, AND ALL OF BLOCKS 8 AND 9
OF STONEHAVEN DIVISION NUMBER 7

First American Title Company
 Idaho Falls, Idaho 83404

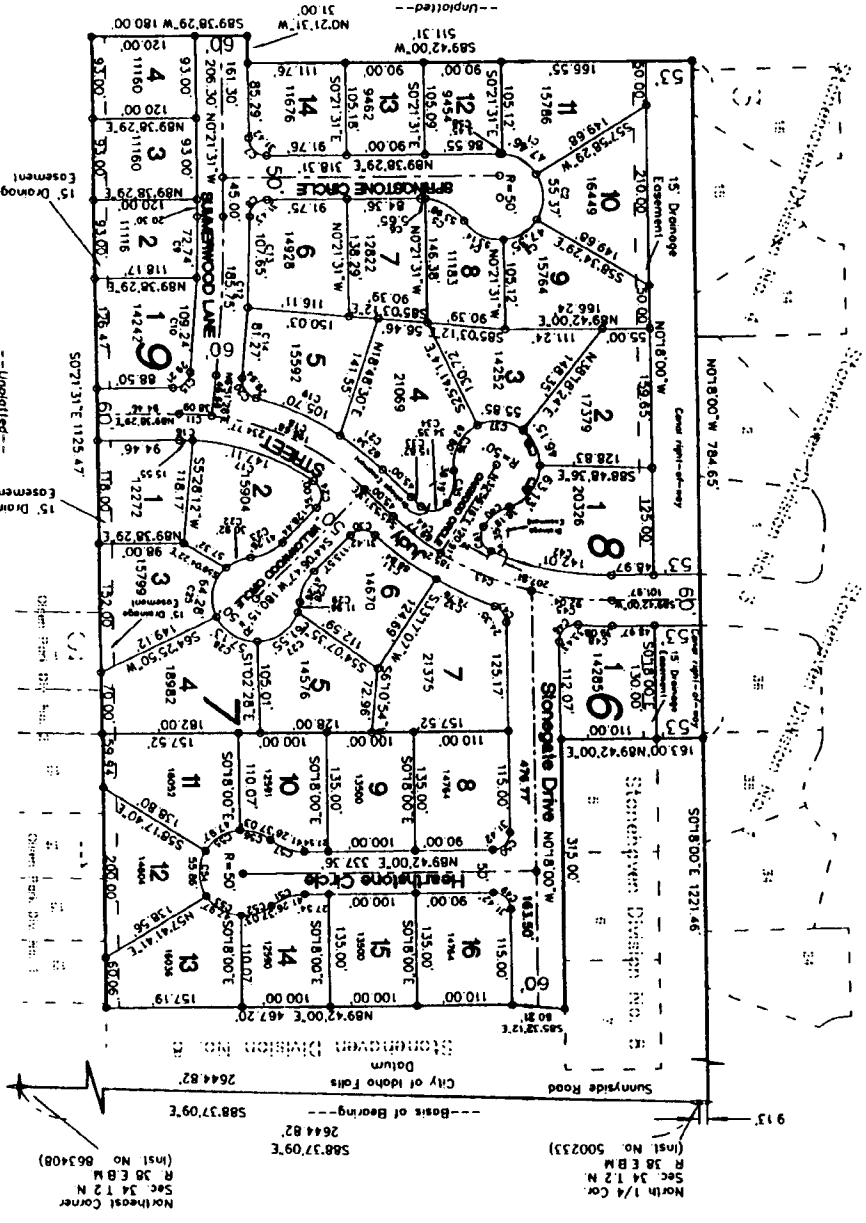
This sketch is made solely for the purpose of assisting in locating the premises. The company assumes no liability for alleged loss or damage which may result from reliance on this map.



NUM	DELTA	RADIUS	ARC	BEARING	CHORD
C1	5422.46	50.00	47.46	S89°12'54"E	43.69
C2	6377.02	50.00	55.37	S07°18'00"E	52.58
C3	5415.44	50.00	47.35	S54°33'23"W	45.80
C4	6033.52	50.00	53.14	N63°51'48"W	50.68
C5	5132.51	60.00	53.98	S59°11'17"E	52.18
C6	5723.47	60.00	5.65	S87°29'37"E	5.65
C7	8020.00	20.00	31.42	N45°27'31"W	28.28
C8	8020.23	20.00	31.43	N44°39'41"E	28.29
C9	2752.63	1444.83	22.24	S108°01'W	22.23
C10	419.55	1444.83	108.24	S44°13'07"W	109.21
C11	712.57	302.48	38.09	S66°43'01"E	38.07
C12	712.58	1472.83	185.75	S174°58'W	183.83
C13	4305.54	1504.83	107.65	S141°26'W	107.62
C14	3705.39	1504.83	81.27	S171°14'W	81.26
C15	8247.01	202.22	29.21	S48°14'59"W	26.74
C16	316.09	272.48	15.55	S88°43'25"E	15.55
C17	3056.04	272.48	147.11	S71°37'18"E	145.33
C18	1812.56	332.48	196.68	S64°30'53"E	193.23
C19	8140.51	71.00	28.94	N34°00'27"W	27.47
C20	8140.51	71.00	28.94	N34°00'27"W	27.47
C21	1044.31	332.48	62.34	S51°15'33"E	62.25
C22	3525.31	300.00	30.92	N65°48'01"E	30.43
C23	3924.02	80.00	41.26	S63°48'48"W	40.45
C24	10016.02	20.00	35.00	S67°11'4"E	30.70
C25	7339.22	50.00	64.28	N115°31'E	58.94
C26	6528.18	50.00	57.13	N58°18'19"W	54.08
C27	7032.10	60.00	61.55	S53°41'26"W	57.74
C28	3924.02	60.00	41.26	N24°24'46"E	40.45
C29	1342.36	50.00	11.96	S11°34'03"W	11.94
C30	9020.00	20.00	31.42	N89°06'47"E	28.28
C31	13307.41	387.21	88.64	N52°27'04"W	88.64
C32	1102.52	387.21	74.76	N64°32'31"W	74.64
C33	243.59	327.71	15.82	N47°18'12"W	15.82
C34	9824.33	20.00	34.35	S82°08'52"W	30.28
C35	4035.20	33.91	36.19	S12°38'35"W	37.29
C36	7157.50	50.00	62.80	N28°19'50"E	58.75
C37	6359.38	50.00	55.85	S83°41'25"E	52.99
C38	5252.59	50.00	46.15	S25°51'06"E	44.53
C39	7220.12	90.00	63.13	S24°21'30"W	59.02
C40	4035.20	53.91	36.19	N53°33'56"E	37.59
C41	9874.33	20.00	34.35	N16°16'11"W	30.28
C42	2434.42	327.21	115.47	N66°18'36"W	114.97
C43	1878.43	357.71	68.77	N51°28'38"W	69.66
C44	1170.31	357.71	97.04	N62°35'43"W	91.78
C45	1142.31	357.71	97.04	N62°35'43"W	91.78
C46	8746.31	20.00	33.43	N47°35'18"E	29.61
C47	8745.47	20.00	24.35	S37°10'54"E	22.88
C48	546.30	387.71	38.08	N87°24'44"W	38.08
C49	9020.00	20.00	31.42	S45°18'00"E	28.28
C50	9020.00	20.00	31.42	S44°42'00"W	28.28
C51	3924.02	60.00	41.26	N69°39'59"E	40.45
C52	4225.43	50.00	37.03	S71°30'50"W	36.19
C53	5437.59	50.00	47.97	N59°47'19"W	46.15
C54	6430.59	50.00	58.86	N01°18'19"E	53.00
C55	5437.58	50.00	47.97	N69°11'19"E	46.15
C56	4225.43	50.00	37.03	S72°08'50"E	36.19
C57	3924.02	60.00	41.26	N10°33'59"W	40.43
C58	3571.13	50.00	3.43	S88°27'54"E	3.43

NOTES

1. All bearings and distances are true.
2. All bearings are given in degrees, minutes and seconds.
3. All distances are given in feet and inches.
4. All corners are to be established by monuments.
5. All monuments are to be of iron pipe or steel pipe.
6. All monuments are to be set in concrete.
7. All monuments are to be set in a permanent location.
8. All monuments are to be set in a conspicuous location.
9. All monuments are to be set in a location that is not subject to change.
10. All monuments are to be set in a location that is not subject to removal.
11. All monuments are to be set in a location that is not subject to destruction.
12. All monuments are to be set in a location that is not subject to decay.
13. All monuments are to be set in a location that is not subject to theft.
14. All monuments are to be set in a location that is not subject to tampering.
15. All monuments are to be set in a location that is not subject to alteration.



Note: The property line of Open Port was re-established from existing property corners.

Northwest Corner
 Sec 34 T 2 N
 R 38 E B.M.
 (Inst. No. 863408)

North 1/4 Cor.
 Sec 34 T 2 N
 R 38 E B.M.
 (Inst. No. 500233)

City of Idaho Falls
 Datum
 Stonehaven Division No. 7