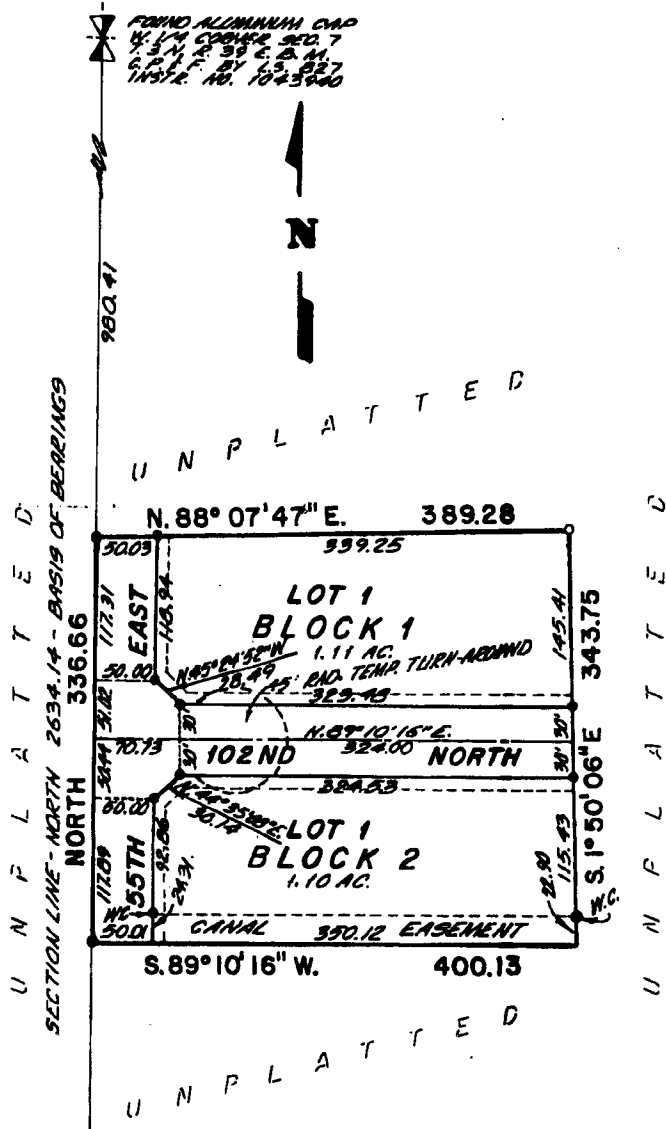


# STRINGHAM ACRES DIVISION NO. 1 BONNEVILLE COUNTY, IDAHO

BEING PART OF LOT 3, SECTION 7, T. 3 N., R. 39 E., B. M.



**LEGEND & NOTES**

- 60" x 30" Steel Re-bar set with plastic cap stamped L.S. 8795
- 1/2" x 24" Steel Re-bar set with plastic cap stamped L.S. 8795
- 1/2" Steel Re-bar found with caps stamped L.S. 8795

----- A ten foot wide Utility Easement is hereby reserved along all road frontages within each lot.  
All other easements are eight foot wide unless otherwise noted.

**DIRECT ACCESS FROM LOTS ONTO 55TH EAST IS NOT ALLOWED**

**THE COUNTY WILL NOT MAINTAIN ROADS UNTIL CONSTRUCTED TO COUNTY STANDARDS AND OFFICIALLY ACCEPTED**

**First American Title Company**

Idaho Falls, Idaho 83404

This sketch is made solely for the purpose of assisting in locating the premises. The company assumes no liability for alleged loss or damage which may result from reliance on this map.



FOUND SPHERE NAIL  
S. W. CORNER SEC. 7  
T. 3 N. R. 39 E. B. M.  
C. P. F. BY L. S. 887  
INSTR. NO. 49765

FOUND ALUMINUM CAP  
S. W. CORNER SEC. 7  
T. 3 N. R. 39 E. B. M.  
C. P. F. BY L. S. 887  
INSTR. NO. 1043400