

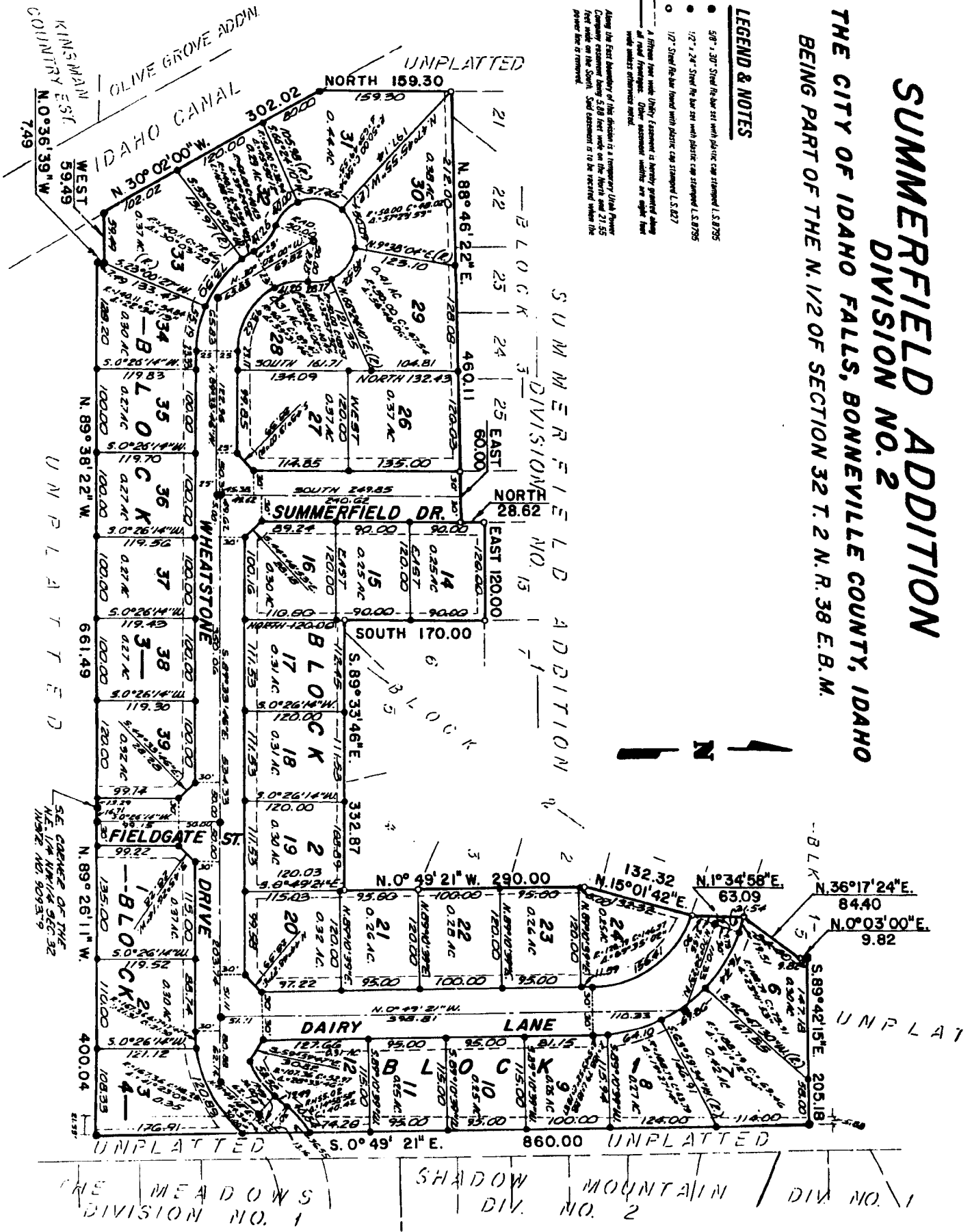
SUMMERFIELD ADDITION

DIVISION NO. 2

TO THE CITY OF IDAHO FALLS, BONNEVILLE COUNTY, IDAHO
BEING PART OF THE N. 1/2 OF SECTION 32 T. 2 N. R. 38 E. B.M.

LEGEND & NOTES

- 5/8" x 30" Steel Rebar set with plastic cap stamped L.S.8795
 - 1/2" x 24" Steel Rebar set with plastic cap stamped L.S.8795
 - 1/2" Steel Rebar found with plastic cap stamped L.S.827
 - A Filter pipe with Utility Easement is hereby granted along all road frontages. Other easement widths are right line wide unless otherwise noted.
- Along the East boundary of this division is a temporary Utah Power Company easement being 5.88 feet wide on the North and 21.55 feet wide on the South. Said easement is to be retained when the power line is removed.



THE MEADOWS DIVISION NO. 1 SHADOW MOUNTAIN DIV. NO. 2 DIV. NO. 1