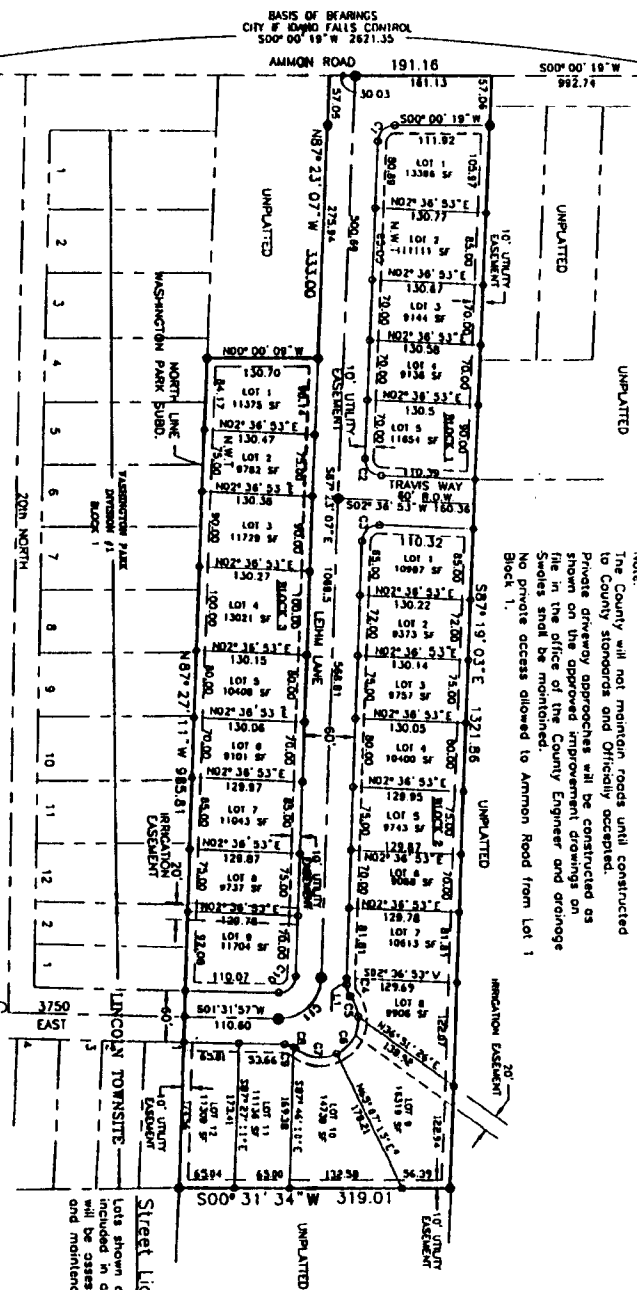


- section corner
- 1/2" iron rod with plastic cap
- marked PELS 3435
- 5/8" iron rod with plastic cap
- marked PELS 3435
- easement line (oil easements are 10' unless otherwise noted)

# SUMMERSET SUBDIVISION

IN BONNEVILLE COUNTY, IDAHO  
PART OF THE SW 1/4 OF SECTION 11  
TOWNSHIP 2 NORTH, RANGE 38 EAST

**Note:**  
The County will not maintain roads until constructed to County standards and Officially accepted. Private driveway approaches will be constructed as shown on the approved improvement drawings on file in the office of the County Engineer and drainage Swales shall be mentioned. No private access allowed to Ammon Road from Lot 1 Block 1.



NUMBER	DELTA	MONS	LENGTH	TANGENT	CHORD	BEARING
C1	87° 23' 34"	20.00	30.51	18.11	27.63	S43° 41' 24" E
C2	90° 00' 00"	20.00	31.42	20.00	28.28	S47° 38' 53" W
C3	90° 00' 00"	20.00	31.42	20.00	28.28	S47° 23' 07" E
C4	38° 42' 34"	20.00	13.86	7.22	13.59	N72° 49' 24" E
C5	33° 07' 35"	45.00	28.02	13.38	25.66	N69° 27' 57" E
C6	68° 05' 21"	45.00	54.26	51.03	N69° 25' 25" W	
C7	68° 07' 38"	45.00	51.84	28.28	48.10	N68° 11' 03" E
C8	08° 37' 18"	20.00	3.01	1.51	3.01	N42° 38' 42" E
C9	31° 05' 34"	20.00	10.65	5.28	10.65	N42° 38' 42" E
C10	68° 25' 04"	20.00	17.60	8.80	18.75	N42° 38' 42" E
C11	68° 25' 04"	20.00	17.60	8.80	18.75	S47° 33' 07" E

N.W.T. - Owned by Northwest Trust

*First American Title Company*

This sketch is made solely for the purpose of assisting in locating the premises. The company assumes no liability for alleged loss or damage which may result from reliance on this map



**Street Lighting District**  
Lots shown on this plat are included in a lighting district and will be assessed for the operation and maintenance costs.