

# SUMMIT PARK

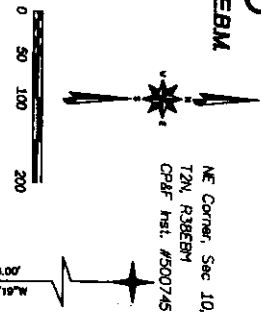
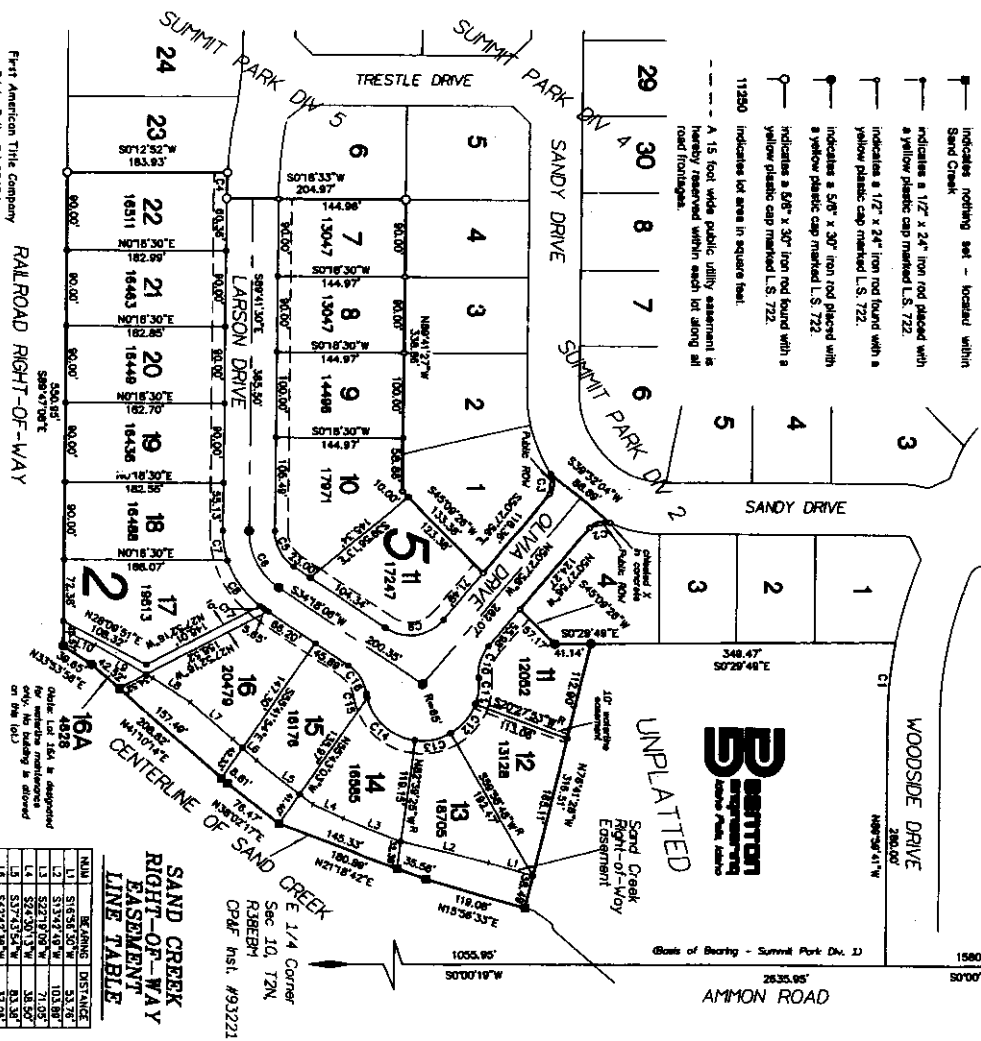
## DIVISION NO. 9

### BONNEVILLE COUNTY, IDAHO

PART OF THE NE 1/4 OF SECTION 10, T. 2 N., R. 36 E.B.M.

#### NOTES

- indicates nothing set - located within Sand Creek
- indicates a 1/2" x 24" iron rod placed with a yellow plastic cap marked L.S. 722.
- indicates a 1/2" x 24" iron rod found with a yellow plastic cap marked L.S. 722.
- indicates a 5/8" x 3/8" iron rod placed with a yellow plastic cap marked L.S. 722.
- indicates a 5/8" x 3/8" iron rod found with a yellow plastic cap marked L.S. 722.
- indicates a 5/8" x 3/8" iron rod found with a yellow plastic cap marked L.S. 722.
- indicates lot area in square feet.
- A 15 foot wide public utility easement is hereby reserved within each lot along all road frontages.



NE Corner, Sec 10,  
T2N, R36E4M  
C-P-R hsl #500745

First American Title Company  
12000 Falls, Id 83404

While this is a photographic reproduction of the recorded plat, the company assumes no liability for variations, if any, with a re-survey.

#### SAND CREEK RIGHT-OF-WAY EASEMENT LINE TABLE

CHAIN	BEARING	DISTANCE
L1	S16°54'20"W	33.78'
L2	S13°52'03"W	103.88'
L3	S22°10'08"W	71.05'
L4	S24°51'13"W	38.52'
L5	S24°51'13"W	38.52'
L6	S40°42'30"W	57.02'
L7	S40°42'30"W	55.44'
L8	S27°37'30"W	51.22'
L9	S20°27'00"W	78.88'
L10	S72°24'54"W	40.30'

#### CURVE TABLE

CHAIN	DELTA	ARC	RADIUS	BEARING DISTANCE
C1	107°37'42"	81.88'	500.50'	S84°45'50"E 81.73'
C2	73°32'21"	25.78'	20.00'	S13°31'44"E 24.04'
C3	73°32'21"	25.78'	20.00'	N87°40'00"W 24.04'
C4	33°01'54"	23.83'	944.08'	S88°10'57"E 28.84'
C5	78°00'24"	78.80'	50.00'	N82°31'18"E 46.83'
C6	84°00'24"	55.48'	50.00'	N82°31'18"E 36.32'
C7	18°28'48"	55.48'	110.00'	N84°51'08"E 58.48'
C8	84°00'24"	78.87'	50.00'	N84°51'08"E 87.41'
C9	45°00'12"	50.48'	50.00'	S73°33'33"E 30.18'
C10	39°00'15"	44.83'	85.00'	N82°37'59"W 43.88'
C11	39°00'15"	44.83'	85.00'	N17°01'00"W 71.84'
C12	82°00'14"	44.41'	85.00'	N78°13'57"E 44.41'
C13	45°00'15"	46.07'	50.00'	S27°18'44"W 38.07'
C14	25°42'26"	5.98'	110.00'	N29°45'19"E 5.98'