

SUMMIT RUN

DIVISION NO. 1

TO THE CITY OF IDAHO FALLS, IDAHO
PART OF THE N.E. 1/4 OF SECTION 32, T. 2 N., R. 38 E.B.M.

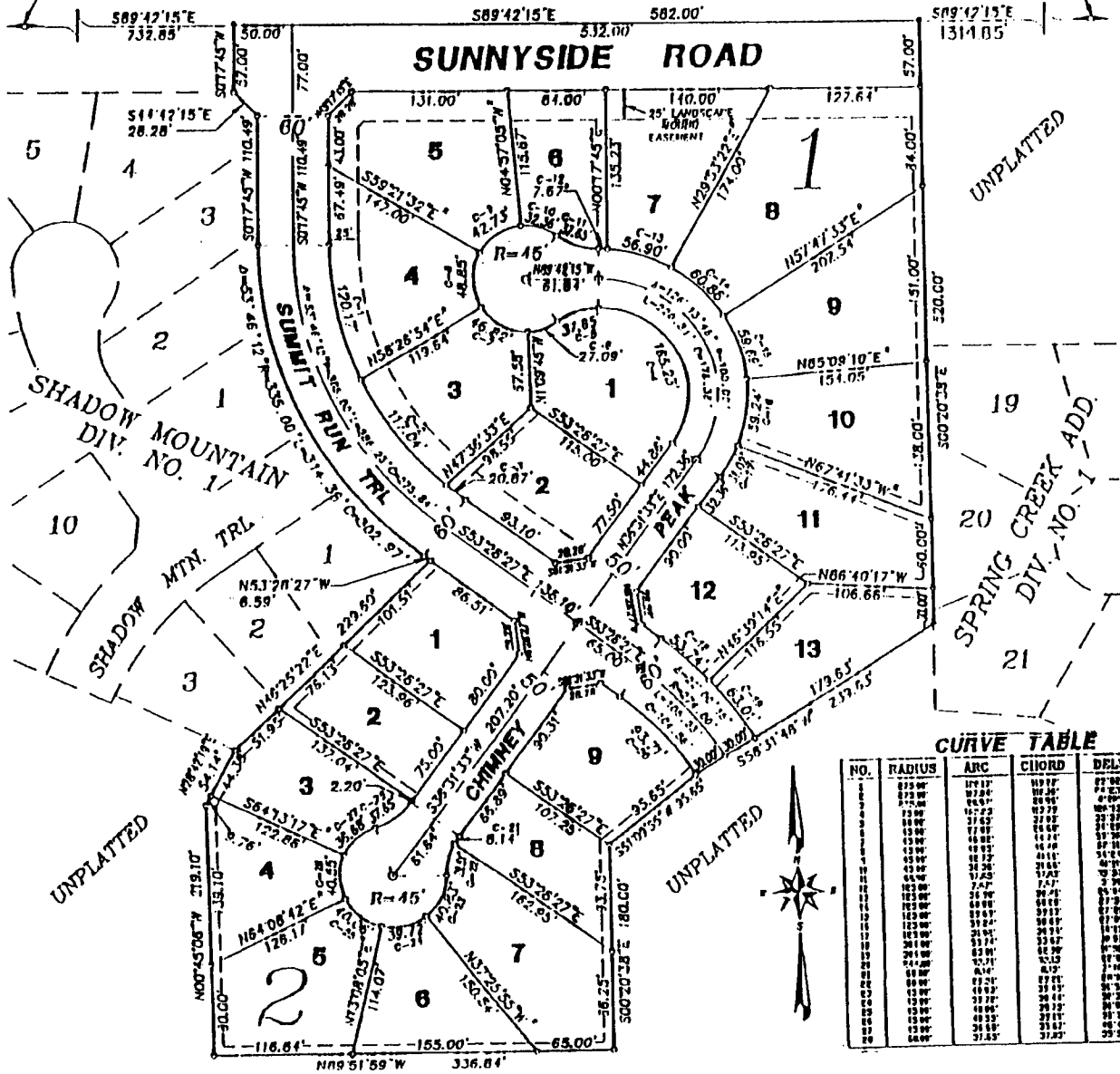
First American Title Company

Idaho Falls, Idaho 83404

This sketch is made solely for the purpose of assisting in locating the premises. The company assumes no liability for alleged loss or damage which may result from reliance on this map.

NORTH 1/4 COR. SEC. 32,
T. 2 N., R. 38 E.B.M.
(CITY MONUMENT)

N.E. COR. SEC. 32,
T. 2 N., R. 38 E.B.M.
(CITY MONUMENT)



CURVE TABLE

NO.	RADIUS	ARC	CHORD	DELTA	TANGENT
1	10	1.5708	1.9613	36.87	9.5156
2	20	3.1416	3.9226	73.74	19.0312
3	30	4.7124	5.8839	110.61	28.5468
4	40	6.2832	7.8452	147.48	38.0624
5	50	7.8540	9.8065	184.35	47.5780
6	60	9.4248	11.7678	221.22	57.0936
7	70	10.9956	13.7291	258.09	66.6092
8	80	12.5664	15.6904	294.96	76.1248
9	90	14.1372	17.6517	331.83	85.6404
10	100	15.7080	19.6130	368.70	95.1560
11	110	17.2788	21.5743	405.57	104.6716
12	120	18.8496	23.5356	442.44	114.1872
13	130	20.4204	25.4969	479.31	123.7028
14	140	21.9912	27.4582	516.18	133.2184
15	150	23.5620	29.4195	553.05	142.7340
16	160	25.1328	31.3808	589.92	152.2496
17	170	26.7036	33.3421	626.79	161.7652
18	180	28.2744	35.3034	663.66	171.2808
19	190	29.8452	37.2647	700.53	180.7964
20	200	31.4160	39.2260	737.40	190.3120
21	210	32.9868	41.1873	774.27	199.8276

NOTES

- indicates a 1/2" x 24" iron rod placed with a yellow plastic cap marked L.S. 760.
- - - utility easements are 8' thru each lot unless otherwise shown.
- a 10' wide utility easement is reserved along the street side of all lots.
- indicates a street monument placed after construction.