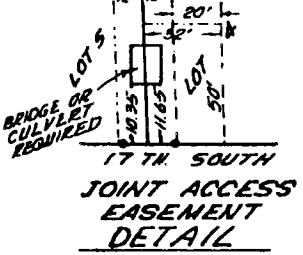
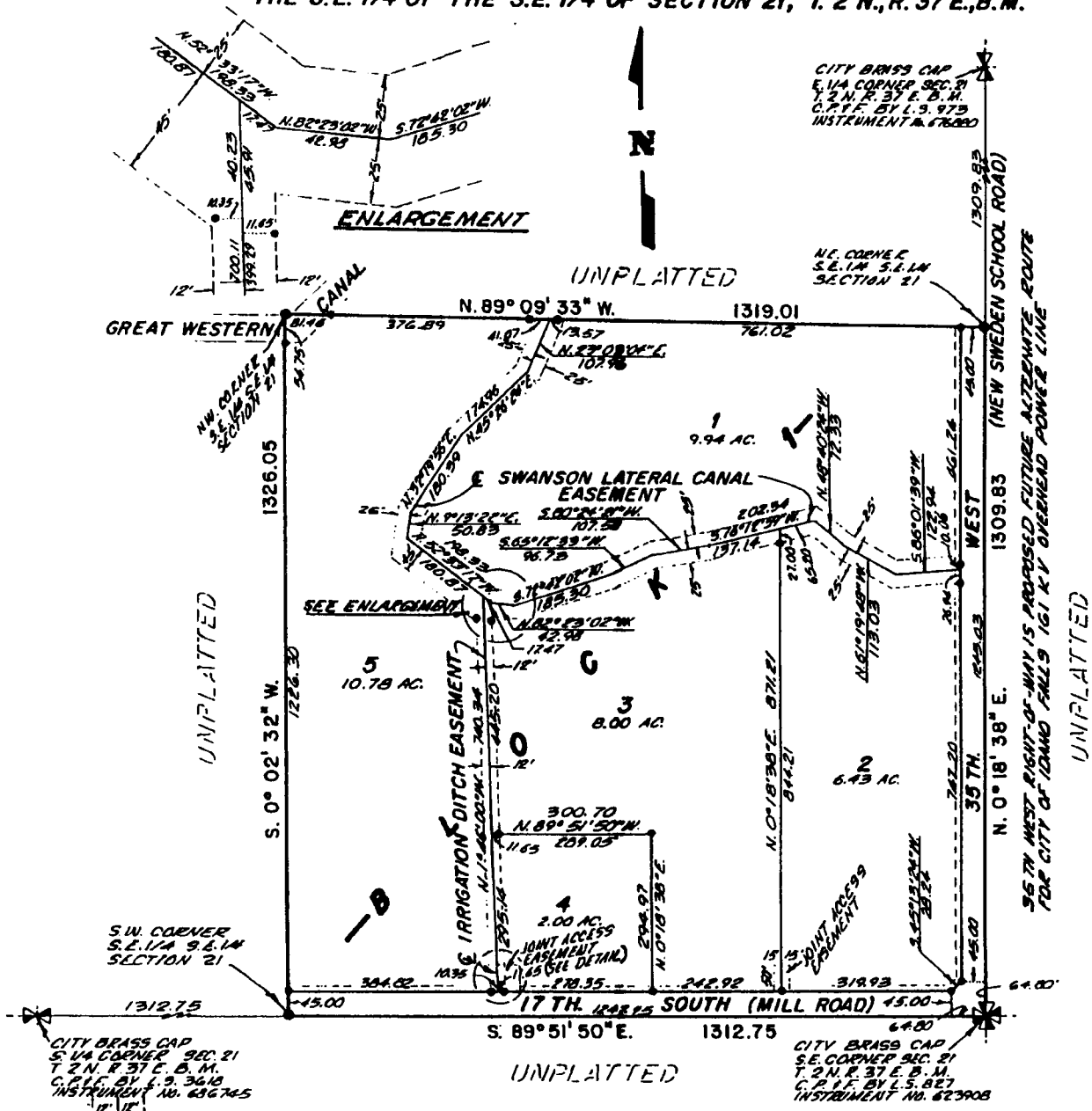


SUNHAVEN ACRES DIVISION NO. 1 BONNEVILLE COUNTY, IDAHO

THE S.E. 1/4 OF THE S.E. 1/4 OF SECTION 21, T. 2 N., R. 37 E., B.M.



LEGEND

- Denotes 5/8" x 30" steel re-bar with plastic cap stamped L.S. 827
- Denotes 1/2" x 24" steel re-bar with plastic cap stamped L.S. 827
- A ten feet wide utility easement is hereby granted along all road frontages through each lot.
- Irrigation canal and ditch easements widths are as shown

NOTES

Access from 17th South is limited to:
 One joint access for lots 2 and 3, Block 1
 One joint access for lots 4 and 5, Block 1

The existing access on the corner of 17th South and 35th West, serving Lot 2, Block 1 is allowed to continue in use until such time as the house is demolished.

The one existing access serving Lot 1, Block 1 remains unchanged.

First American Title Company
 Idaho Falls, Idaho 83404

This sketch is made solely for the purpose of assisting in locating the premises. The company assumes no liability for alleged loss or damage which may result from reliance on this map.

