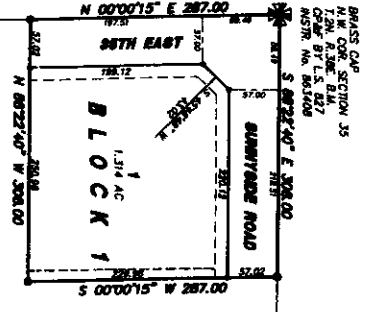
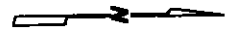


SUNNYSIDE MAVERIK
DIVISION NO. 1
AN ADDITION TO THE CITY OF AMMON,
BONNEVILLE COUNTY, IDAHO
BEING PART OF THE NW 1/4 OF SECTION 35, T2N R30E B.M.



SECTION LINE (BASED ON RECORD)
 AMMON PLATS, DIVISION NO. 1
 S 89°22'40" E 284.35
 2333.35

First American Title Company
 Idaho Falls, ID 83404
 While this is a photographic
 reproduction of the recorded
 plat, the company assumes
 no liability for variations,
 if any, with a re-survey.

LEGEND & NOTES

- 5/8" x 3/8" Steel stake set with plastic cap stamped L.S. 81795
 - 1/2" x 2 1/2" Steel stake set with plastic cap stamped L.S. 81795
 - Steel survey signs with weathered aluminum L.S. 81795
4. All items to be removed by the property owner at their expense. All items to be removed by the property owner at their expense. All items to be removed by the property owner at their expense.

BRASS CAP
 N 1/4 CORNER
 SECTION 35
 T2N R30E B.M.
 CORNER BY L.S. 8171
 INSTR. NO. 764599

MAJ LANE CORNER
 N 1/4 CORNER
 SECTION 35
 T2N R30E B.M.
 CORNER BY L.S. 8170
 INSTR. NO. 760310