

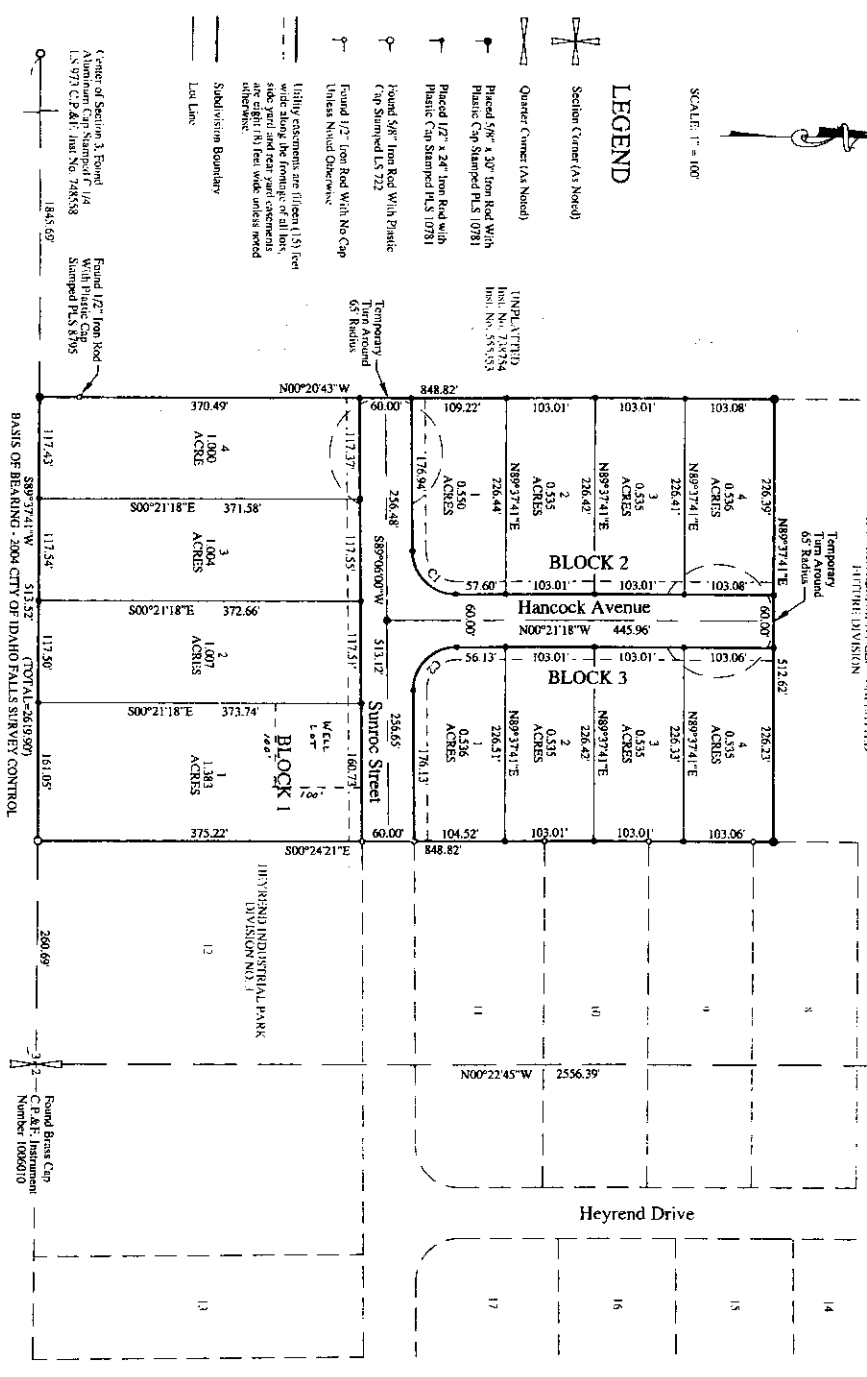
FINAL PLAT OF SUNROCC PARK DIVISION NO. 1

PART OF THE NE 1/4 OF SECTION 3, T. 1N., R. 37E., B.M.
BONNEVILLE COUNTY, IDAHO

First American Title Company
 Idaho Falls, ID 83404
 While this is a photographic
 reproduction of the recorded
 plat, the company assumes
 no liability for variations,
 if any, with a re-survey.

Found Brass Cap
 C.P.A.F. Instrument
 Number 46625

SUNROCC DEVELOPMENT, L.P. (UNPLATTED)
 HETTERE DIVISION



CURVE TABLE				
CURVE	ARC	RADIUS	DELTA	CHORD
C1	78.06	50.00	89°27'18"	70.37
C2	79.02	50.00	89°32'42"	71.05
				CHORD BEARING
				N44°22'21"E
				N45°37'39"E