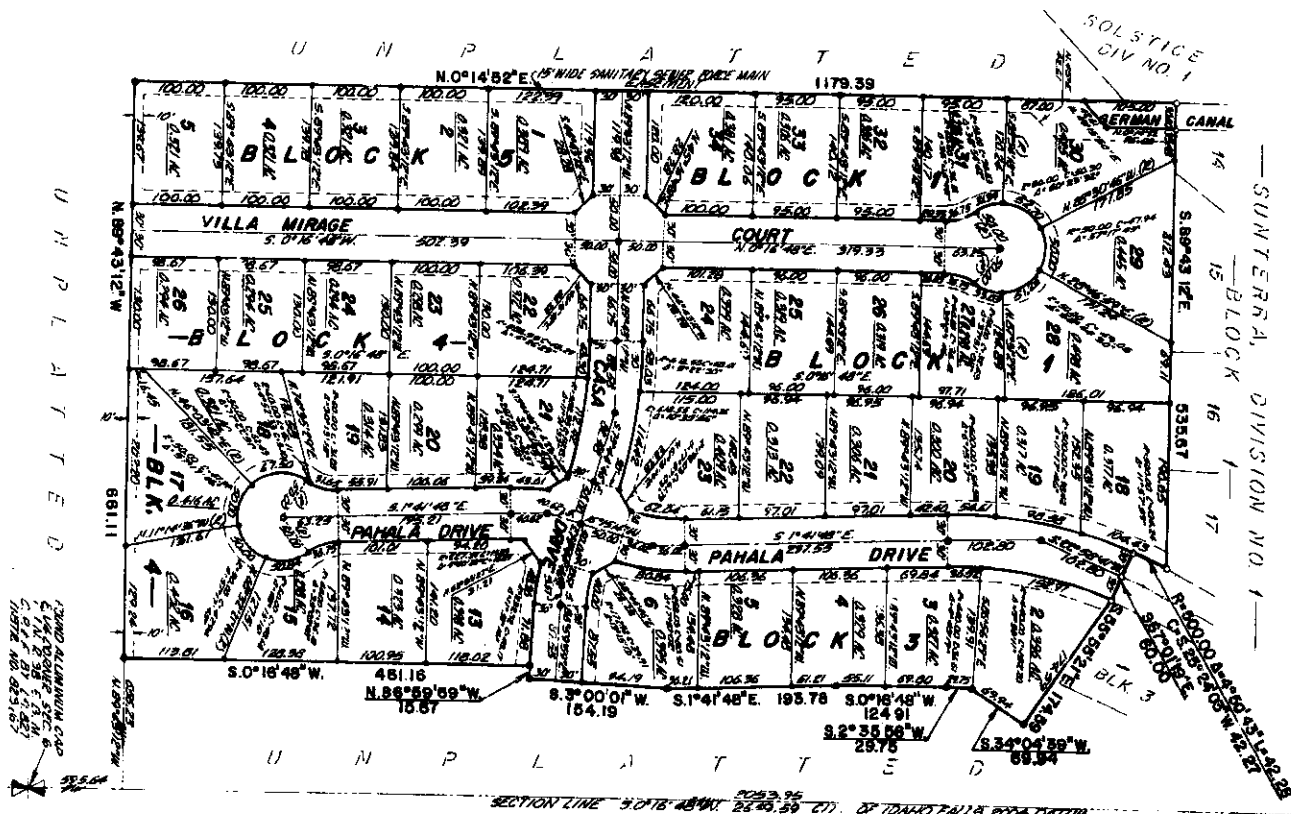


**SUNTERRA**  
**DIVISION NO. 2**  
 AN ADDITION TO THE CITY OF IDAHO FALLS,  
 BONNEVILLE COUNTY, IDAHO  
 BEING PART OF GOVT LOT 1 AND THE SE 1/4 RE1/4 SEC 3 T.14 N. R.38 E. & M.



RECORD CITY BEING CAP  
 T.14 N. R.38 E. M.  
 BEING PART OF GOVT LOT 1 AND THE SE 1/4 RE1/4 SEC 3 T.14 N. R.38 E. & M.

**LEGEND & NOTES**

- 5/8" 1.37" Steel ruler set with joints cap stamped 1.37/5
  - 1/2" 1.37" Steel ruler set with joints cap stamped 1.37/5
  - 5/8" Steel ruler fixed with joints cap stamped 1.37/5
  - 1/2" Steel ruler fixed with joints cap stamped 1.37/5
- A Notice has been filed with the Public Utility Commission of Idaho, regarding the use of this plat for utility purposes. The notice is on file with the Public Utility Commission, Boise, Idaho.

First American Title Company  
 Idaho Falls, ID 83404

While this is a photographic reproduction of the recorded plat, the company assumes no liability for variations, if any, with a re-survey.

7/20/2014  
 C. L. ROYER, SEC. B  
 C. L. ROYER, SEC. B  
 IDAHO TITLE NO. 251567