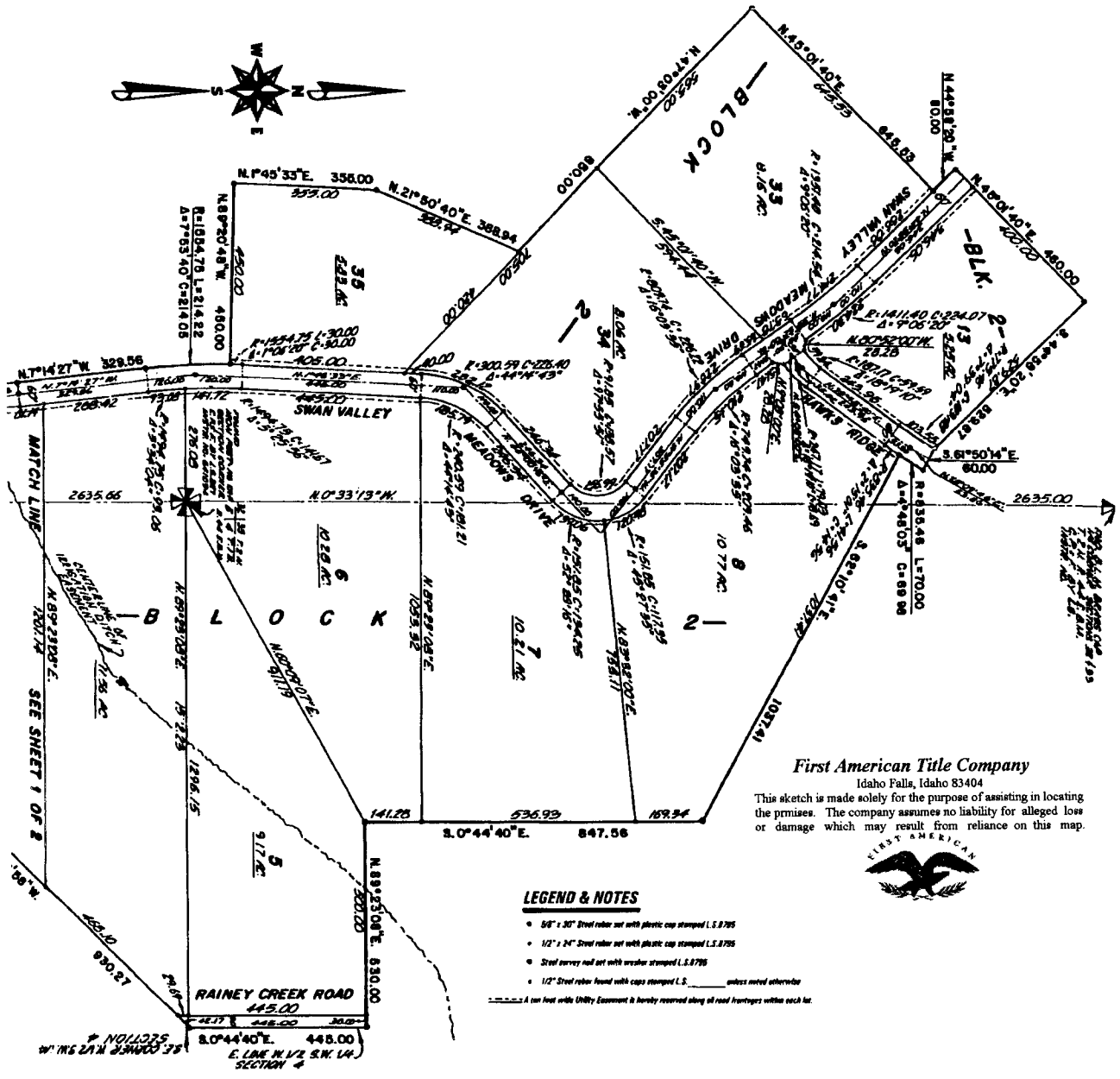


**SWAN VALLEY MEADOWS  
DIVISION NO. 1**  
AN ADDITION TO THE CITY OF SWAN VALLEY,  
BONNEVILLE COUNTY, IDAHO  
IN GOVT LOT 4 OF SEC. 4 AND THE S.1/2 N.E. 1/4 AND GOVT LOT 1 OF SEC. 5 T.1 N. R. 44 E. B. M.  
E. 1/2 S.E. 1/4 SEC. 32, W. 1/2 S.W. 1/4 SEC. 33 T. 2 N. R. 44 E. B. M.



**First American Title Company**

Idaho Falls, Idaho 83404

This sketch is made solely for the purpose of assisting in locating the premises. The company assumes no liability for alleged loss or damage which may result from reliance on this map.



**LEGEND & NOTES**

- 6" x 30" Steel rebar set with plastic cap stamped L.S. 8795
  - 1/2" x 24" Steel rebar set with plastic cap stamped L.S. 8795
  - Steel survey rod set with washer stamped L.S. 8795
  - 1/2" Steel rebar found with caps stamped L.S. \_\_\_\_\_ unless noted otherwise
- A set back with Utility Easement is hereby reserved along all road frontages within each lot.

# SWAN VALLEY MEADOWS DIVISION NO. 1

## AN ADDITION TO THE CITY OF SWAN VALLEY, BONNEVILLE COUNTY, IDAHO

IN GOVT LOT 4 OF SEC. 4 AND THE S. 1/2 N.E. 1/4 AND GOVT LOT 1 OF SEC. 5 T.1 N. R. 44 E.B.M.  
E. 1/2 S.E. 1/4 SEC. 32, W. 1/2 S.W. 1/4 SEC. 33 T.2 N. R. 44 E.B.M.

### PAGE - 2



**First American Title Company**

Idaho Falls, Idaho 83404

This sketch is made solely for the purpose of assisting in locating the premises. The company assumes no liability for alleged loss or damage which may result from reliance on this map.



**LEGEND & NOTES**

- 50" x 30" Steel rebar set with plastic cap stamped L.S. 8785
  - 12" x 24" Steel rebar set with plastic cap stamped L.S. 8786
  - Steel survey nail set with weather stamped L.S. 8788
  - 12" Steel rebar found with caps stamped L.S. \_\_\_\_\_ unless noted otherwise
- A run foot with Utility Easement is hereby reserved along all road frontages within each lot.
- This division contains 18 lots. (7.11 acre coverage lot size.)