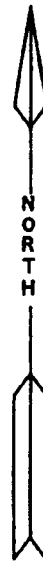
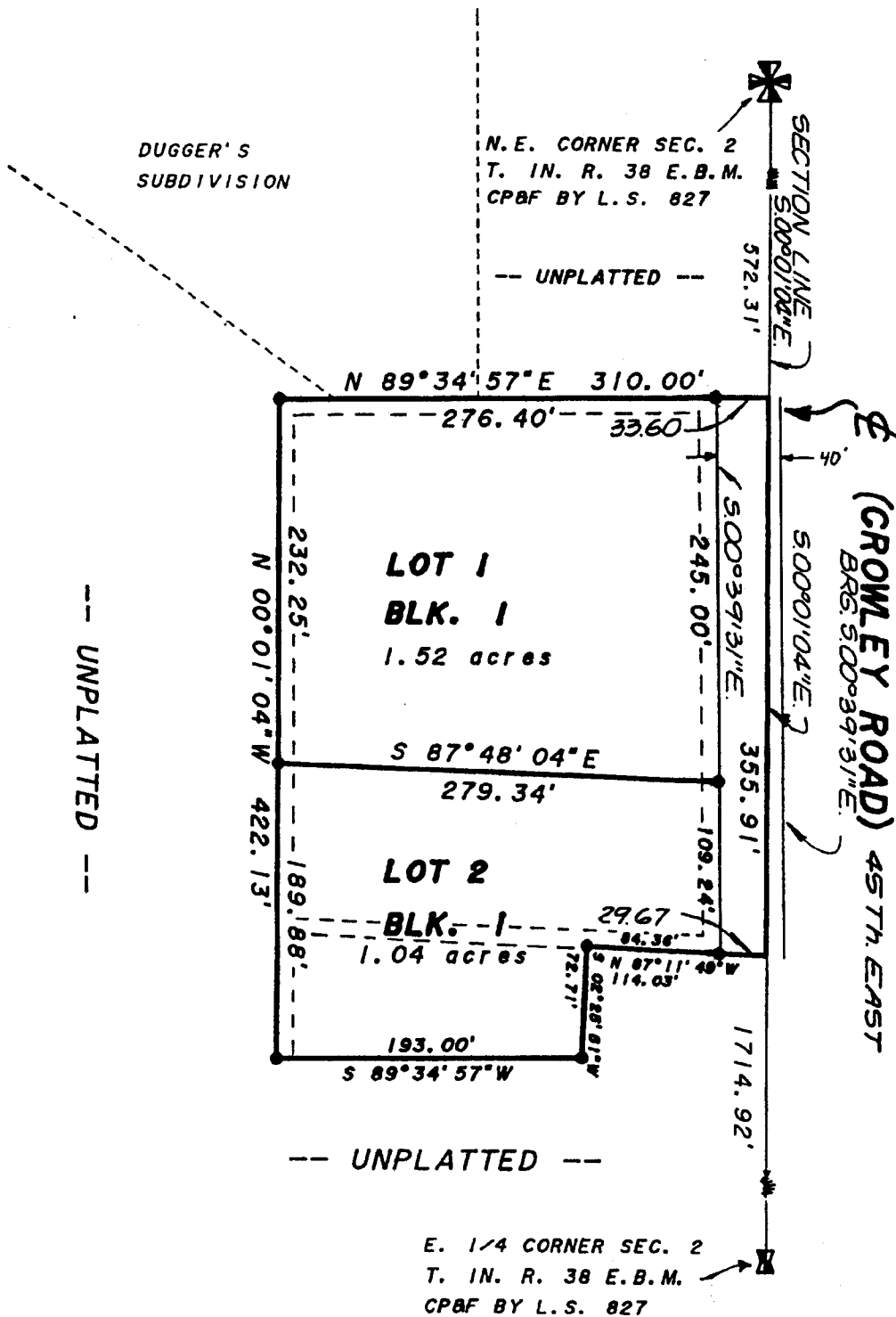


# TAWZER SUBDIVISION

## DIVISION NO. 1

BONNEVILLE COUNTY, IDAHO

A PORTION OF THE N.E. 1/4 OF SECTION 2, T. 1N. R. 38, E.B.M.



First American Title Company

Idaho Falls, Idaho 83404

This sketch is made solely for the purpose of assisting in locating the premises. The company assumes no liability for alleged loss or damage which may result from reliance on this map.

