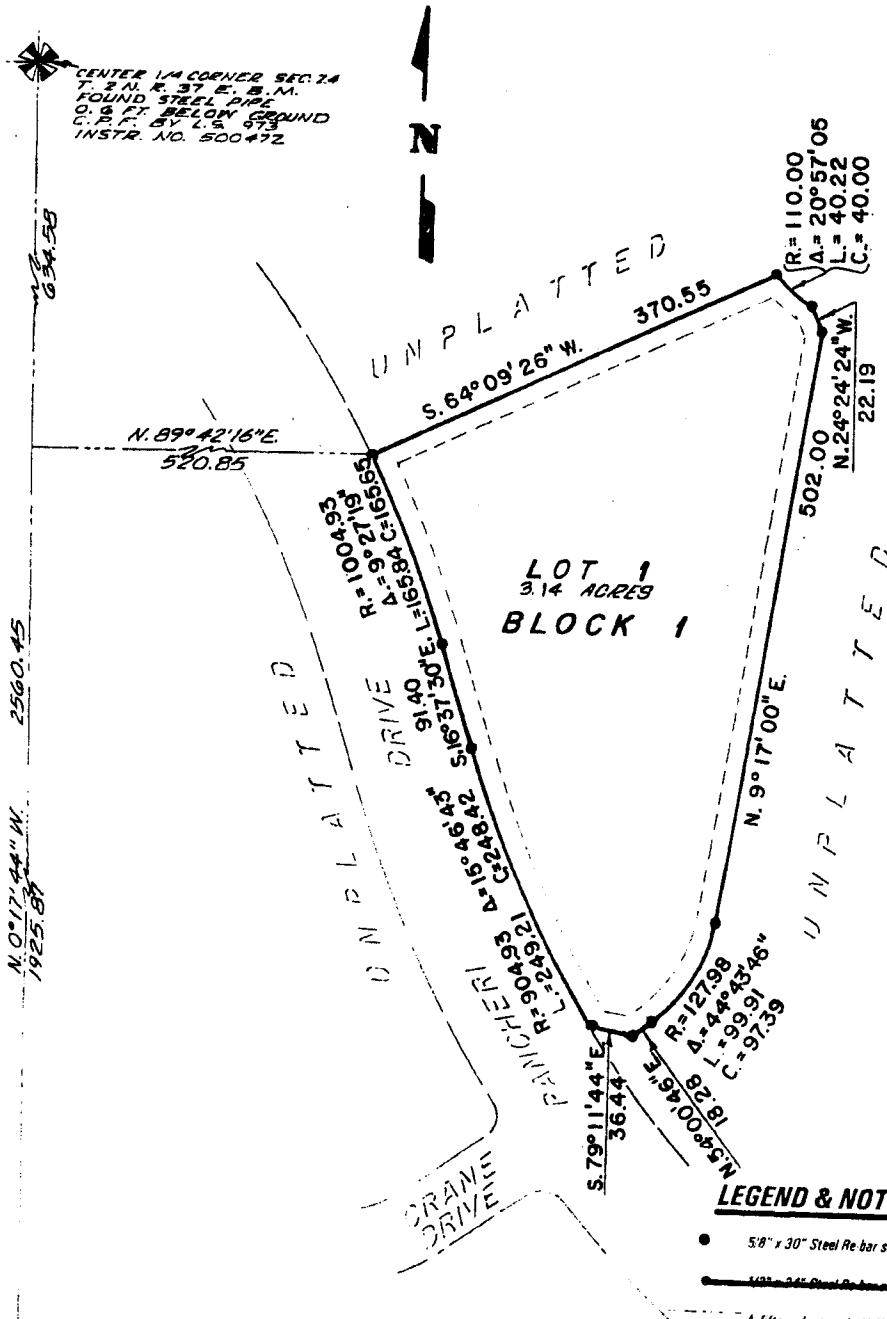


TAYLOR CROSSING "ON THE RIVER" DIVISION NO. 1

AN ADDITION TO THE CITY OF IDAHO FALLS,
BONNEVILLE COUNTY, IDAHO
BEING PART OF THE S.E. 1/4 OF SECTION 24, T. 2 N. R. 37 E., B. M.



First American Title Company
Idaho Falls, Idaho 83404

This sketch is made solely for the purpose of assisting in locating the premises. The company assumes no liability for alleged loss or damage which may result from reliance on this map.



LEGEND & NOTES

● 5/8" x 30" Steel Re-bar set with plastic cap stamped L S 8795

— 1/2" x 24" Steel Re-bar set with plastic cap stamped L S 8796

A fifteen foot wide Utility Easement is hereby granted along the perimeter of each lot. All other easement widths are as shown.

S. 1/4 CORNER SEC. 24
T. 2 N. R. 37 E. B. M.
CORNER NOT FOUND
C.P.F. BY L.S. 750
INSTR. NO. 742187

MEASURED CORNER ON THE
LEFT BANK OF SMALL RIVER
3 LINE SECTION 24 T. 2 N. R. 37 E. B. M.
FOUND ALUMINUM CAP
C.P.F. BY L.S. 827
INSTR. NO. 001968

1302.40
N. 89° 25' 52" E.