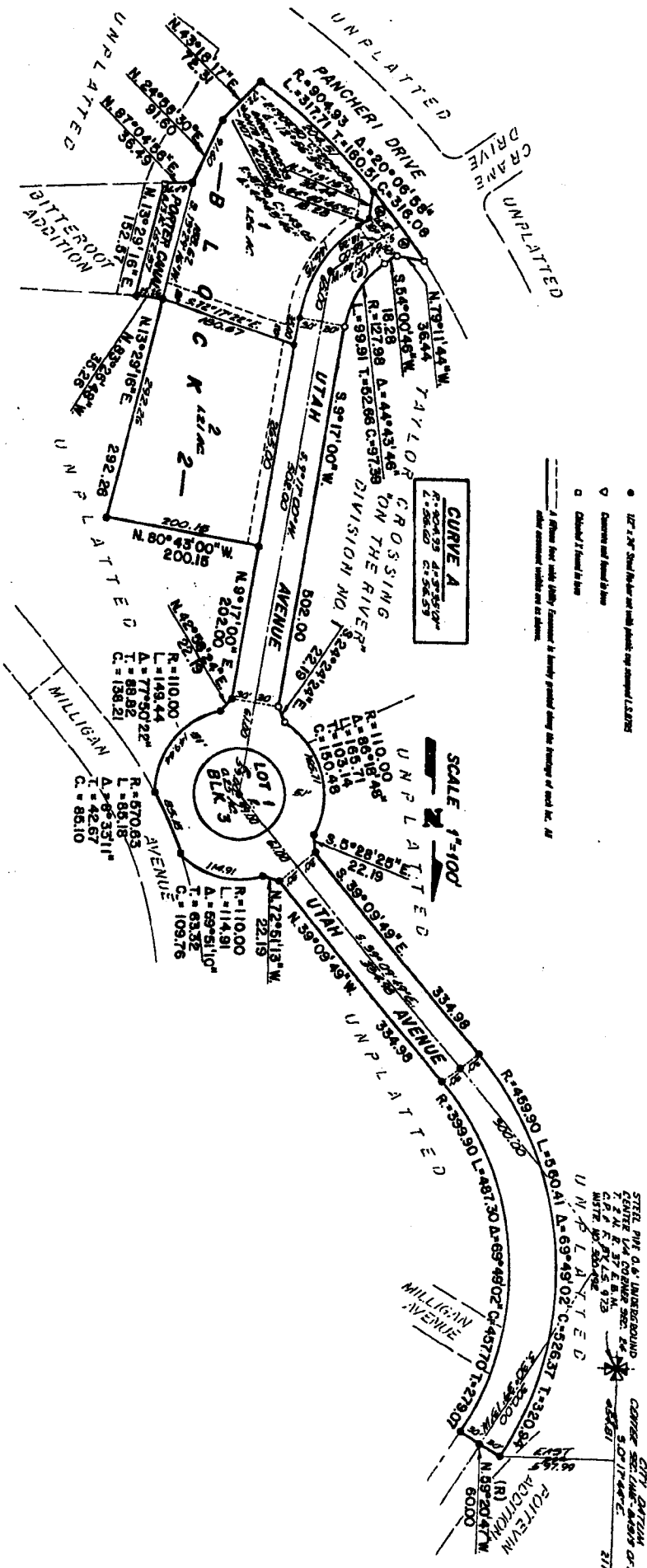


TAYLOR CROSSING "ON THE RIVER" DIVISION NO. 2

AN ADDITION TO THE CITY OF IDAHO FALLS
BONNEVILLE COUNTY, IDAHO
BEING PART OF THE EAST 1/2 OF SECTION 24 T 2 N. R 37 E. B. M.
INCLUDING A REPLAT OF A PART OF MILLIGAN AVENUE



First American Title Company
 Idaho Falls, Idaho 83404

This sketch is made solely for the purpose of assisting in locating the premises. The company assumes no liability for alleged loss or damage which may result from reliance on this map.

