

TAYLOR CROSSING "ON THE RIVER"

DIVISION NO. 3

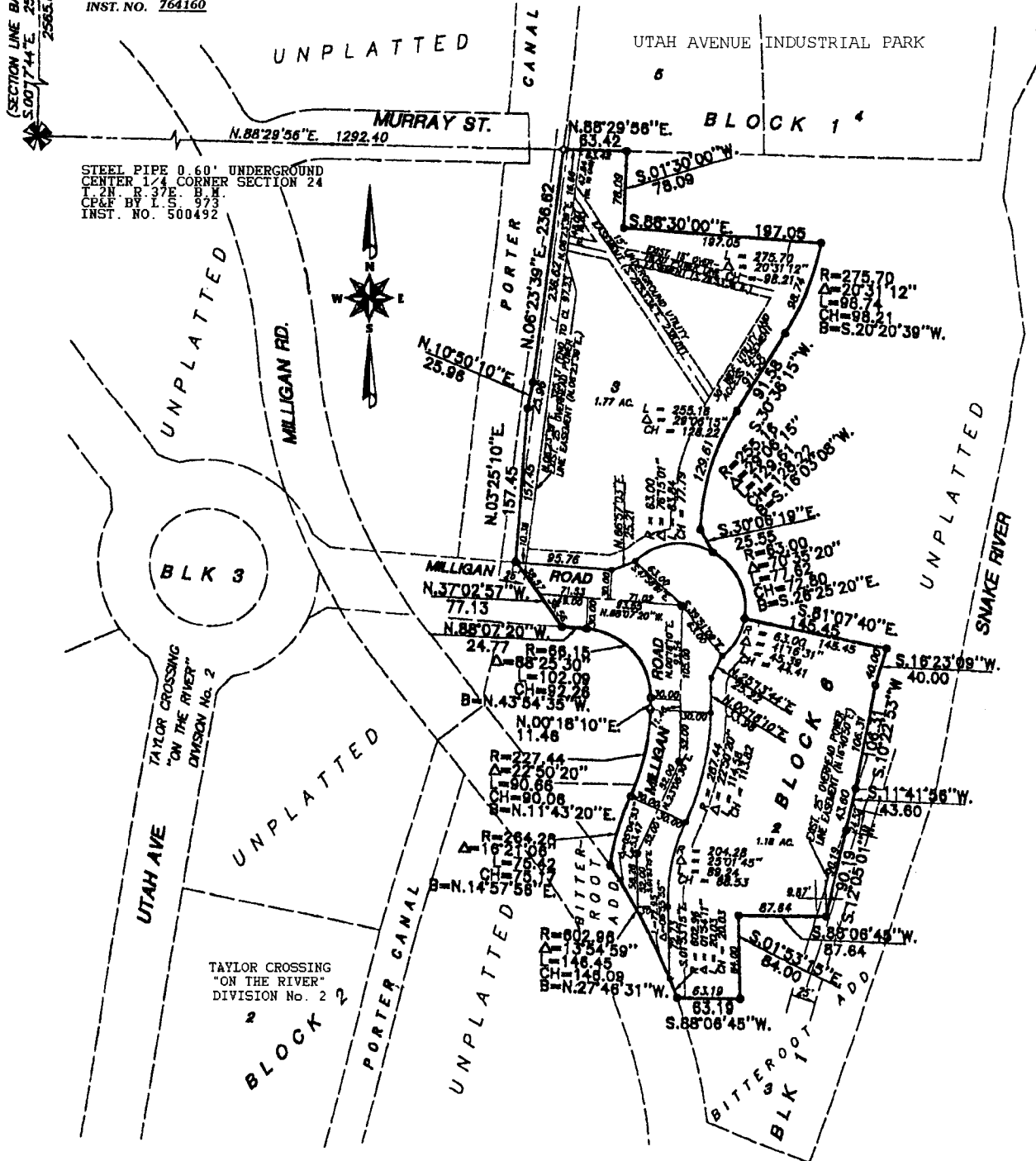
AN ADDITION TO THE CITY OF IDAHO FALLS
BONNEVILLE COUNTY, IDAHO

Being a part of the S.E. 1/4 of Section 24, T. 2 N. R. 37 E.B.M.
Including a RePlat of Lot 3, Block 1 of the BITTERROOT ADDITION

(SECTION LINE BASIS OF BEARING)
S.007°14'E. 2583.26 (CITY DATUM)
2583.63

FND CITY OF IDAHO FALLS
BRASS CAP MONUMENT
N. 1/4 CORNER SEC. 24
T. 2 N. R. 37 E.B.M.
C.P. & F. BY L.S. 973
INST. NO. 764160

STEEL PIPE 0.60' UNDERGROUND
CENTER 1/4 CORNER SECTION 24
T. 2 N. R. 37 E.B.M.
C.P. & F. BY L.S. 973
INST. NO. 500492



First American Title Company
Idaho Falls, Idaho 83404

This sketch is made solely for the purpose of assisting in locating the premises. The company assumes no liability for alleged loss or damage which may result from reliance on this map.



LEGEND & NOTES

- 5/8" x 30" Steel Re-Bar set with plastic cap stamped L.S. 8795
- 1/2" x 24" Steel Re-Bar set with plastic cap stamped L.S. 8795
- 1/2" Steel Re-Bar found with plastic cap stamped L.S. 8795

A fifteen foot wide Utility Easement is hereby granted along the frontage of each lot. All other easement widths are as shown.