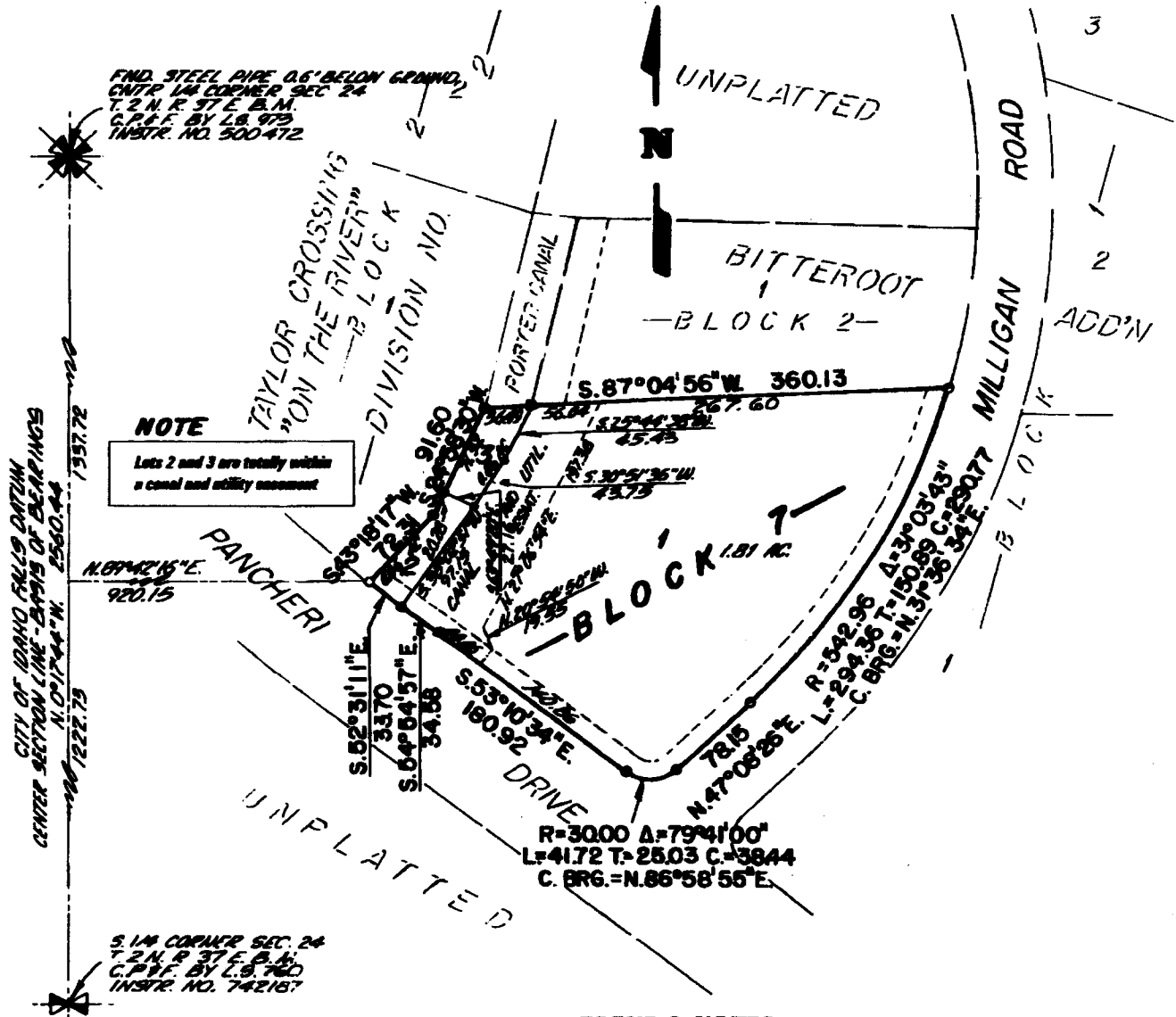


# TAYLOR CROSSING "ON THE RIVER" DIVISION NO. 6

AN ADDITION TO THE CITY OF IDAHO FALLS  
BONNEVILLE COUNTY, IDAHO

BEING PART OF THE S.E. 1/4 OF SECTION 24, T. 2 N. R. 37 E., B. M.



First American Title Company  
Idaho Falls, Idaho 83404

While this is a photographic reproduction of the recorded plat, the Company assumes no liability for variations, if any, with a re-survey.