

FOUND CITY OF IDAHO FALLS
BRASS CAP MONUMENT
N 1/4 COR. SECTION 24
T.2N. R.37E. B.M.
CP&F BY L.S. 973
INSTR. No. 764160

SECTION LINE-BASIS OF BEARING
CITY OF IDAHO FALLS DATUM . P.C. & C. 11.14
S0071'44"E 2565.63

TAYLOR CROSSING 'ON THE RIVER'

DIVISION NO. 7

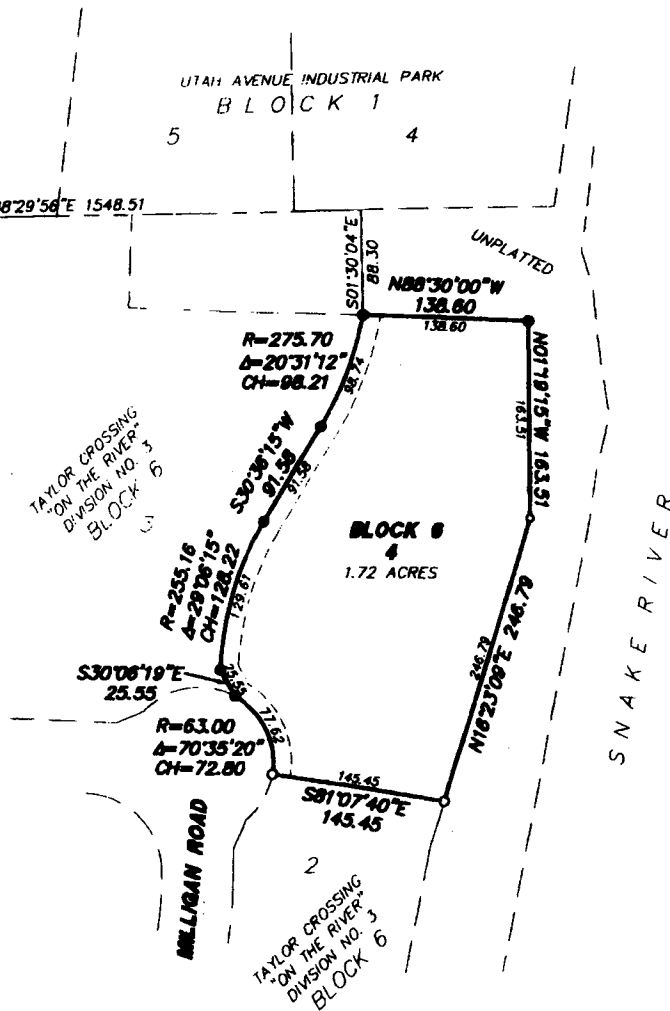
AN ADDITION TO THE CITY OF IDAHO FALLS, BONNEVILLE COUNTY, IDAHO

BEING PART OF THE S.E. 1/4 OF SECTION 24, T.2N. R.37E. B.M.



STEEL PIPE 0.6' UNDERGROUND
CENTER 1/4 COR. SECTION 24
T.2N. R.37E. B.M.
CP&F BY L.S. 973
INSTR. No. 500492

First American Title Company
Idaho Falls, Idaho 83404
While this is a photographic
reproduction of the recorded
plat, the Company assumes no
liability for variations,
if any, with a re-survey.



LEGEND & NOTES

- 5/8" x 30" Steel rebar set with plastic cap stamped L.S. 8795
- 5/8" Steel rebar found with caps stamped L.S. 8795
- 1/2" Steel rebar found with caps stamped L.S. 3842
- Found chiseled 'X' in concrete

A 16-foot wide Utility Easement is hereby granted/reserved along all road frontages within each lot