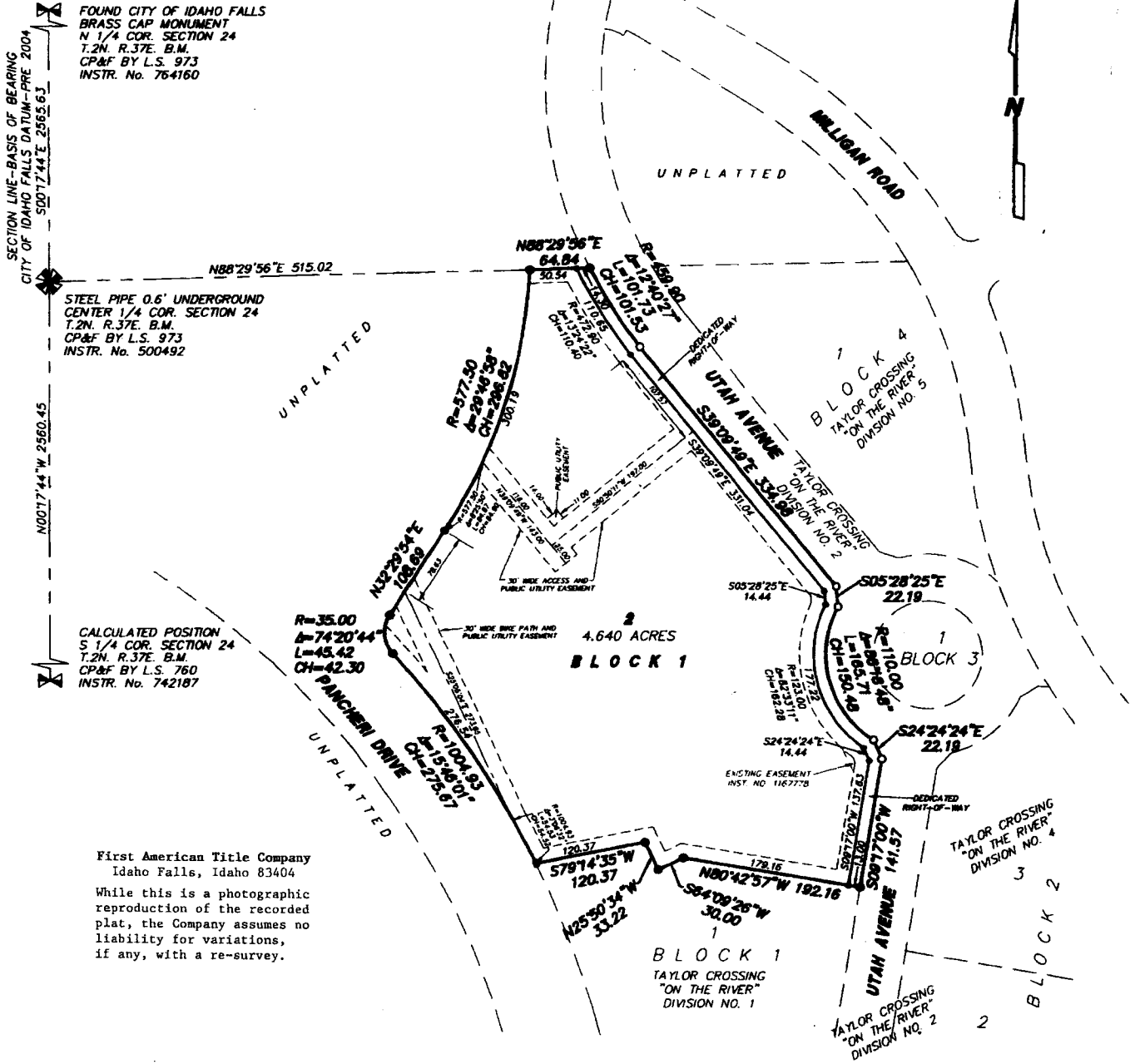


TAYLOR CROSSING 'ON THE RIVER'

DIVISION NO. 8

AN ADDITION TO THE CITY OF IDAHO FALLS,
BONNEVILLE COUNTY, IDAHO

BEING A REPLAT OF A PORTION OF LOT 1, BLOCK 1, TAYLOR CROSSING 'ON THE RIVER', DIVISION NO. 1
LYING IN THE S.E. 1/4 OF SECTION 24, T.2N, R.37E, B.M.



FOUND CITY OF IDAHO FALLS
BRASS CAP MONUMENT
N 1/4 COR. SECTION 24
T.2N. R.37E. B.M.
CP&F BY L.S. 973
INSTR. No. 764160

STEEL PIPE 0.6' UNDERGROUND
CENTER 1/4 COR. SECTION 24
T.2N. R.37E. B.M.
CP&F BY L.S. 973
INSTR. No. 500492

CALCULATED POSITION
S 1/4 COR. SECTION 24
T.2N. R.37E. B.M.
CP&F BY L.S. 760
INSTR. No. 742187

First American Title Company
Idaho Falls, Idaho 83404
While this is a photographic
reproduction of the recorded
plat, the Company assumes no
liability for variations,
if any, with a re-survey.

LEGEND & NOTES

- 5/8" x 30" Steel rebar set with plastic cap stamped L.S. 8795
 - 1/2" x 24" Steel rebar set with plastic cap stamped L.S. 8795
 - 5/8" Steel rebar found with caps stamped L.S. 8795
- A fifteen foot wide Utility Easement is hereby granted/reserved along all road frontages within each lot. All other easements are fifteen feet wide unless noted otherwise.