

UNIVERSITY PARK ADDITION

DIVISION NO. 1

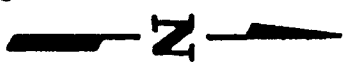
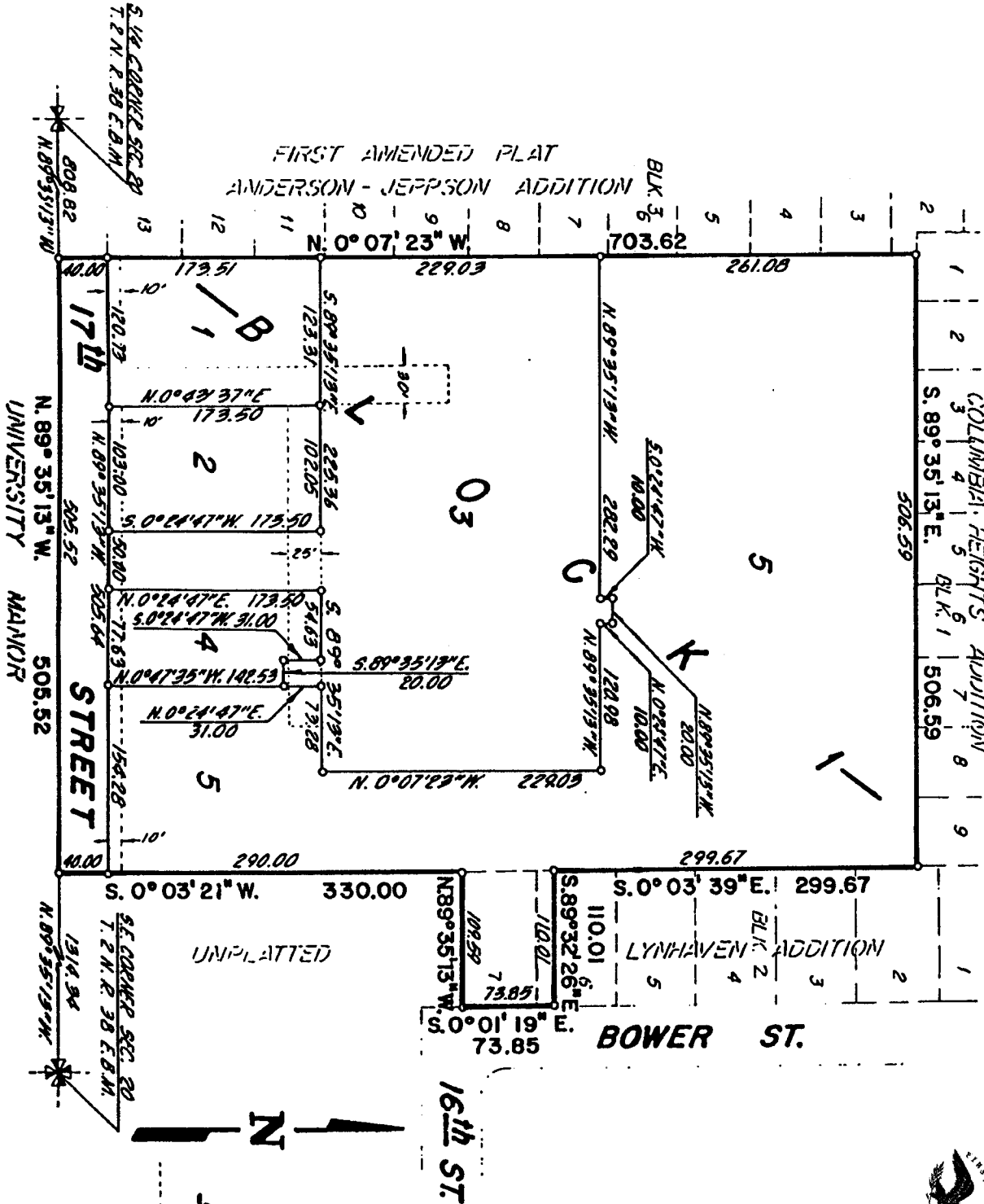
IN THE CITY OF IDAHO FALLS, BONNEVILLE COUNTY, IDAHO
 A PART OF THE SE 1/4 OF SECTION 20 T 2 N. R. 38 E. B.M.
 AND A PART OF LOTS 6 AND 7 BLOCK 2 OF THE LYNHAVEN ADDITION
 ELLSWORTH ENGINEERING, INC.
 RAND FIELDS, IDAHO

First American Title Company
 Idaho Falls, Idaho 83404

This sketch is made solely for the purpose of assisting in locating the premises. The company assumes no liability for alleged loss or damage which may result from reliance on this map



FIRST AMENDED PLAT ANDERSON - JEPSON ADDITION



NOTES
 • Denotes Iron Rods
 --- Basements Widths as shown