

TETON INDUSTRIAL PARK

DIVISION NO. 1

BOONVILLE COUNTY, IDAHO
PART OF THE SECTION 2, T.1 N., R.37E., B.M.

First American Title Company

Idaho Falls, Idaho 83404

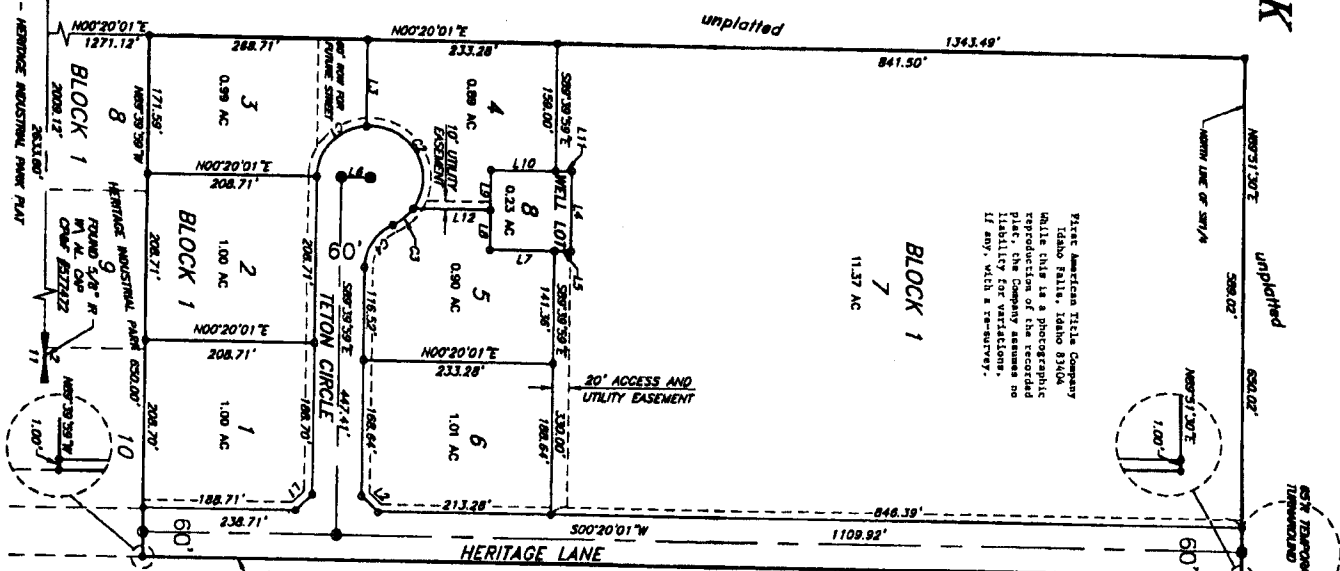
This sketch is made solely for the purpose of assisting in locating the premises. The company assumes no liability for alleged loss or damage which may result from reliance on this map.



LINE	DIRECTION	DISTANCE
L1	N44°29'59"W	28.20'
L2	N42°20'01"E	28.20'
L3	S89°29'59"E	108.78'
L4	S89°29'59"E	108.78'
L5	S00°20'01"W	210.00'
L6	S00°20'01"W	210.00'
L7	S00°20'01"W	210.00'
L8	N89°29'59"W	50.00'
L9	N89°29'59"W	50.00'
L10	N00°20'01"E	60.00'
L11	N00°20'01"E	25.00'
L12	N00°20'01"E	25.12'

LEGEND

--- Section corner
 --- Placed 5/8" x 3/8" iron rod with cap removed P.L.S. 6863
 --- Placed 1/2" x 3/4" iron rod with cap removed P.L.S. 6863
 --- Utility monuments are 10" wide along the thickness of all blocks approved by the plat after construction.



1" STRIP TO BE DEDICATED TO BOONVILLE COUNTY, SEE DEVELOPMENT AGREEMENT

CHAIN	READS	LENGTH	INCHES	CHORD	BEARING	DETA
C1	68.00	148.17	68.10	68.10	S46°32'20"E	68.10
C2	68.00	148.17	68.10	68.10	S00°13'15"E	68.10
C3	68.00	148.17	68.10	68.10	S87°43'08"E	68.10
C4	68.00	148.17	68.10	68.10	S00°13'15"E	68.10



ROUND LANE
CHAMBERLAIN
BASIS OF BEARING - HERITAGE INDUSTRIAL PARK PLAN