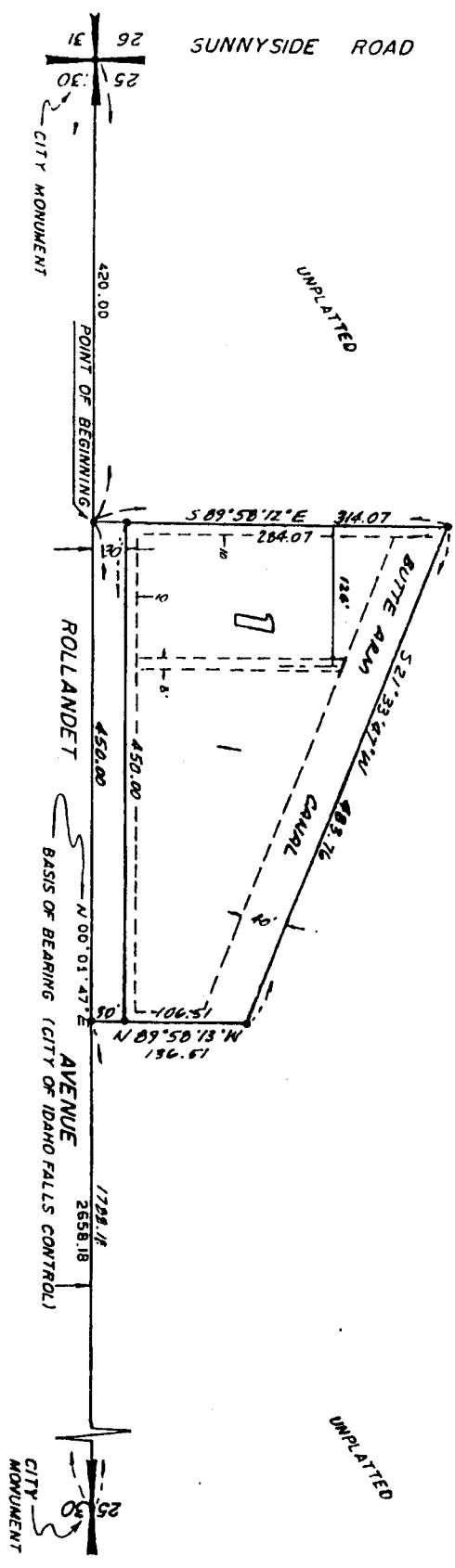


THAYER BRIDGE




DIVISION NO. 1

AN ADDITION TO THE CITY OF IDAHO FALLS, BONNEVILLE COUNTY, IDAHO
PART OF THE S. E. 1/4 OF SECTION 25, TOWNSHIP 2 NORTH, RANGE 37 EAST, B.M.

UNPLATTED



LEGEND

-  Section control corners
 -  Placed 1/2" iron rod with cap
 -  Marked P.L.S. 4563
- All utility easements are 15' wide unless otherwise noted.

This sketch is made solely for the purpose of assisting in locating the premises. The company assumes no liability for alleged loss or damage which may result from reliance on this map.



First American Title Company
Idaho Falls, Idaho 83404