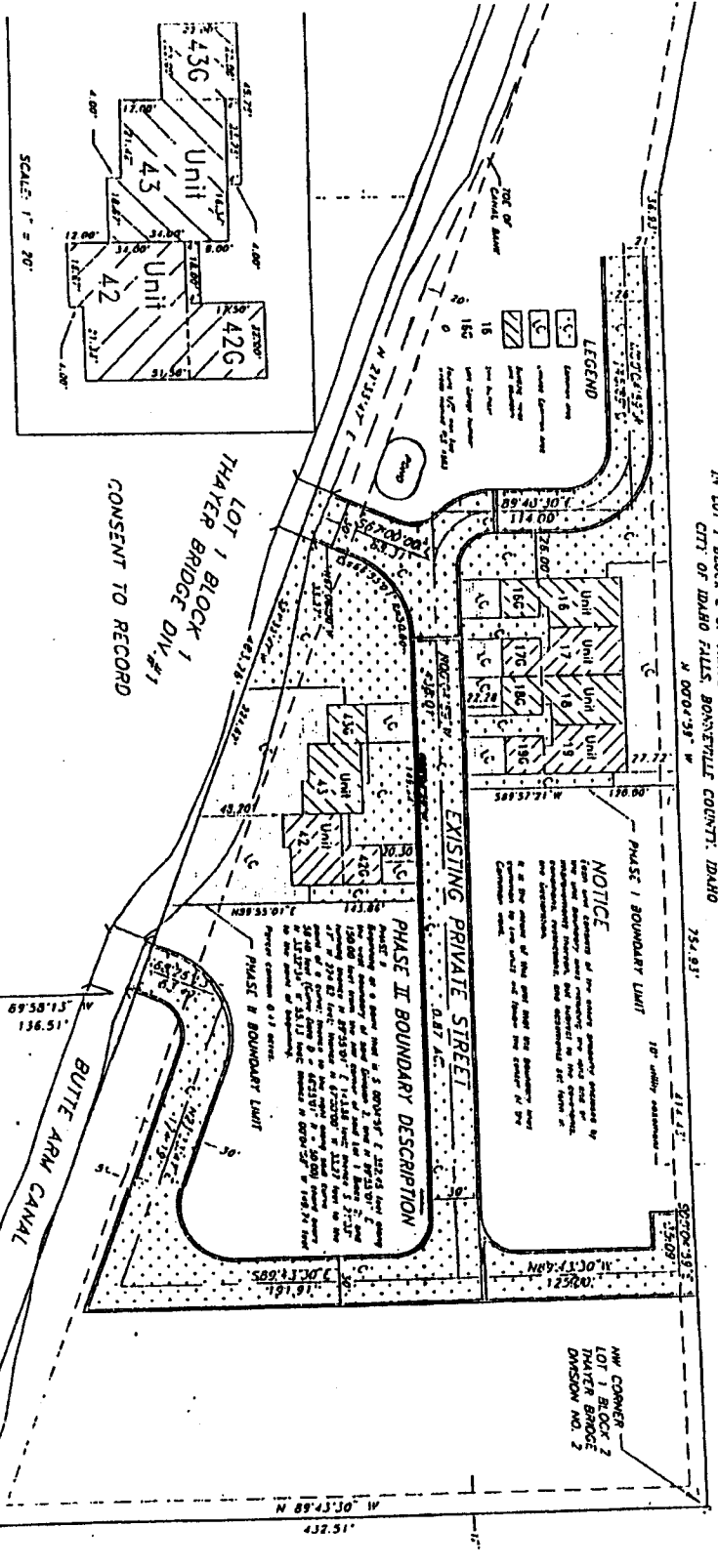




THAYER BRIDGE DIVISION NO. 2 TOWNHOUSES PHASE II

PART OF SECTION 25 TOWNSHIP 2 NORTH, RANGE 37 EAST S.M.
IN LOT 1 BLOCK 2 OF THAYER BRIDGE DIVISION NO. 2 TO THE
CITY OF IDAHO FALLS, BONNEVILLE COUNTY, IDAHO



First American Tile Company
Idaho Falls, Idaho 83404

This sketch is made solely for the purpose of assisting in locating the premises. The company assumes no liability for alleged loss or damage which may result from reliance on this map.