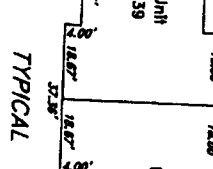
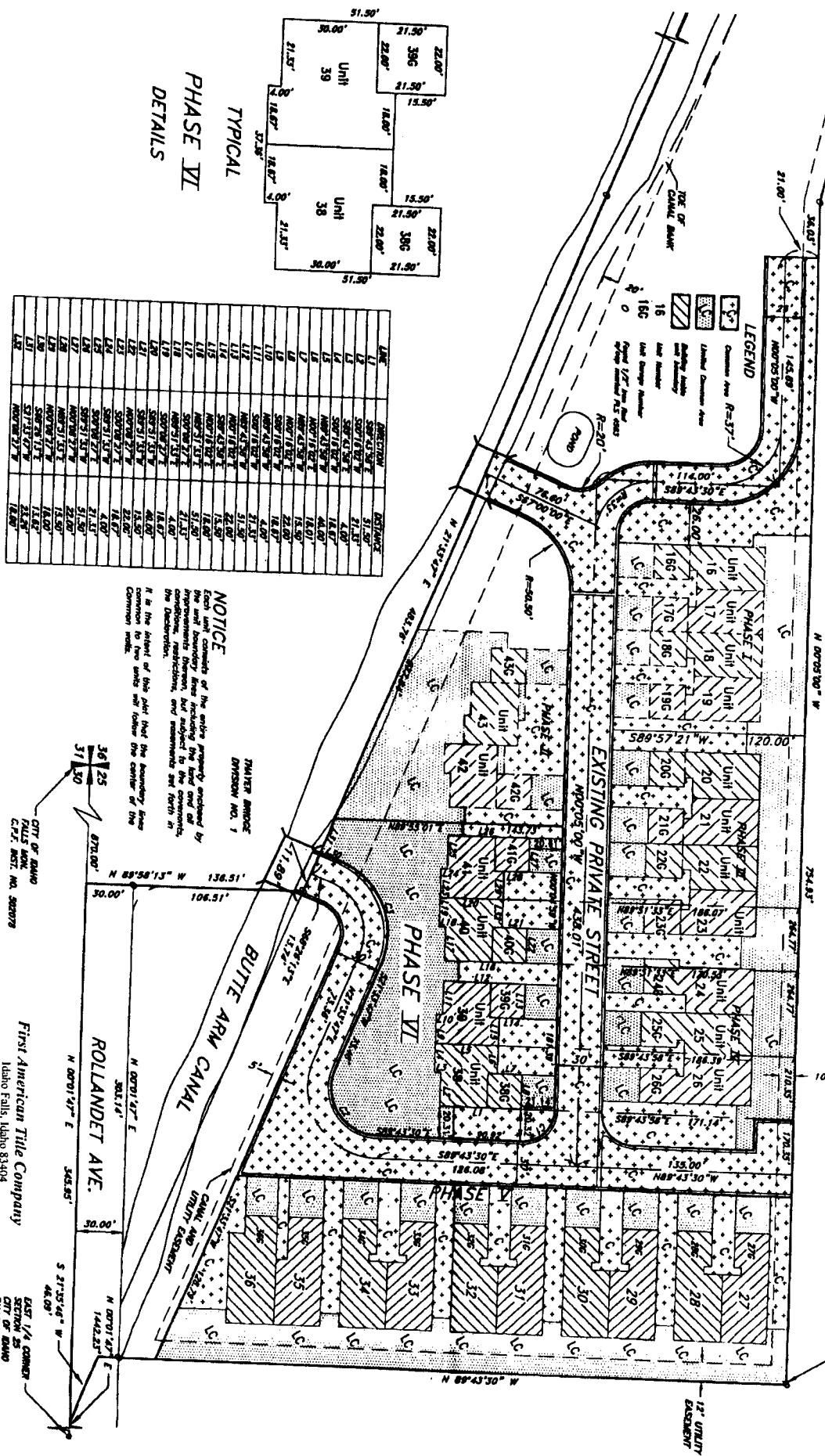




# EXHIBIT "A"

## THAYER BRIDGE DIVISION NO. 2

IN SECTION 26 TOWNSHIP 2 NORTH, RANGE 37 EAST B.M.,  
PART OF LOT 1 BLOCK 2 OF THAYER BRIDGE DIVISION NO. 2 TO THE  
CITY OF IDAHO FALLS, BONNEVILLE COUNTY, IDAHO



TYPICAL  
PHASE VI  
DETAILS

LINE	DIRECTION	DISTANCE
L1	S89°41'30" E	21.50'
L2	S00°16'00" W	21.50'
L3	S00°16'00" W	4.00'
L4	S00°16'00" W	18.00'
L5	N00°13'00" W	48.00'
L6	N00°13'00" W	18.00'
L7	N00°13'00" W	18.00'
L8	N00°13'00" W	4.00'
L9	S00°16'00" W	18.00'
L10	S00°16'00" W	22.00'
L11	S00°16'00" W	4.00'
L12	N00°13'00" W	18.00'
L13	N00°13'00" W	15.50'
L14	S00°16'00" W	18.00'
L15	N00°13'00" W	18.00'
L16	S00°16'00" W	21.50'
L17	S00°16'00" W	4.00'
L18	N00°13'00" W	4.00'
L19	S00°16'00" W	48.00'
L20	S00°16'00" W	48.00'
L21	S00°16'00" W	22.00'
L22	S00°16'00" W	22.00'
L23	S00°16'00" W	18.00'
L24	S00°16'00" W	21.50'
L25	S00°16'00" W	22.00'
L26	N00°13'00" W	18.00'
L27	N00°13'00" W	18.00'
L28	N00°13'00" W	18.00'
L29	S00°16'00" W	18.00'
L30	S00°16'00" W	22.00'
L31	S00°16'00" W	22.00'
L32	S00°16'00" W	18.00'
L33	S00°16'00" W	18.00'
L34	S00°16'00" W	18.00'
L35	S00°16'00" W	18.00'
L36	S00°16'00" W	18.00'

**NOTICE**  
Each unit consists of the entire property enclosed by the unit boundary line including any improvements thereon, but subject to the provisions of the plat, the subdivision, and amendments set forth in the subdivision.  
It is the intent of this plat that the boundary lines conform to two units and follow the center of the common wall.

CURTAIN	WALLS	LINENET	TRASHBOX	CLOSET	BREAKING	BATH
C1	24.00'	11.00'	24.00'	24.00'	24.00'	24.00'
C2	24.00'	11.00'	24.00'	24.00'	24.00'	24.00'
C3	24.00'	11.00'	24.00'	24.00'	24.00'	24.00'

First American Title Company  
Idaho Falls, Idaho 83404



This sketch is made solely for the purpose of assisting in locating the premises. The company assumes no liability for alleged loss or damage which may result from reliance on this map.

FIRST AMERICAN  
TITLE COMPANY  
IDaho FALLS, IDAHO  
CITY OF IDAHO  
CITY OF IDAHO  
CITY OF IDAHO