

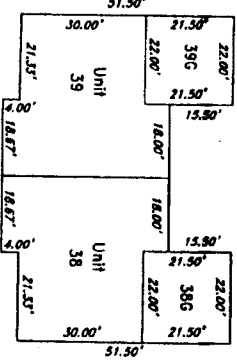
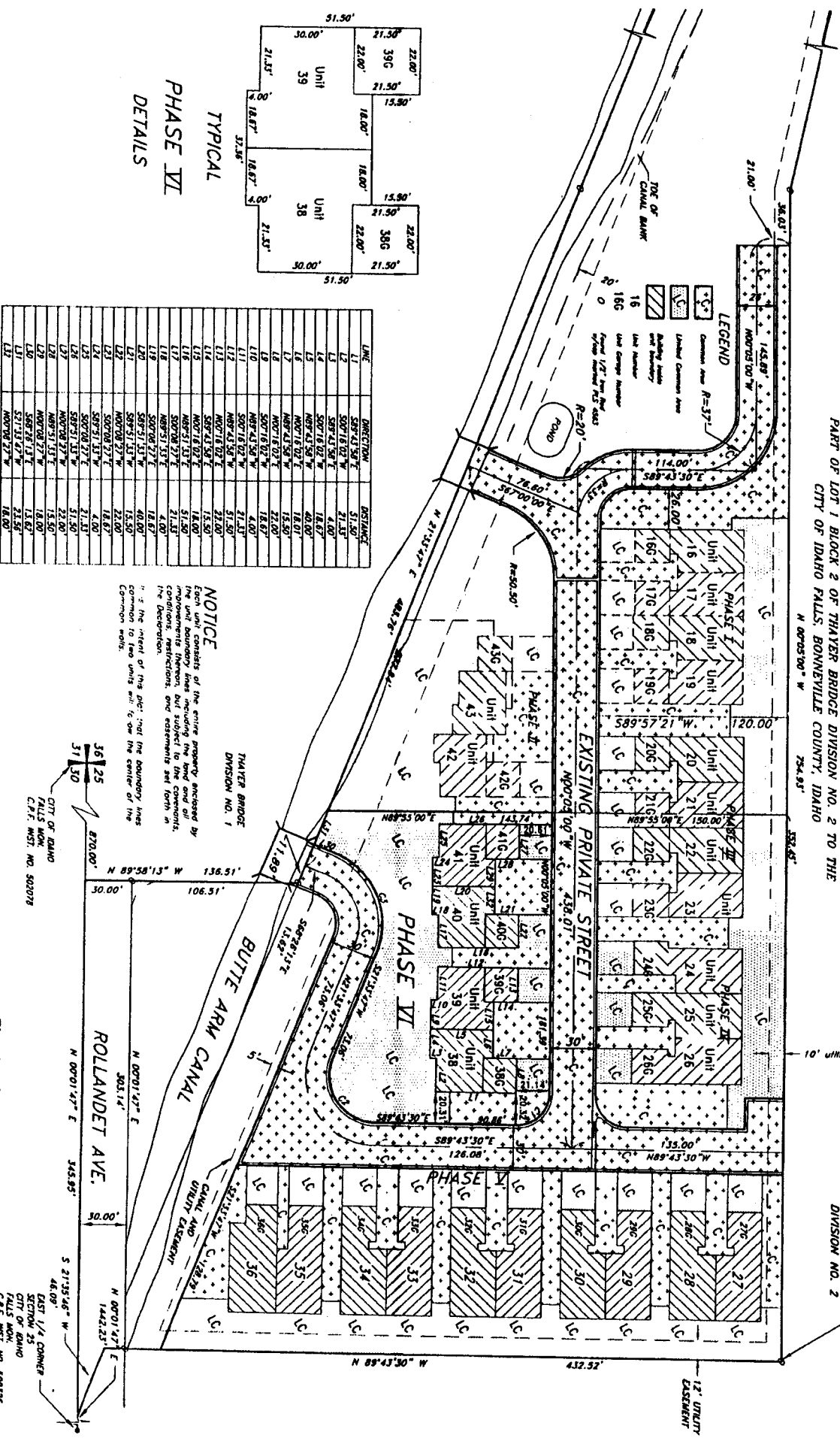


FIRST AMENDED EXHIBIT "A"

THAYER BRIDGE DIVISION NO. 2

TOWNHOUSES PHASE VI

IN SECTION 25 TOWNSHIP 2 NORTH, RANGE 37 EAST B.M.,
PART OF LOT 1 BLOCK 2 OF THAYER BRIDGE DIVISION NO. 2 TO THE
CITY OF IDAHO FALLS, BONNEVILLE COUNTY, IDAHO



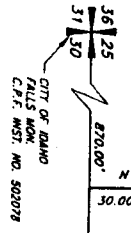
TYPICAL
PHASE VI
DETAILS

LINE	DIRECTION	DISTANCE
L1	S89°43'58"E	51.50'
L2	S00°16'02"W	21.50'
L3	S89°43'58"E	4.00'
L4	S00°16'02"W	18.67'
L5	N89°51'53"E	40.00'
L6	N00°08'27"W	18.67'
L7	N89°51'53"E	18.67'
L8	N00°16'02"E	18.67'
L9	N89°43'58"W	4.00'
L10	S00°16'02"W	21.50'
L11	S00°16'02"E	21.50'
L12	N89°43'58"W	51.50'
L13	N00°16'02"E	15.50'
L14	S89°43'58"E	18.67'
L15	N89°51'53"E	18.67'
L16	N00°16'02"E	18.67'
L17	S00°16'02"E	21.50'
L18	N89°51'53"E	4.00'
L19	S00°16'02"E	18.67'
L20	N89°43'58"W	18.67'
L21	S00°16'02"E	18.67'
L22	N00°08'27"W	22.00'
L23	S00°16'02"E	18.67'
L24	S89°51'53"W	4.00'
L25	S00°16'02"E	21.50'
L26	S89°51'53"W	22.00'
L27	N00°08'27"W	22.00'
L28	N89°51'53"E	15.50'
L29	N00°08'27"W	18.67'
L30	S89°51'53"E	13.62'
L31	S21°33'47"W	23.58'
L32	N00°08'27"W	18.67'

NOTICE

Each unit consists of the entire property, enclosed by the boundary lines including the front and all sides, as shown on this plan. The owner shall be responsible for all conditions, restrictions, and easements set forth in the Declaration.

1. The effect of this plan and the boundary lines common to two units shall be on the center of the common walls.



CHAIN	RAUNDS	LENGTH	TANGENT	CURVE	BEARING	AREA
C1	20.00	51.50'	28.37'	N45°03'43"E	80721.50'	
C2	20.00	58.87'	48.81'	S24°04'51"E	117171.72'	
C3	20.00	78.50'	70.71'	S33°08'13"E	167000.00'	

First American Tile Company
Idaho Falls, Idaho 83404

This sketch is made solely for the purpose of assisting in locating the premises. The company assumes no liability for alleged loss or damage which may result from reliance on this map.



EAST 1/4 CORNER
SECTION 25
CITY OF IDAHO
C.P.F. M.S.T. NO. 500236