

TIE BREAKER VILLAGE DIVISION NO. 10

INCLUDING A REPLAT OF PART OF LOT 5 BLOCK 5 AND LOT 10 BLOCK 6 DIVISION NO. 2 TIE BREAKER VILLAGE
CITY OF AMMON, BONNEVILLE COUNTY, IDAHO

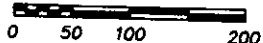
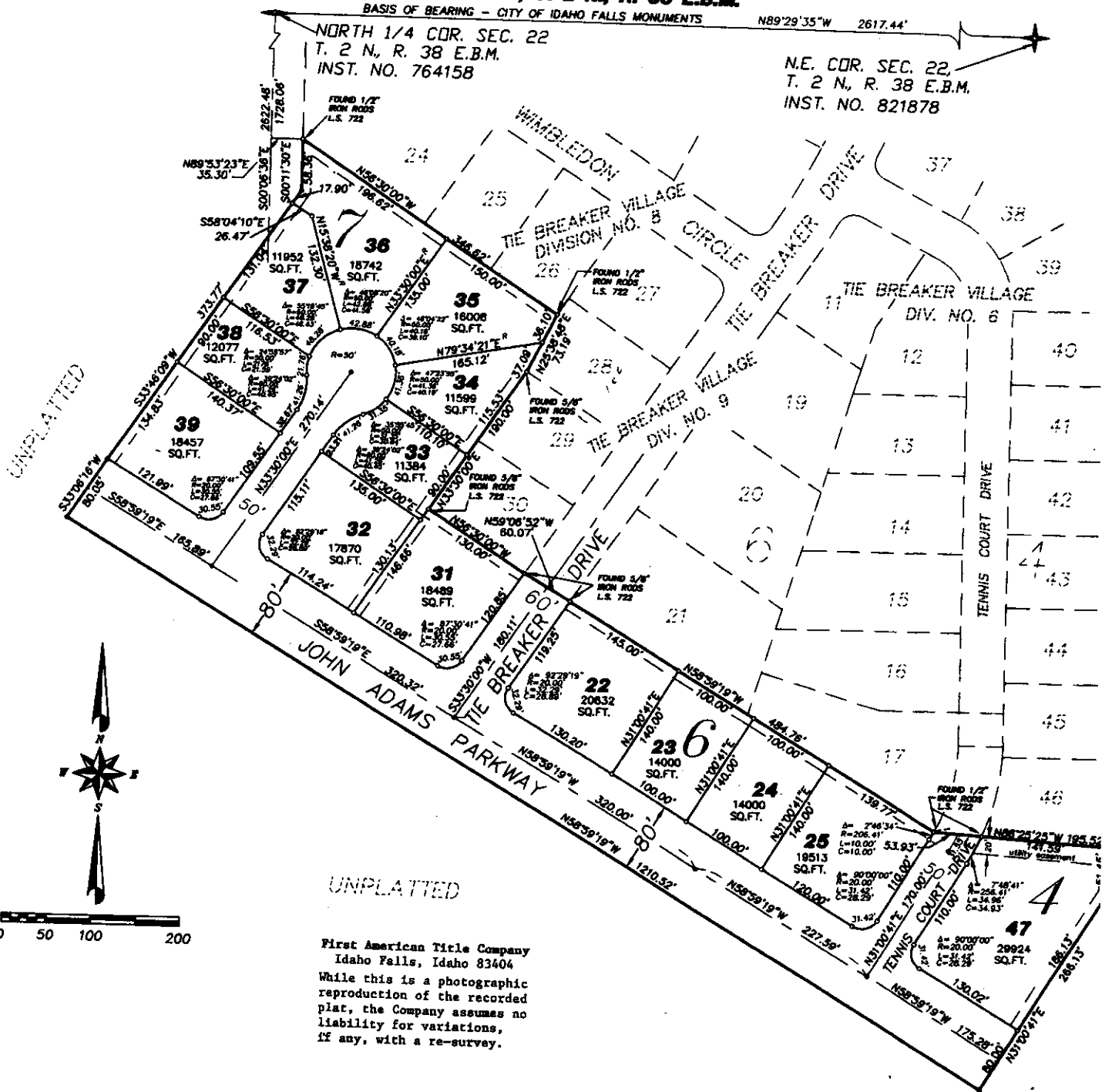
PART OF SEC. 22, T. 2 N., R. 38 E.B.M.

BASIS OF BEARING - CITY OF IDAHO FALLS MONUMENTS

N89°29'35"W 2617.44'

NORTH 1/4 COR. SEC. 22
T. 2 N., R. 38 E.B.M.
INST. NO. 764158

N.E. COR. SEC. 22,
T. 2 N., R. 38 E.B.M.
INST. NO. 821878



UNPLATTED

First American Title Company
Idaho Falls, Idaho 83404
While this is a photographic
reproduction of the recorded
plat, the Company assumes no
liability for variations,
if any, with a re-survey.

NOTES

- indicates a 5/8" x 30" iron rod placed with a yellow plastic cap marked L.S. 722.
- - - indicates a 1/2" x 24" iron rod placed with a yellow plastic cap marked L.S. 722.
- utility easements are 8' thru each lot unless otherwise shown.
- a 10' wide utility easement is reserved along the street side of all lots.