

TIE BREAKER VILLAGE DIVISION NO. 10

INCLUDING A REPLAT OF PART OF LOT 5 BLOCK 5 AND LOT 10 BLOCK 6 DIVISION NO. 2 TIE BREAKER VILLAGE
CITY OF AMMON, BONNEVILLE COUNTY, IDAHO

First American Title Company

Idaho Falls, Idaho 83404

This sketch is made solely for the purpose of assisting in locating the premises. The company assumes no liability for alleged loss or damage which may result from reliance on this map.



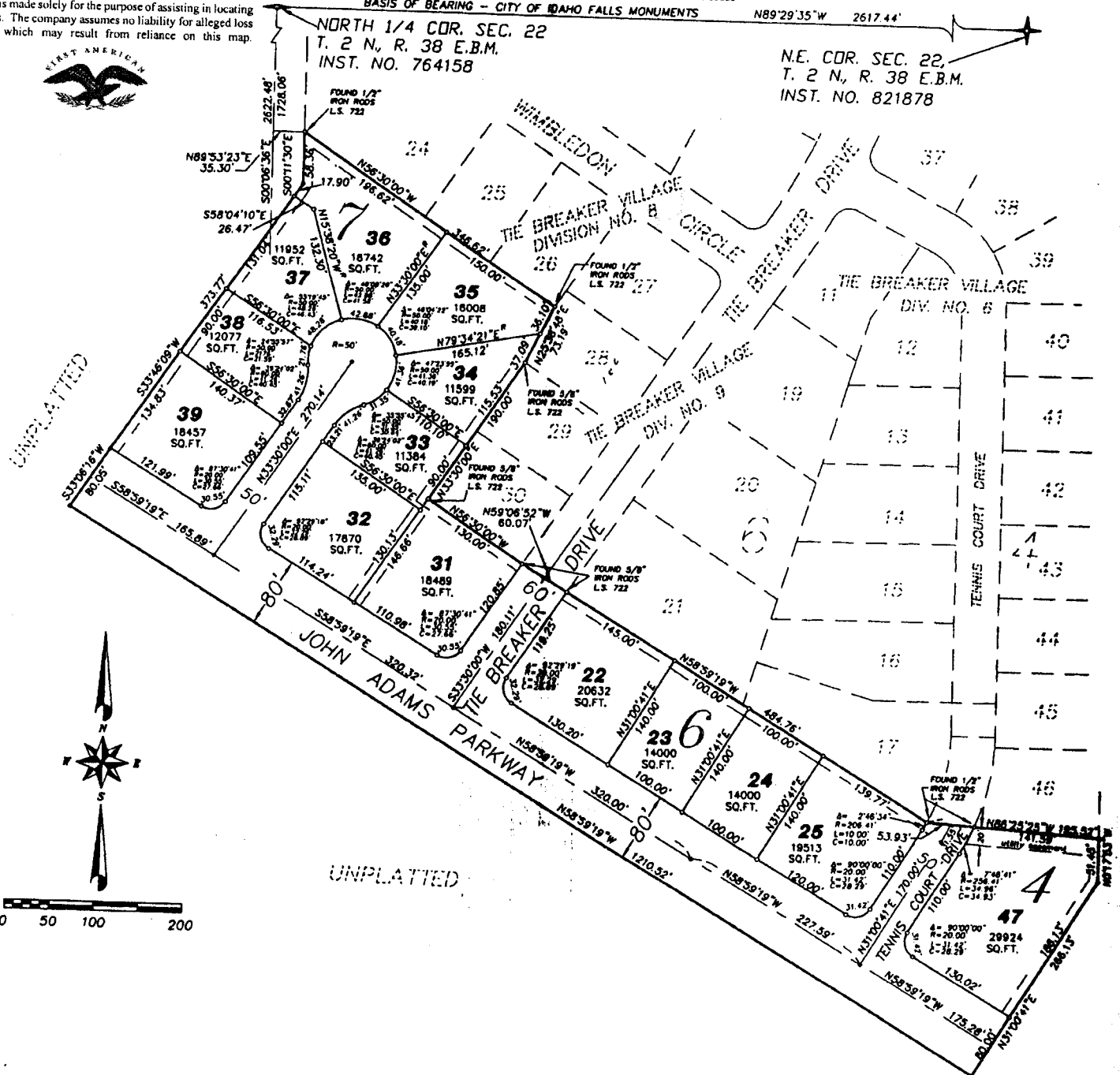
PART OF SEC. 22, T. 2 N., R. 38 E.B.M.

BASIS OF BEARING - CITY OF IDAHO FALLS MONUMENTS

N89°29'35"W 2617.44'

NORTH 1/4 COR. SEC. 22
T. 2 N., R. 38 E.B.M.
INST. NO. 764158

N.E. COR. SEC. 22,
T. 2 N., R. 38 E.B.M.
INST. NO. 821878



NOTES



indicates a 5/8" x 30" iron rod placed with a yellow plastic cap marked L.S. 722.

indicates a 1/2" x 24" iron rod placed with a yellow plastic cap marked L.S. 722.

utility easements are 8' thru each lot unless otherwise shown.

a 10' wide utility easement is reserved along the street side of all lots.