

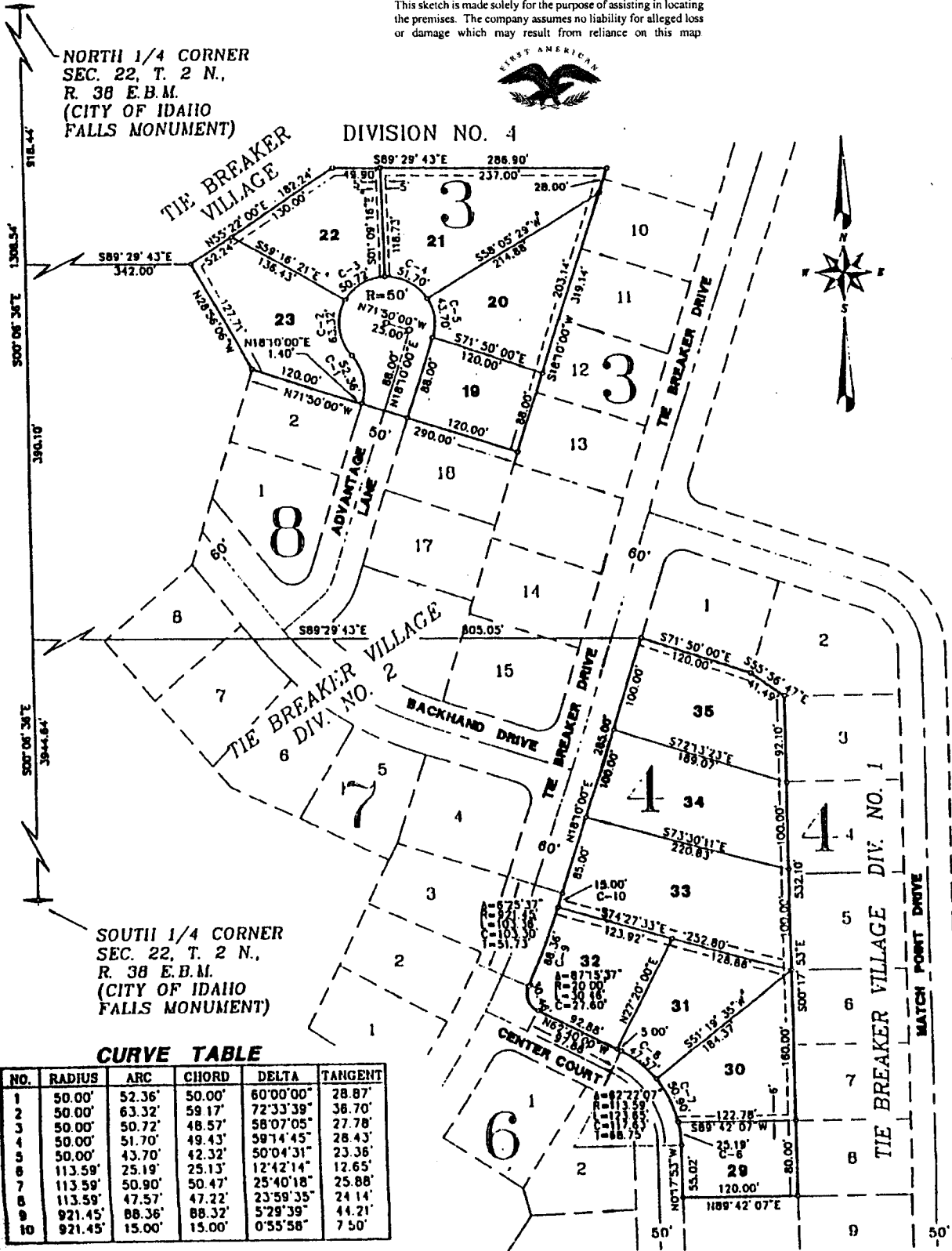
TIE BREAKER VILLAGE

DIVISION NO. 5

(INCLUDING A REPLAT OF LOTS 21 THRU 28,
BLOCK 4 OF TIE BREAKER VILLAGE, DIV. NO. 2)
TO THE CITY OF AMMON, BONNEVILLE COUNTY, IDAHO
PART OF THE WEST 1/2 OF THE N.E. 1/4 OF SEC. 22, T. 2 N., R. 38 E.B.M.

First American Title Company
Idaho Falls, Idaho 83404

This sketch is made solely for the purpose of assisting in locating
the premises. The company assumes no liability for alleged loss
or damage which may result from reliance on this map



NORTH 1/4 CORNER
SEC. 22, T. 2 N.,
R. 38 E.B.M.
(CITY OF IDAHO
FALLS MONUMENT)

DIVISION NO. 4

SOUTH 1/4 CORNER
SEC. 22, T. 2 N.,
R. 38 E.B.M.
(CITY OF IDAHO
FALLS MONUMENT)

CURVE TABLE

NO.	RADIUS	ARC	CHORD	DELTA	TANGENT
1	50.00'	52.36'	50.00'	60°00'00"	28.87'
2	50.00'	63.32'	59.17'	72°33'39"	38.70'
3	50.00'	50.72'	48.57'	58°07'05"	27.78'
4	50.00'	51.70'	49.43'	59°14'45"	28.43'
5	50.00'	43.70'	42.32'	50°04'31"	23.36'
6	113.59'	25.19'	25.13'	12°42'14"	12.65'
7	113.59'	50.90'	50.47'	25°40'18"	25.88'
8	113.59'	47.57'	47.22'	23°59'35"	24.14'
9	921.45'	88.36'	88.32'	5°29'39"	44.21'
10	921.45'	15.00'	15.00'	0°55'58"	7.50'