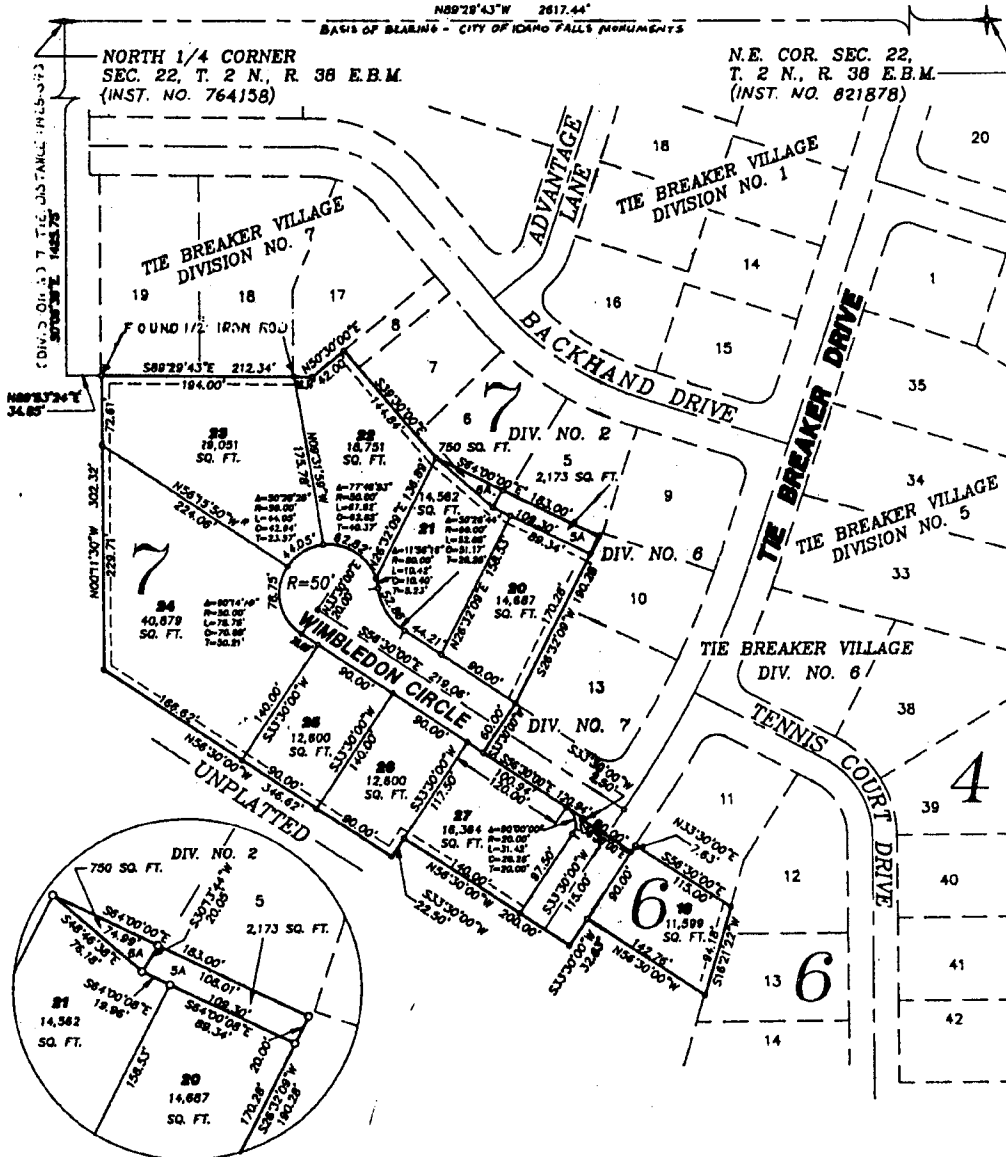


TIE BREAKER VILLAGE DIVISION NO. 8

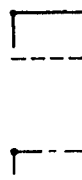
INCLUDING A REPLAT OF PART OF LOT 12, BLOCK 7,
DIVISION NO. 6, TIE BREAKER VILLAGE
CITY OF AMMON, BONNEVILLE COUNTY, IDAHO
PART OF THE WEST 1/2 OF THE N.E. 1/4 OF SEC. 22, T. 2 N., R. 38 E.B.M.

First American Title Company
Idaho Falls, Idaho 83404

This sketch is made solely for the purpose of assisting in locating the premises. The company assumes no liability for alleged loss or damage which may result from reliance on this map.



NOTES



- indicates a 1/2" x 24" iron rod placed with a yellow plastic cap marked L.S. 722.
- - - utility easements are 8' thru each lot unless otherwise shown.
- · - a 10' wide utility easement is reserved along the street side of all lots.
- · - indicates a street monument placed after construction.