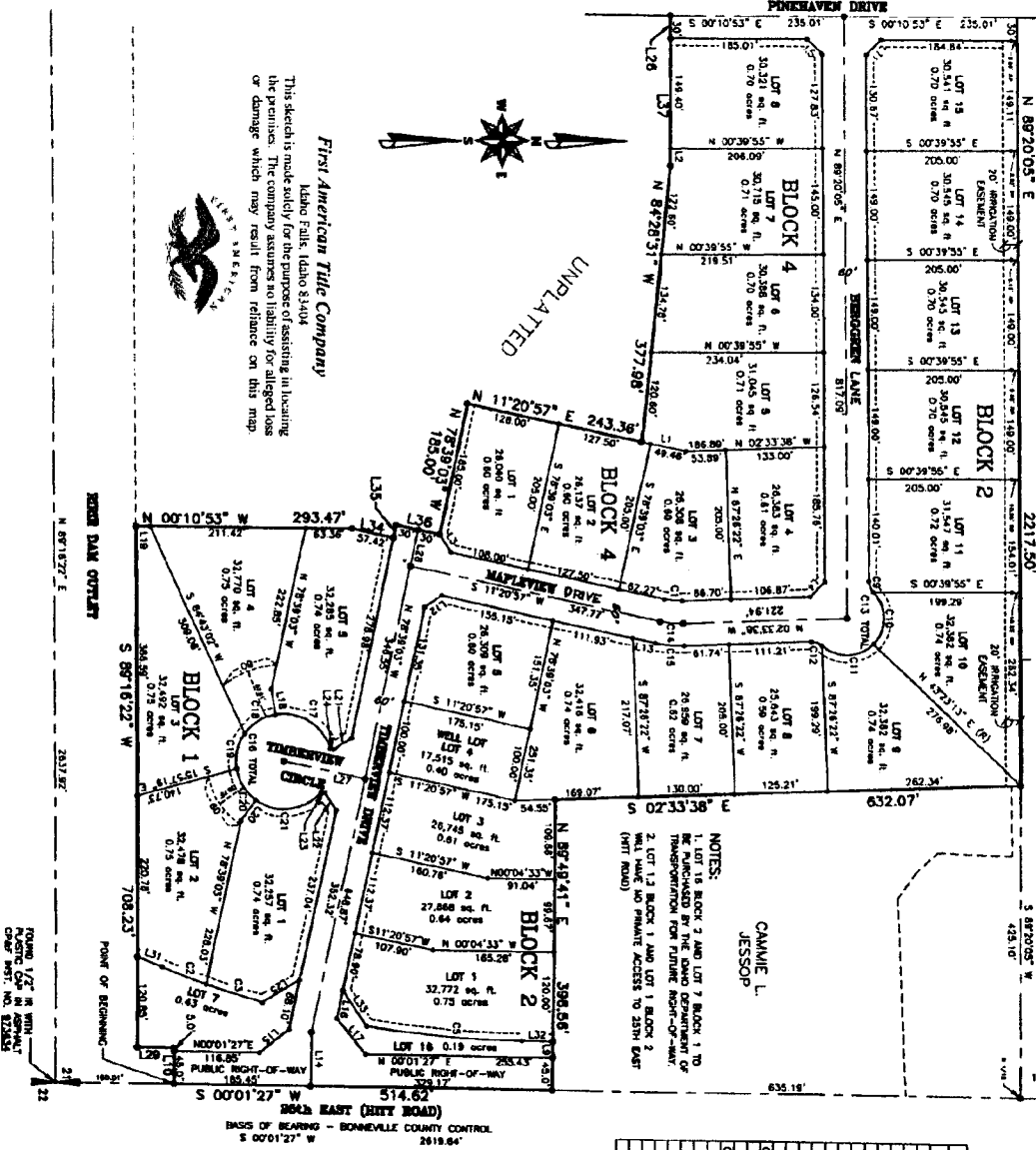


SHARON WILSON



First American Title Company
 Idaho Falls, Idaho 83404
 This sketch is made solely for the purpose of assisting in locating the premises. The company assumes no liability for alleged loss or damage which may result from reliance on this map.



NOTES:
 BLOCK 3 AND LOT 3 BLOCK 1 TO
 BE REMOVED BY THE OWNER OF THE
 TRANSPORTATION FOR FUTURE RIGHT-OF-WAY
 WILL HAVE NO PERMANENT ACCESS TO STATE ROAD
 (HIT ROAD)

CAMMIE L.
 JESSOP

FOUNDED 1877
 CAPITAL STOCK \$1,000,000

TIMBERLINE ESTATES
 DIVISION NO. 1

Part of the South 1/2 of the Northeast 1/4
 of Section 21, T. 3 N., R. 38 E., B.M.

Curve	Radius	Delta	Length	Chord Bearing	Chord Distance
C1	100.00'	134.33°	21.88'	N 62°13'51" E	64.32'
C2	100.00'	134.33°	21.88'	N 1°13'51" E	64.32'
C3	100.00'	134.33°	21.88'	N 1°13'51" E	64.32'
C4	100.00'	134.33°	21.88'	N 1°13'51" E	64.32'
C5	100.00'	134.33°	21.88'	N 1°13'51" E	64.32'
C6	100.00'	134.33°	21.88'	N 1°13'51" E	64.32'
C7	100.00'	134.33°	21.88'	N 1°13'51" E	64.32'
C8	100.00'	134.33°	21.88'	N 1°13'51" E	64.32'
C9	100.00'	134.33°	21.88'	N 1°13'51" E	64.32'
C10	100.00'	134.33°	21.88'	N 1°13'51" E	64.32'
C11	100.00'	134.33°	21.88'	N 1°13'51" E	64.32'
C12	100.00'	134.33°	21.88'	N 1°13'51" E	64.32'
C13	100.00'	134.33°	21.88'	N 1°13'51" E	64.32'
C14	100.00'	134.33°	21.88'	N 1°13'51" E	64.32'
C15	100.00'	134.33°	21.88'	N 1°13'51" E	64.32'
C16	100.00'	134.33°	21.88'	N 1°13'51" E	64.32'
C17	100.00'	134.33°	21.88'	N 1°13'51" E	64.32'
C18	100.00'	134.33°	21.88'	N 1°13'51" E	64.32'
C19	100.00'	134.33°	21.88'	N 1°13'51" E	64.32'
C20	100.00'	134.33°	21.88'	N 1°13'51" E	64.32'
C21	100.00'	134.33°	21.88'	N 1°13'51" E	64.32'
C22	100.00'	134.33°	21.88'	N 1°13'51" E	64.32'
C23	100.00'	134.33°	21.88'	N 1°13'51" E	64.32'
C24	100.00'	134.33°	21.88'	N 1°13'51" E	64.32'
C25	100.00'	134.33°	21.88'	N 1°13'51" E	64.32'
C26	100.00'	134.33°	21.88'	N 1°13'51" E	64.32'
C27	100.00'	134.33°	21.88'	N 1°13'51" E	64.32'
C28	100.00'	134.33°	21.88'	N 1°13'51" E	64.32'
C29	100.00'	134.33°	21.88'	N 1°13'51" E	64.32'
C30	100.00'	134.33°	21.88'	N 1°13'51" E	64.32'
C31	100.00'	134.33°	21.88'	N 1°13'51" E	64.32'
C32	100.00'	134.33°	21.88'	N 1°13'51" E	64.32'
C33	100.00'	134.33°	21.88'	N 1°13'51" E	64.32'
C34	100.00'	134.33°	21.88'	N 1°13'51" E	64.32'
C35	100.00'	134.33°	21.88'	N 1°13'51" E	64.32'
C36	100.00'	134.33°	21.88'	N 1°13'51" E	64.32'
C37	100.00'	134.33°	21.88'	N 1°13'51" E	64.32'
C38	100.00'	134.33°	21.88'	N 1°13'51" E	64.32'
C39	100.00'	134.33°	21.88'	N 1°13'51" E	64.32'
C40	100.00'	134.33°	21.88'	N 1°13'51" E	64.32'
C41	100.00'	134.33°	21.88'	N 1°13'51" E	64.32'
C42	100.00'	134.33°	21.88'	N 1°13'51" E	64.32'
C43	100.00'	134.33°	21.88'	N 1°13'51" E	64.32'
C44	100.00'	134.33°	21.88'	N 1°13'51" E	64.32'
C45	100.00'	134.33°	21.88'	N 1°13'51" E	64.32'
C46	100.00'	134.33°	21.88'	N 1°13'51" E	64.32'
C47	100.00'	134.33°	21.88'	N 1°13'51" E	64.32'
C48	100.00'	134.33°	21.88'	N 1°13'51" E	64.32'
C49	100.00'	134.33°	21.88'	N 1°13'51" E	64.32'
C50	100.00'	134.33°	21.88'	N 1°13'51" E	64.32'
C51	100.00'	134.33°	21.88'	N 1°13'51" E	64.32'
C52	100.00'	134.33°	21.88'	N 1°13'51" E	64.32'
C53	100.00'	134.33°	21.88'	N 1°13'51" E	64.32'
C54	100.00'	134.33°	21.88'	N 1°13'51" E	64.32'
C55	100.00'	134.33°	21.88'	N 1°13'51" E	64.32'
C56	100.00'	134.33°	21.88'	N 1°13'51" E	64.32'
C57	100.00'	134.33°	21.88'	N 1°13'51" E	64.32'
C58	100.00'	134.33°	21.88'	N 1°13'51" E	64.32'
C59	100.00'	134.33°	21.88'	N 1°13'51" E	64.32'
C60	100.00'	134.33°	21.88'	N 1°13'51" E	64.32'
C61	100.00'	134.33°	21.88'	N 1°13'51" E	64.32'
C62	100.00'	134.33°	21.88'	N 1°13'51" E	64.32'
C63	100.00'	134.33°	21.88'	N 1°13'51" E	64.32'
C64	100.00'	134.33°	21.88'	N 1°13'51" E	64.32'
C65	100.00'	134.33°	21.88'	N 1°13'51" E	64.32'
C66	100.00'	134.33°	21.88'	N 1°13'51" E	64.32'
C67	100.00'	134.33°	21.88'	N 1°13'51" E	64.32'
C68	100.00'	134.33°	21.88'	N 1°13'51" E	64.32'
C69	100.00'	134.33°	21.88'	N 1°13'51" E	64.32'
C70	100.00'	134.33°	21.88'	N 1°13'51" E	64.32'
C71	100.00'	134.33°	21.88'	N 1°13'51" E	64.32'
C72	100.00'	134.33°	21.88'	N 1°13'51" E	64.32'
C73	100.00'	134.33°	21.88'	N 1°13'51" E	64.32'
C74	100.00'	134.33°	21.88'	N 1°13'51" E	64.32'
C75	100.00'	134.33°	21.88'	N 1°13'51" E	64.32'
C76	100.00'	134.33°	21.88'	N 1°13'51" E	64.32'
C77	100.00'	134.33°	21.88'	N 1°13'51" E	64.32'
C78	100.00'	134.33°	21.88'	N 1°13'51" E	64.32'
C79	100.00'	134.33°	21.88'	N 1°13'51" E	64.32'
C80	100.00'	134.33°	21.88'	N 1°13'51" E	64.32'
C81	100.00'	134.33°	21.88'	N 1°13'51" E	64.32'
C82	100.00'	134.33°	21.88'	N 1°13'51" E	64.32'
C83	100.00'	134.33°	21.88'	N 1°13'51" E	64.32'
C84	100.00'	134.33°	21.88'	N 1°13'51" E	64.32'
C85	100.00'	134.33°	21.88'	N 1°13'51" E	64.32'
C86	100.00'	134.33°	21.88'	N 1°13'51" E	64.32'
C87	100.00'	134.33°	21.88'	N 1°13'51" E	64.32'
C88	100.00'	134.33°	21.88'	N 1°13'51" E	64.32'
C89	100.00'	134.33°	21.88'	N 1°13'51" E	64.32'
C90	100.00'	134.33°	21.88'	N 1°13'51" E	64.32'
C91	100.00'	134.33°	21.88'	N 1°13'51" E	64.32'
C92	100.00'	134.33°	21.88'	N 1°13'51" E	64.32'
C93	100.00'	134.33°	21.88'	N 1°13'51" E	64.32'
C94	100.00'	134.33°	21.88'	N 1°13'51" E	64.32'
C95	100.00'	134.33°	21.88'	N 1°13'51" E	64.32'
C96	100.00'	134.33°	21.88'	N 1°13'51" E	64.32'
C97	100.00'	134.33°	21.88'	N 1°13'51" E	64.32'
C98	100.00'	134.33°	21.88'	N 1°13'51" E	64.32'
C99	100.00'	134.33°	21.88'	N 1°13'51" E	64.32'
C100	100.00'	134.33°	21.88'	N 1°13'51" E	64.32'

LINE	LENGTH	BEARING	LENGTH	BEARING
L1	11.41'	S 11°29'57" W	L90	34.84'
L2	24.12'	S 88°29'07" E	L91	29.42'
L3	22.81'	S 46°28'51" E	L92	54.90'
L4	24.12'	S 46°28'51" E	L93	54.90'
L5	24.12'	S 46°28'51" E	L94	54.90'
L6	24.12'	S 46°28'51" E	L95	54.90'
L7	24.12'	S 46°28'51" E	L96	54.90'
L8	24.12'	S 46°28'51" E	L97	54.90'
L9	24.12'	S 46°28'51" E	L98	54.90'
L10	24.12'	S 46°28'51" E	L99	54.90'
L11	24.12'	S 46°28'51" E	L100	54.90'
L12	24.12'	S 46°28'51" E	L101	54.90'
L13	24.12'	S 46°28'51" E	L102	54.90'
L14	24.12'	S 46°28'51" E	L103	54.90'
L15	24.12'	S 46°28'51" E	L104	54.90'
L16	24.12'	S 46°28'51" E	L105	54.90'
L17	24.12'	S 46°28'51" E	L106	54.90'
L18	24.12'	S 46°28'51" E	L107	54.90'
L19	24.12'	S 46°28'51" E	L108	54.90'
L20	24.12'	S 46°28'51" E	L109	54.90'
L21	24.12'	S 46°28'51" E	L110	54.90'
L22	24.12'	S 46°28'51" E	L111	54.90'
L23	24.12'	S 46°28'51" E	L112	54.90'
L24	24.12'	S 46°28'51" E	L113	54.90'
L25	24.12'	S 46°28'51" E	L114	54.90'
L26	24.12'	S 46°28'51" E	L115	54.90'
L27	24.12'	S 46°28'51" E	L116	54.90'
L28	24.12'	S 46°28'51" E	L117	54.90'
L29	24.12'	S 46°28'51" E	L118	54.90'
L30	24.12'	S 46°28'51" E	L119	54.90'
L31	24.12'	S 46°28'51" E	L120	54.90'
L32	24.12'	S 46°28'51" E	L121	54.90'
L33	24.12'	S 46°28'51" E	L122	54.90'
L34	24.12'	S 46°28'51" E	L123	54.90'
L35	24.12'	S 46°28'51" E	L124	54.90'
L36	24.12'	S 46°28'51" E	L125	54.90'
L37	24.12'	S 46°28'51" E	L126	54.90'
L38	24.12'	S 46°28'51" E	L127	54.90'
L39	24.12'	S 46°28'51" E	L128	54.90'
L40	24.12'	S 46°28'51" E	L129	54.90'
L41	24.12'	S 46°28'51" E	L130	54.90'
L42	24.12'	S 46°28'51" E	L131	54.90'
L43	24.12'	S 46°28'51" E	L132	54.90'
L44	24.12'	S 46°28'51" E	L133	54.90'
L45	24.12'	S 46°28'51" E	L134	54.90'
L46	24.12'	S 46°28'51" E	L135	54.90'
L47	24.12'	S 46°28'51" E	L136	54.90'
L48	24.12'	S 46°28'51" E	L137	54.90'
L49	24.12'	S 46°28'51" E	L138	54.90'
L50	24.12'	S 46°28'51" E	L139	54.90'
L51	24.12'	S 46°28'51" E	L140	54.90'
L52	24.12'	S 46°28'51" E	L141	54.90'
L53	24.12'	S 46°28'51" E	L142	54.90'
L54	24.12'	S 46°28'51" E	L143	54.90'
L55	24.12'	S 46°28'51" E	L144	54.90'
L56	24.12'	S 46°28'51" E	L145	54.90'
L57	24.12'	S 46°28'51" E	L146	54.90'
L58	24.12'	S 46°28'51" E	L147	54.90'
L59	24.12'	S 46°28'51" E	L148	54.90'
L60	24.12'	S 46°28'51" E	L149	54.90'
L61	24.12'	S 46°28'51" E	L150	54.90'
L62	24.12'	S 46°28'51" E	L151	54.90'
L63	24.12'	S 46°28'51" E	L152	54.90'
L64	24.12'	S 46°28'51" E	L153	54.90'
L65	24.12'	S 46°28'51" E	L154	54.90'
L66	24.12'	S 46°28'51" E	L155	54.90'
L67	24.12'	S 46°28'51" E	L156	54.90'
L68	24.12'	S 46°28'51" E	L157	54.90'
L69	24.12'	S 46°28'51" E	L158	54.90'
L70	24.12'	S 46°28'51" E	L159	54.90'
L71	24.12'	S 46°28'51" E	L160	54.90'
L72	24.12'	S 46°28'51" E	L161	54.90'
L73	24.12'	S 46°28'51" E	L162	54.90'
L74	24.12'	S 46°28'51" E	L163	54.90'
L75	24.12'	S 46°28'51" E	L164	54.90'
L76	24.12'	S 46°28'51" E	L165	54.90'
L77	24.12'	S 46°28'51" E	L166	54.90'
L78	24.12'	S 46°28'51" E	L167	54.90'
L79	24.12'	S 46°28'51" E	L168	54.90'
L80	24.12'	S 46°28'51" E	L169	54.