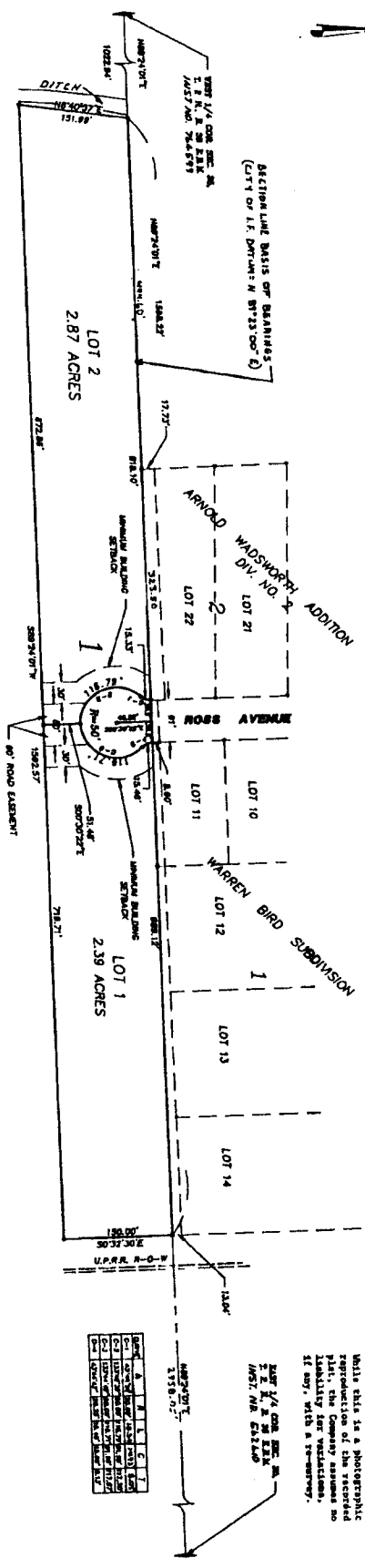




TOM BIRD ADDITION

DIVISION NO. 1

TO THE
CITY OF AMMON, BONNEVILLE COUNTY, IDAHO
 PART OF THE NORTH 1/2 OF THE SW 1/4 OF SEC. 34, T. 2 N., R. 28 E. 111



First American Tile Company
 Idaho Falls, Idaho 83404
 This sketch is made solely for the purpose of assisting in locating the premises. The company assumes no liability for alleged loss or damage which may result from reliance on this map.



NOTES

- open circle indicates a 1/2"x24" iron rod placed with a yellow plastic cap marked L.S. 722
- closed circle indicates a iron rod found.
- utility easements are 8' through each lot unless otherwise shown.
- a 10' wide utility easement is reserved along the street side of all lots.

First American Tile Company
 Idaho Falls, Idaho 83404
 This plat is a photographic reproduction of the recorded plat; the Company assumes no liability for variations, if any, with a re-survey.