

# TOWNSHIP PARK ESTATES

BONNEVILLE COUNTY, IDAHO  
PART OF THE N.W. 1/4, SEC. 6, T. 1 N., R. 38 E.B.M.

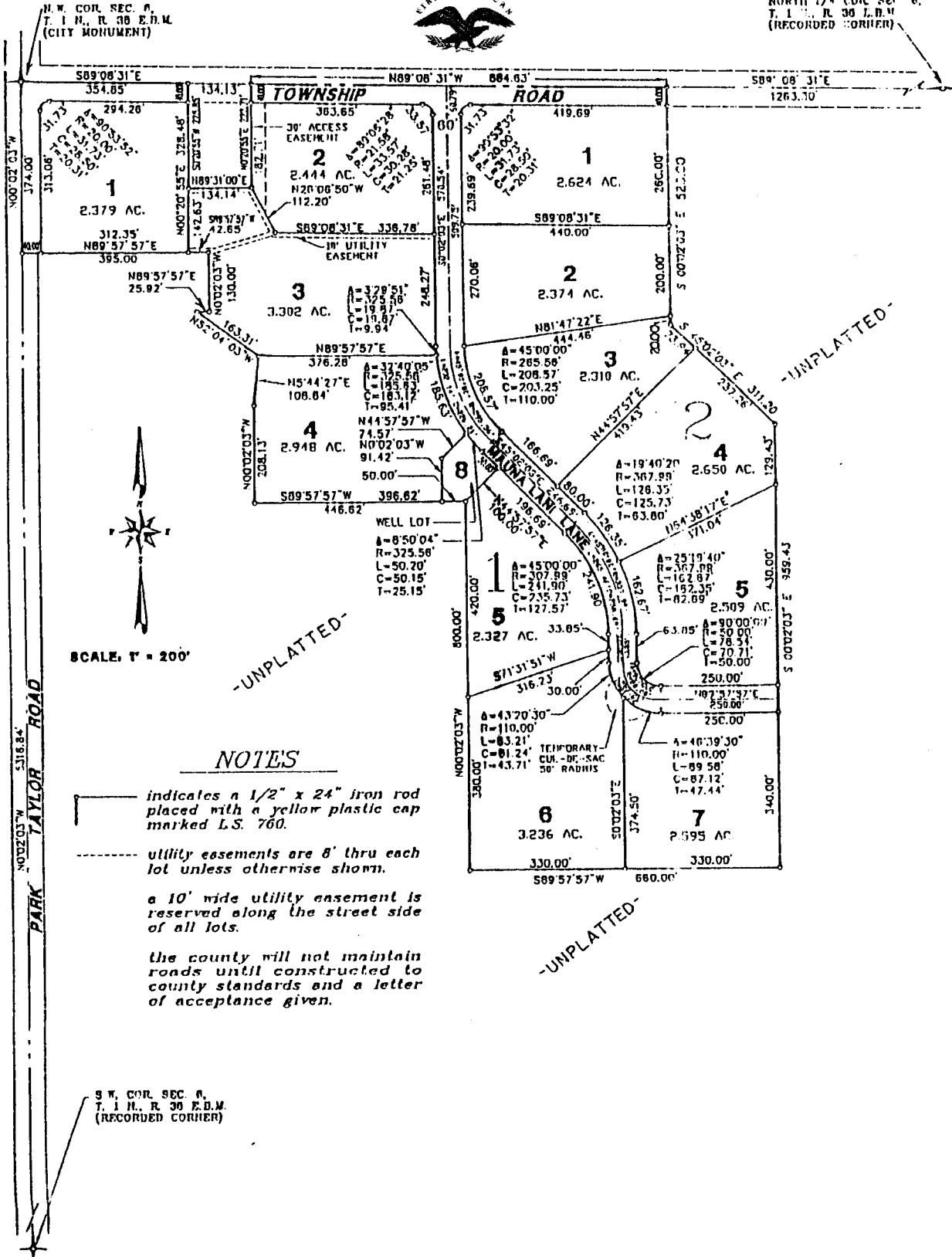
First American Title Company

Idaho Falls, Idaho 83404

This sketch is made solely for the purpose of assisting in locating the premises. The company assumes no liability for alleged loss or damage which may result from reliance on this map.



NORTH 1/4 COR. SEC. 6,  
T. 1 N., R. 38 E.B.M.  
(RECORDED CORNER)



SCALE: 1" = 200'

### NOTES

- indicates a 1/2" x 24" iron rod placed with a yellow plastic cap marked L.S. 760.
- - - utility easements are 8' thru each lot unless otherwise shown.
- a 10' wide utility easement is reserved along the street side of all lots.
- the county will not maintain roads until constructed to county standards and a letter of acceptance given.

S.W. COR. SEC. 6,  
T. 1 N., R. 38 E.B.M.  
(RECORDED CORNER)