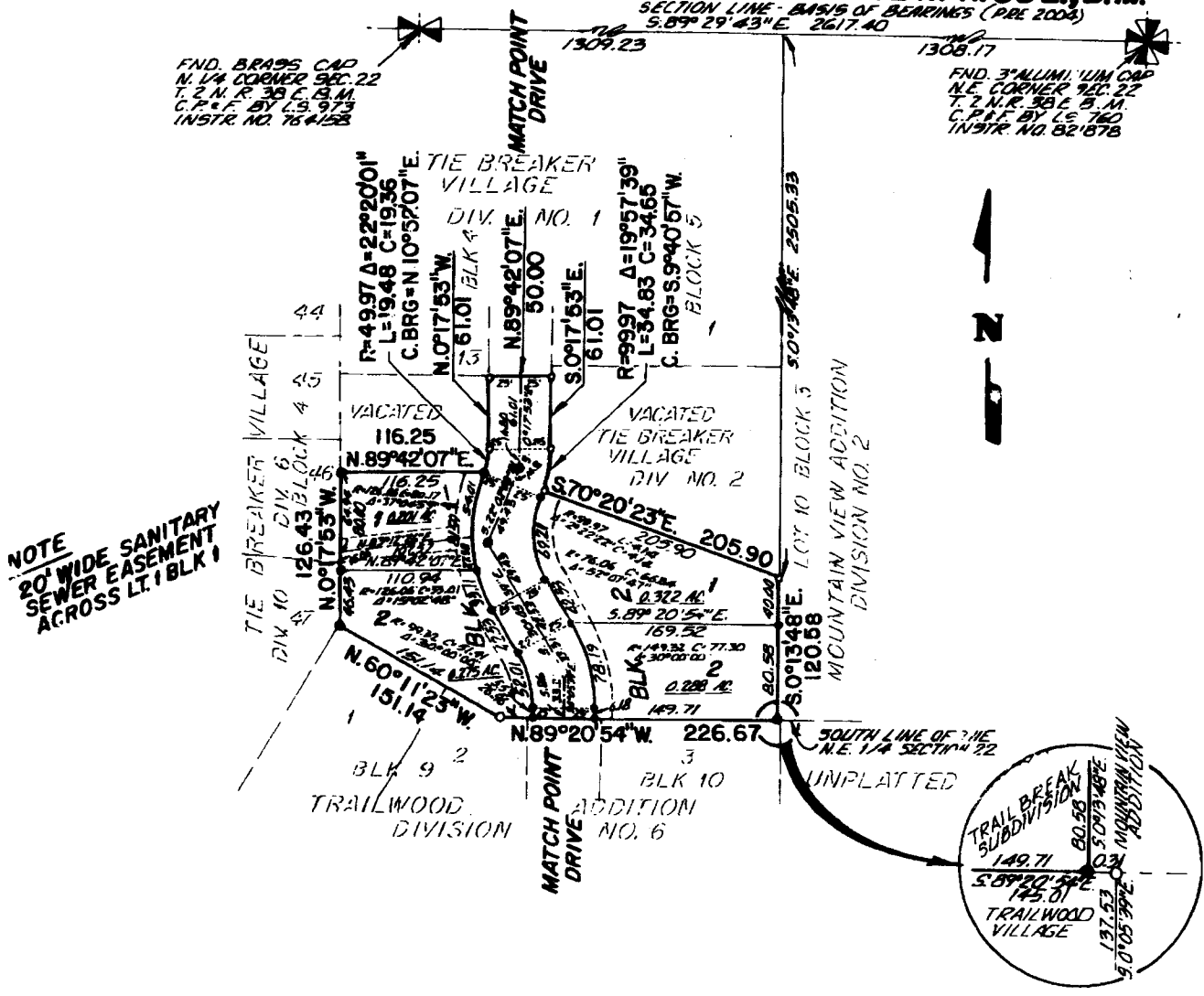


TRAIL BREAK SUBDIVISION DIVISION NO. 1

AN ADDITION TO THE CITY OF AMMON, BONNEVILLE COUNTY, IDAHO

BEING PART OF THE N.E. 1/4 OF SECTION 22 T.2 N. R. 38 E., B.M.



NOTE
20' WIDE SANITARY
SEWER EASEMENT
ACROSS LT. 1 BLK 1

First American Title Company
Idaho Falls, Idaho 83404
While this is a photographic reproduction of the recorded plat, the Company assumes no liability for variations, if any, with a re-survey.

LEGEND & NOTES

- 5/8" x 30" Steel rebar set with plastic cap stamped L.S. 8795
- 1/2" x 24" Steel rebar set with plastic cap stamped L.S. 8795
- 5/8" Steel rebar found with plastic caps stamped L.S. 722
- 1/2" Steel rebar found with plastic caps stamped L.S. 827

--- A fifteen foot wide Public Utility Easement is hereby reserved along all road frontages within each lot. All other public utility easement widths are as shown.

This plat consists of a part of Tie Breaker Village, Division No. 2 that was vacated by the City of Ammon under Ordinance No. 238, dated August 4, 1994.