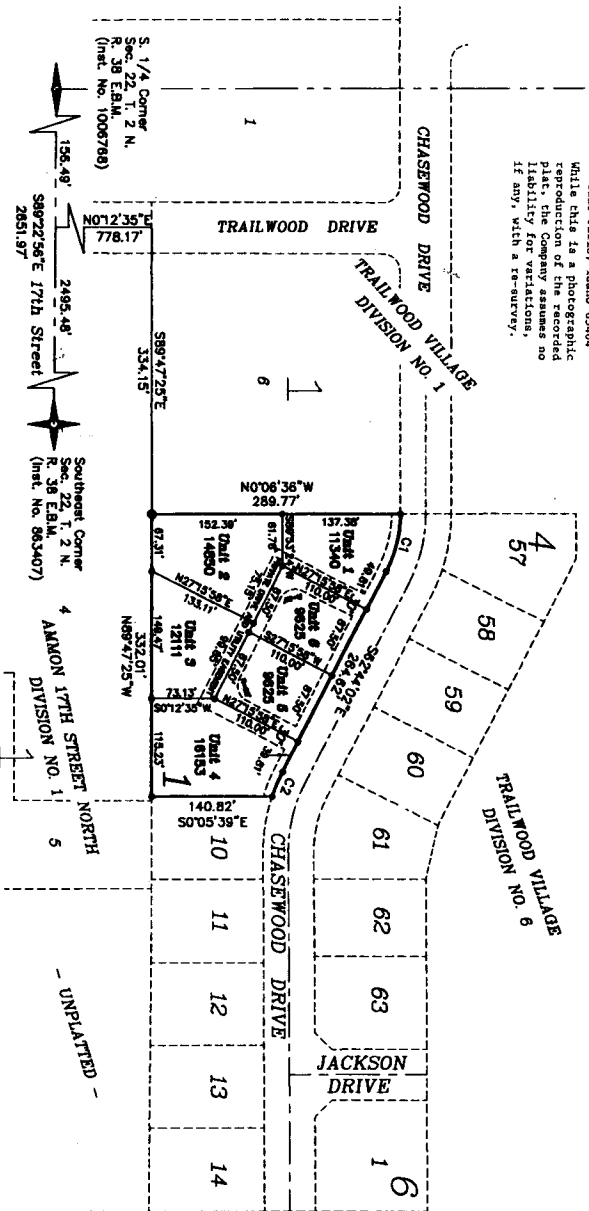


TRAILWOOD SHIRE

PURSUANT TO IDAHO CODE, TITLE 55, CHAPTER 15

LOCATED IN ALL OF LOTS 7, 8, AND 9, BLOCK 1, TRAILWOOD VILLAGE
 DIVISION NO. 4, CITY OF AMMON, BONNEVILLE COUNTY, IDAHO
 PART OF THE SW 1/4 OF THE SE 1/4 OF SEC. 22, T. 2 N., R. 38 E.B.M.

First American Title Company
 Idaho Falls, Idaho 83404
 While this is a photographic
 reproduction of the recorded
 plat, the Company assumes no
 liability for variations,
 if any, with a survey.



Base of Survey - City of Idaho Falls

CURVE TABLE

NAME	DELTA	LENGTH	RADIUS	BEARING	CHORD
C1	270°32'22"	70.83'	150.00'	N76°15'44"W	70.18'
C2	83°51'11"	31.47'	210.00'	S87°01'38"E	31.44'

NOTES

1. All lots shown on this plat are subject to the provisions of the Idaho Subdivision Map Act, Chapter 55, Idaho Code, and the rules and regulations of the State Engineer, Idaho Department of Water Resources, regarding subdivision maps.

2. The plat is subject to the provisions of the Idaho Subdivision Map Act, Chapter 55, Idaho Code, and the rules and regulations of the State Engineer, Idaho Department of Water Resources, regarding subdivision maps.

3. The plat is subject to the provisions of the Idaho Subdivision Map Act, Chapter 55, Idaho Code, and the rules and regulations of the State Engineer, Idaho Department of Water Resources, regarding subdivision maps.

4. The plat is subject to the provisions of the Idaho Subdivision Map Act, Chapter 55, Idaho Code, and the rules and regulations of the State Engineer, Idaho Department of Water Resources, regarding subdivision maps.

5. The plat is subject to the provisions of the Idaho Subdivision Map Act, Chapter 55, Idaho Code, and the rules and regulations of the State Engineer, Idaho Department of Water Resources, regarding subdivision maps.

6. The plat is subject to the provisions of the Idaho Subdivision Map Act, Chapter 55, Idaho Code, and the rules and regulations of the State Engineer, Idaho Department of Water Resources, regarding subdivision maps.

7. The plat is subject to the provisions of the Idaho Subdivision Map Act, Chapter 55, Idaho Code, and the rules and regulations of the State Engineer, Idaho Department of Water Resources, regarding subdivision maps.

8. The plat is subject to the provisions of the Idaho Subdivision Map Act, Chapter 55, Idaho Code, and the rules and regulations of the State Engineer, Idaho Department of Water Resources, regarding subdivision maps.

9. The plat is subject to the provisions of the Idaho Subdivision Map Act, Chapter 55, Idaho Code, and the rules and regulations of the State Engineer, Idaho Department of Water Resources, regarding subdivision maps.

10. The plat is subject to the provisions of the Idaho Subdivision Map Act, Chapter 55, Idaho Code, and the rules and regulations of the State Engineer, Idaho Department of Water Resources, regarding subdivision maps.

