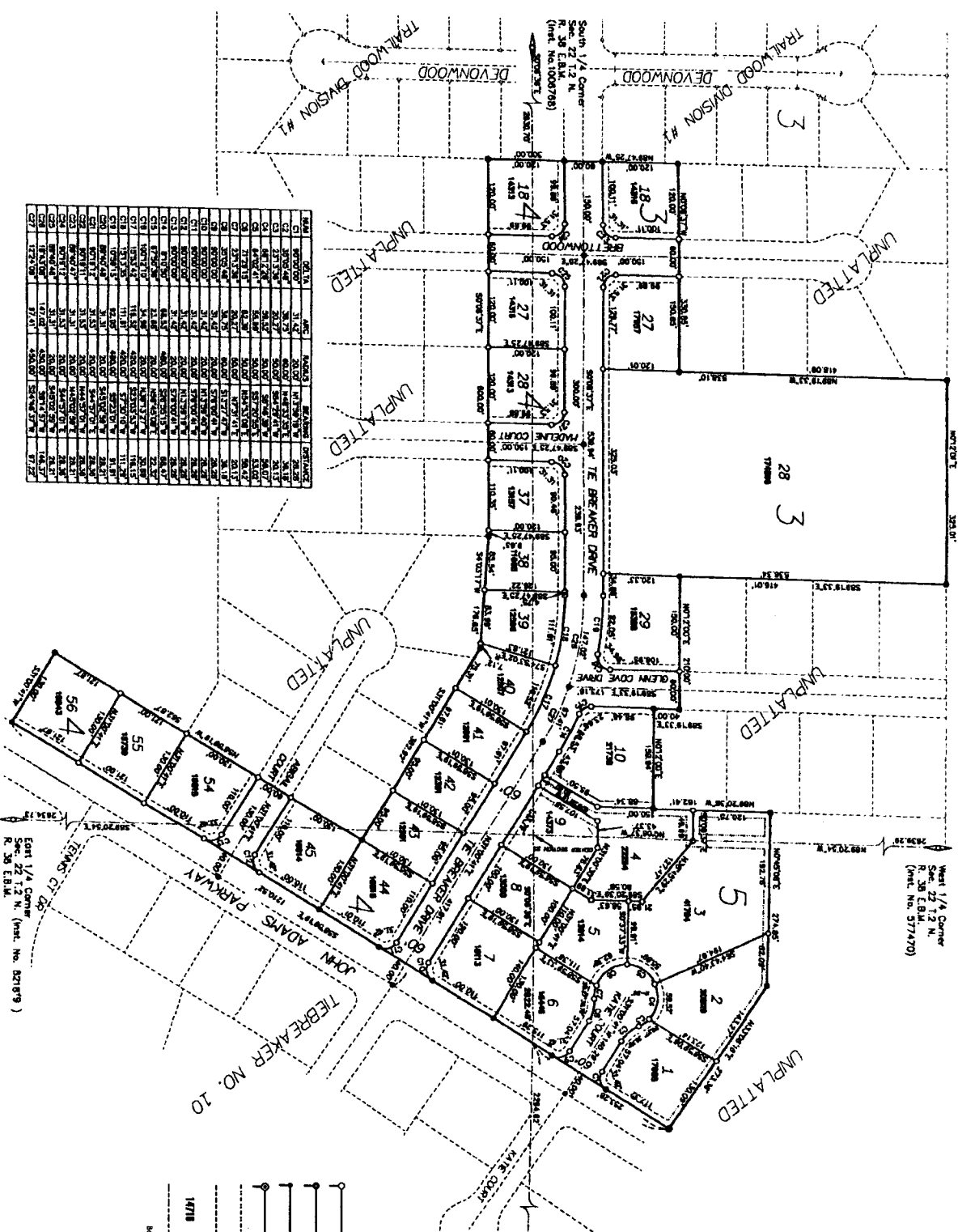


**First American Title Company**  
 Idaho Falls, Idaho 83404  
 This sketch is made solely for the purpose of assisting in locating the premises. The company assumes no liability for alleged loss or damage which may result from reliance on this map.



# TRAIL WOOD VILLAGE

**DIVISION NO. 2**  
 CITY OF AMMON, BONNEVILLE COUNTY, IDAHO  
 PART OF SECTION 22 T. 2 N., R. 38 E.B.M.



BLK	LOT	ACRES	AREA	PERCENT	CONTRACT
1	1	0.10	4356	100.00	
1	2	0.10	4356	100.00	
1	3	0.10	4356	100.00	
1	4	0.10	4356	100.00	
1	5	0.10	4356	100.00	
1	6	0.10	4356	100.00	
1	7	0.10	4356	100.00	
1	8	0.10	4356	100.00	
1	9	0.10	4356	100.00	
1	10	0.10	4356	100.00	
1	11	0.10	4356	100.00	
1	12	0.10	4356	100.00	
1	13	0.10	4356	100.00	
1	14	0.10	4356	100.00	
1	15	0.10	4356	100.00	
1	16	0.10	4356	100.00	
1	17	0.10	4356	100.00	
1	18	0.10	4356	100.00	
1	19	0.10	4356	100.00	
1	20	0.10	4356	100.00	
1	21	0.10	4356	100.00	
1	22	0.10	4356	100.00	
1	23	0.10	4356	100.00	
1	24	0.10	4356	100.00	
1	25	0.10	4356	100.00	
1	26	0.10	4356	100.00	
1	27	0.10	4356	100.00	
1	28	0.10	4356	100.00	
1	29	0.10	4356	100.00	
1	30	0.10	4356	100.00	
1	31	0.10	4356	100.00	
1	32	0.10	4356	100.00	
1	33	0.10	4356	100.00	
1	34	0.10	4356	100.00	
1	35	0.10	4356	100.00	
1	36	0.10	4356	100.00	
1	37	0.10	4356	100.00	
1	38	0.10	4356	100.00	
1	39	0.10	4356	100.00	
1	40	0.10	4356	100.00	
1	41	0.10	4356	100.00	
1	42	0.10	4356	100.00	
1	43	0.10	4356	100.00	
1	44	0.10	4356	100.00	
1	45	0.10	4356	100.00	
1	46	0.10	4356	100.00	
1	47	0.10	4356	100.00	
1	48	0.10	4356	100.00	
1	49	0.10	4356	100.00	
1	50	0.10	4356	100.00	
1	51	0.10	4356	100.00	
1	52	0.10	4356	100.00	
1	53	0.10	4356	100.00	
1	54	0.10	4356	100.00	
1	55	0.10	4356	100.00	
1	56	0.10	4356	100.00	



**NOTES**

- Indicates a 1/2" x 24" iron rod placed with 5' below finished, cap marked U.S. 722.
  - Indicates a 1/2" x 24" iron rod found with 5' below finished, cap marked U.S. 722.
  - Indicates a 3/4" x 30" iron rod placed with 5' below finished, cap marked U.S. 722.
  - Indicates a 3/4" x 30" iron rod found with 5' below finished, cap marked U.S. 722.
  - Utility and drainage equipment cap, 10" thru each rd unless otherwise shown.
  - A 10" wide utility easement is reserved along the street side of all lots.
- 14718  
 Indicates lot lines in square feet.  
 section line  
 Block of Section - The Breaker Village Div. No. 10

North 1/4 Corner  
 Sec. 22 T. 2 N.  
 R. 38 E.B.M.  
 (plat. No. 794158)

East 1/4 Corner  
 Sec. 22 T. 2 N.  
 R. 38 E.B.M.  
 (plat. No. 827879)